



PRODUCT CATALOG

SURFACE READY SHOWER & WET ROOM SYSTEMS





WHY KBRS?

THE KBRS ADVANTAGE

Today's residential and commercial builders are more health conscious than ever when it comes to making their bathrooms, and the products used to build them. When it comes to building the bathrooms, and showers, to meet their clients' growing needs, builders need access to the set products and a shower system that will not only look beautiful, but come with the guarantee of being 100% waterproof, leak-free, and cost effective.

- *Quick & Easy to Install*
- *Inhibits Mold & Mildew Growth*
- *100% Waterproof Shower Systems*
- *Zero Leaks - Guaranteed*
- *Any Shape, Any Size, Any Drain Location*

KBRS makes your job easier so you can make their bathroom healthier.

- *Unmatched Products*
- *Saves Builders Time & Money*
- *Quick Turn Around*
- *Responsive Customer Service*
- *Personalized Service from our Experts in the Field*

We welcome the opportunity to work with you. Please be assured that our very best efforts will always be extended upon your behalf.





"No two projects are the same. KBRS gives us the opportunity to customize each shower to fit the needs of each homeowner day in and day out regardless the shape or size."

- Steller Construction

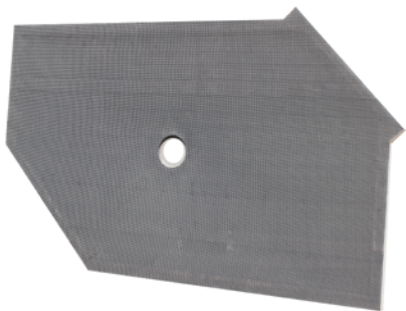


SHOWER PANS

ANY SHAPE • ANY SIZE • ANY DRAIN LOCATION

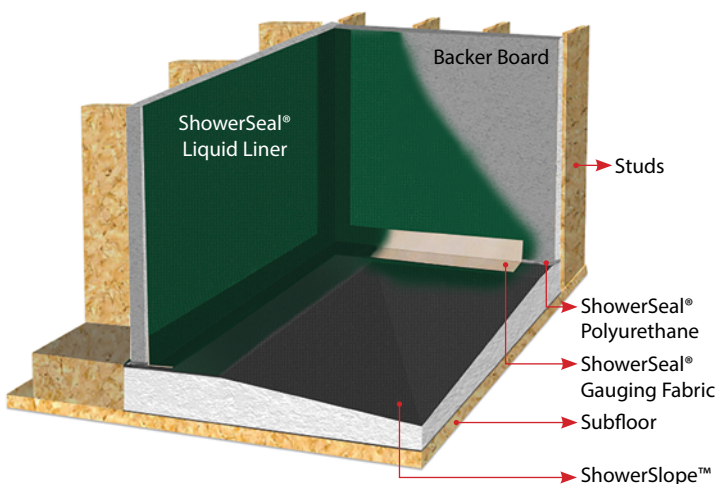
SHOWERSLOPE™

CUT-TO-FIT ON SITE



ELIMINATE PONDING WATER

The ShowerSlope™ is a tileable wet area substrate that provides the required positive floor drainage in a tile shower assembly that will be utilizing a clamping-collar type shower drain. The ShowerSlope™ has a unique drain connection design that can be specified to work with either a large commercial or standard residential shower drain. Once installed, the ShowerSlope™ can be waterproofed using any ANSI 118.10 liquid waterproofing. The ShowerSlope™ is lightweight, yet will provide the superior strength and durability necessary for a successful tile shower installation. The ShowerSlope™ is easily installed using modified thin-set mortar. The ShowerSlope™ is available in standard and custom sizes.



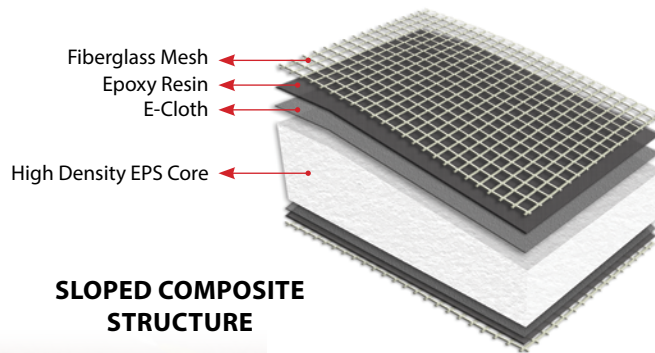
Follow manufacturer instructions when installing waterproof membrane (ANSI 118.10)

ADJUSTABLE ON SITE

The ShowerSlope™ is a one piece factory sloped component of a shower system that eliminates the chances of water ponding on the tile assembly. The ShowerSlope™ can be cut-to-fit in the field if required. Each panel is lightweight yet durable enough to resist damage caused by normal construction activity. The ShowerSlope™ is quick and easy to install using standard modified thin-set. The ShowerSlope™ substantially reduces the time and skill level required to build a code compliant tile shower pan. The non-porous epoxy skins provide a durable layer of protection for the waterproofing membrane and tile assembly. The ShowerSlope™ is dimensionally stable and isolates the tile from differential movement stresses within the sub-floor.

- *Quick & Easy to Install*
- *Can be Cut-to-Fit in the Field*
- *Can be manufactured to Any Drain*
- *One Piece 1/4" Factory Sloped to the Drain*
- *Any Shape, Any Size, Any Drain Location*
- *Apply Any ANSI 118.10 Liquid Waterproofing*

SHOWERSLOPE™ TECHNOLOGY

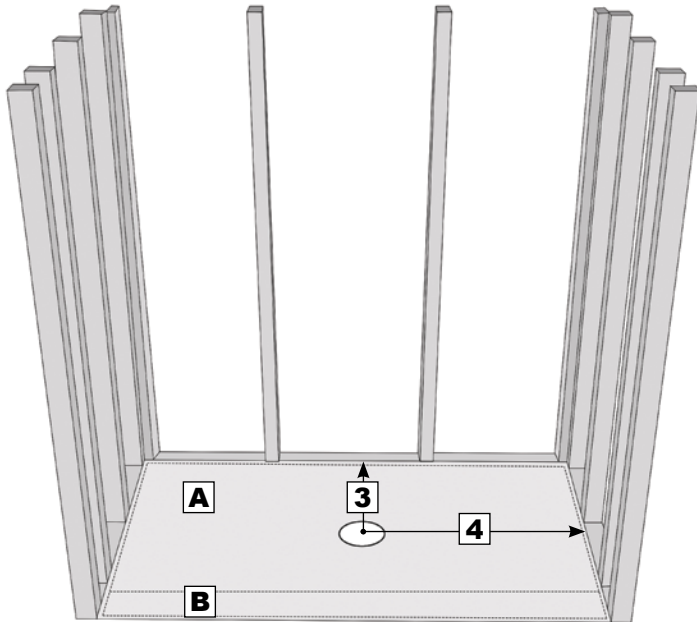
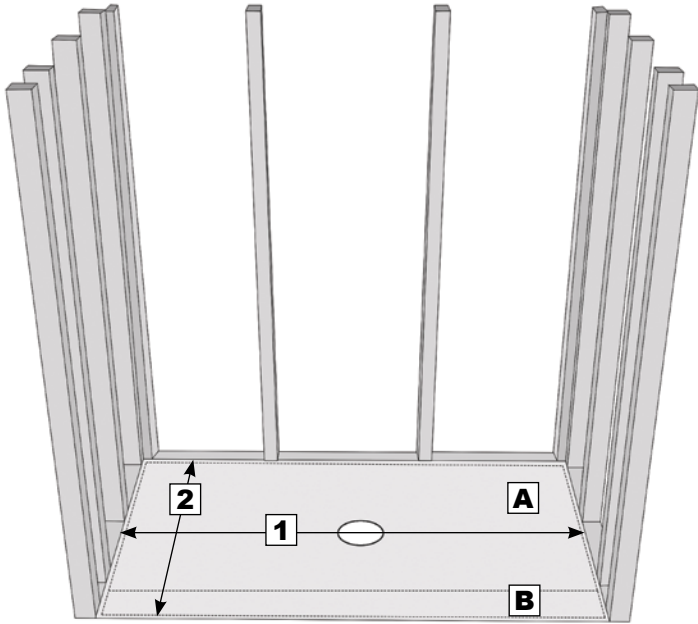


SLOPED COMPOSITE STRUCTURE



³Minimum drain location restrictions and/or exceptions may apply.

HOW TO MEASURE FOR YOUR SHOWERSLOPE™

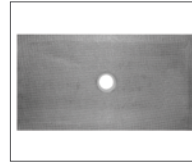


- 1.) Measure the width from stud wall to stud wall
- 2.) Measure the depth from the front of the finished curb to the back stud wall - subtract 4" for HardCurb®
- 3.) Measure the drain center from 1 stud wall to the center of the drain
- 4.) Measure the drain center from a perpendicular stud wall

- A.) Future shower basin area
B.) Future curb area

STANDARD SHOWERSLOPE™ SIZES

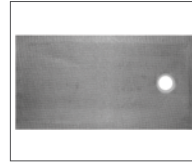
2" CORE WITH POINT DRAIN RECESS



Showerslope™ 30" x 55"

Center Drain
Core Height: 2"

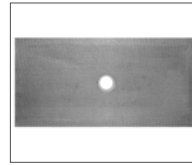
Item #: SS-3055-T2-C



Showerslope™ 30" x 55"

Left or Right Drain
Core Height: 2"

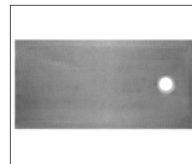
Item #: SS-3055-T1-LR



Showerslope™ 30" x 61"

Center Drain
Core Height: 2"

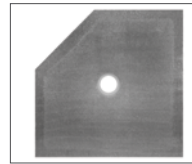
Item #: SS-3061-T2-C



Showerslope™ 30" x 61"

Left or Right Drain
Core Height: 2"

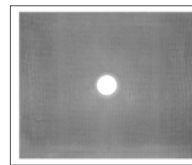
Item #: SS-3061-T2-LR



Showerslope™ 33" x 33"

Neo Angle Drain
Core Height: 2"

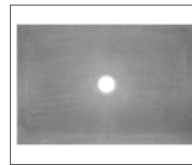
Item #: SS-3333-T2-N



Showerslope™ 33" x 37"

Center Drain
Core Height: 2"

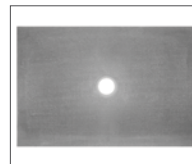
Item #: SS-3337-T2-C



Showerslope™ 33" x 43"

Center T-1 Drain Recess
Core Height: 2"

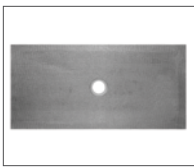
Item #: SS-3343-T2-C



Showerslope™ 33" x 49"

Center Drain
Core Height: 2"

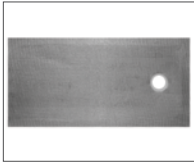
Item #: SS-3349-T2-C



ShowerSlope™ 33" x 61"

Center Drain
Core Height: 2"

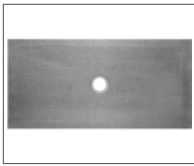
Item #: SS-3361-T2-C



ShowerSlope™ 33" x 61"

Left or Right Drain
Core Height: 2"

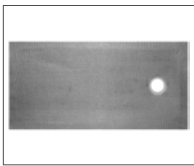
Item #: SS-3361-T2-LR



ShowerSlope™ 36" x 61"

Center Drain
Core Height: 2"

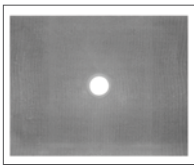
Item #: SS-3661-T2-C



ShowerSlope™ 36" x 61"

Left or Right Drain
Core Height: 2"

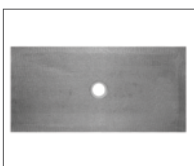
Item #: SS-3661-T2-LR



ShowerSlope™ 37" x 37"

Center Drain
Core Height: 2"

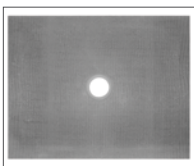
Item #: SS-3737-T2-C



ShowerSlope™ 38" x 61"

Center Drain
Core Height: 2"

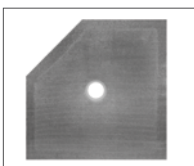
Item #: SS-3861-T2-C



ShowerSlope™ 39" x 39"

Center Drain
Core Height: 2"

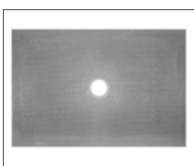
Item #: SS-3939-T2-C



ShowerSlope™ 39" x 39"

Neo Angle Drain
Core Height: 2"

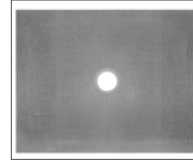
Item #: SS-3939-T2-N



ShowerSlope™ 39" x 43"

Center Drain
Core Height: 2"

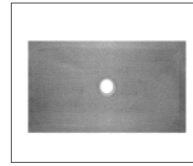
Item #: SS-3943-T2-C



ShowerSlope™ 39" x 49"

Center Drain
Core Height: 2"

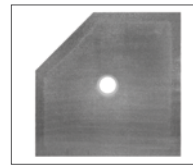
Item #: SS-3949-T2-C



ShowerSlope™ 44" x 61"

Center Drain
Core Height: 2"

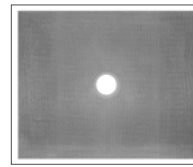
Item #: SS-4461-T2-C



ShowerSlope™ 45" x 45"

Neo Angle Drain
Core Height: 2"

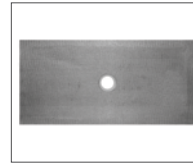
Item #: SS-4545-T2-N



ShowerSlope™ 45" x 49"

Center Drain
Core Height: 2"

Item #: SS-4549-T2-C



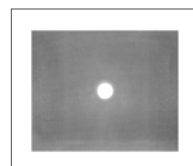
ShowerSlope™ 48" x 72"

Center Drain
Core Height: 2"

Item #: SS-4872-T2-C

LOW PROFILE SHOWERSLOPE™ SIZES

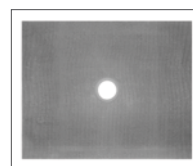
1" CORE WITH POINT DRAIN RECESS



ShowerSlope™ 37" x 37"

Center Drain
Core Height: 1"

Item #: SSLP-3737-C



ShowerSlope™ 39" x 39"

Left or Right Drain
Core Height: 1"

Item #: SSLP-3939-LR

LINEAR SHOWERSLOPE™ SIZES

2" CORE WITH LINEAR DRAIN RECESS



Linear ShowerSlope™ 36" x 72"

Left or Right Drain
24" Linear Drain Slot

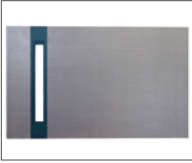
Item #: LSS-3672-LR



Linear ShowerSlope™ 38" x 72"

Left or Right
32" Linear Drain Slot

Item #: LSS-3872-LR



Linear ShowerSlope™ 42" x 72"

Left or Right Drain
36" Linear Drain Slot

Item #: LSS-4272-LR



Linear ShowerSlope™ 42" x 61"

Left or Right Drain
48" Linear Drain Slot

Item #: LSS-4261-FB

Custom Sizes

Order a Custom ShowerSlope™

**ANY SIZE, ANY SHAPE
& ANY DRAIN LOCATION**



"I've been in the remodeling business for 28 years. During those years I've done everything from mud-bed, pre-cast, and pre-formed shower bases from (other companies), and recently, KBRs. Your product is by far my favorite.

- John Kremer Carpentry and Remodeling, Inc.



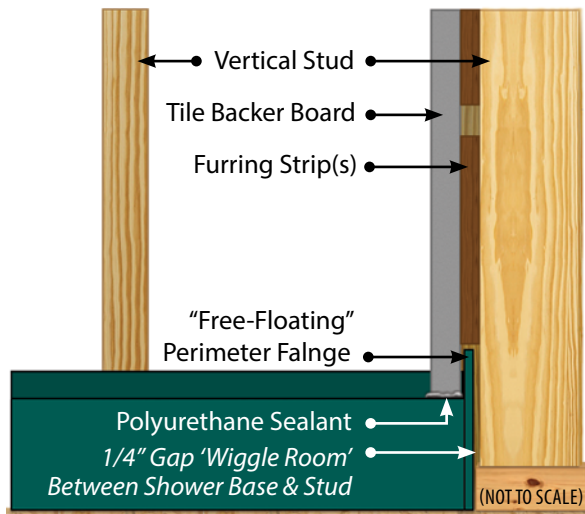
TILE-BASIN®

FACTORY WATERPROOFED



GUARANTEED SHOWER LEAK PROTECTION

The Tile-Basin® is a surface ready wet area substrate that provides the required positive floor drainage in a tile shower assembly that will be utilizing a clamping-collar type shower drain. The Tile-Basin® has a unique drain connection design that can be specified to work with either a large commercial or standard residential shower drain. The Tile-Basin® is factory waterproofed and equipped with a perimeter flange/curb combination of your choice. The Tile-Basin® is lightweight, yet will provide the superior strength and durability necessary for a successful tile shower installation. The Tile-Basin® is easily installed using modified thin-set mortar. The Tile-Basin® is available in standard sizes and custom with your choice of drain connection location.



No Additional Flashing Required

READY TO TILE CUSTOM SOLUTIONS

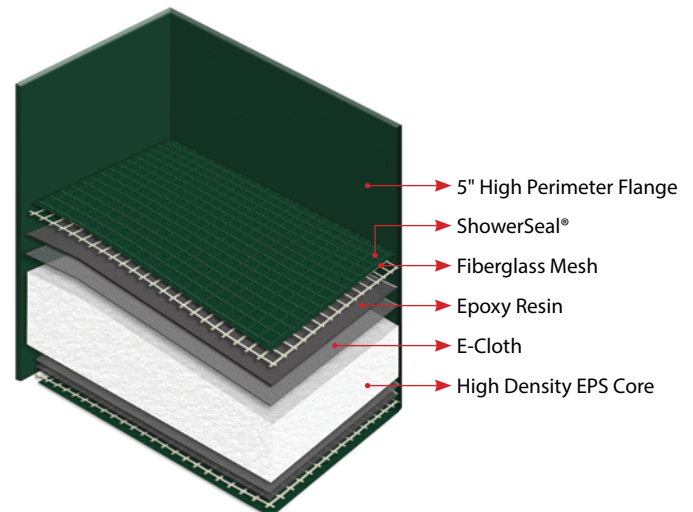
The Tile-Basin® is a one-piece factory sloped component of a shower system that eliminates the chances of water ponding on the tile assembly. The Tile-Basin® has a perimeter water barrier and a fixed curb, that establishes additional protection against water leaving the basin area.

The Tile-Basin® is factory waterproofed and pitched at a 1/4" per foot. No additional waterproofing is required. The Tile-Basin® is lightweight yet durable enough to resist damage caused by normal construction activity. The Tile-Basin® is quick and easy to install using standard modified thin-set. The Tile-Basin® substantially reduces the time and skill level required to build a code compliant tile shower pan. The non-porous epoxy skins provide a durable layer of protection for the waterproofing membrane and tile assembly.

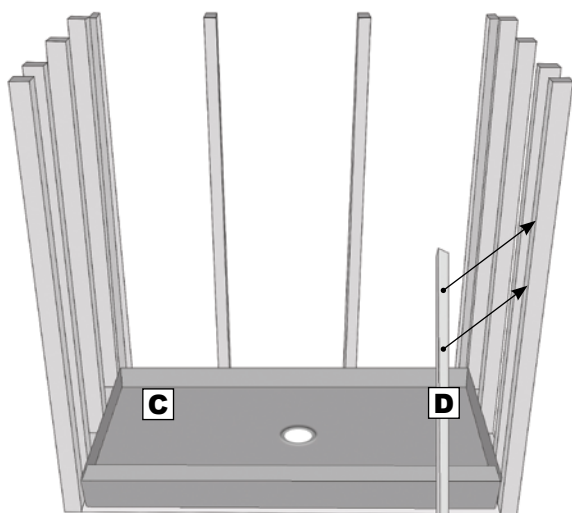
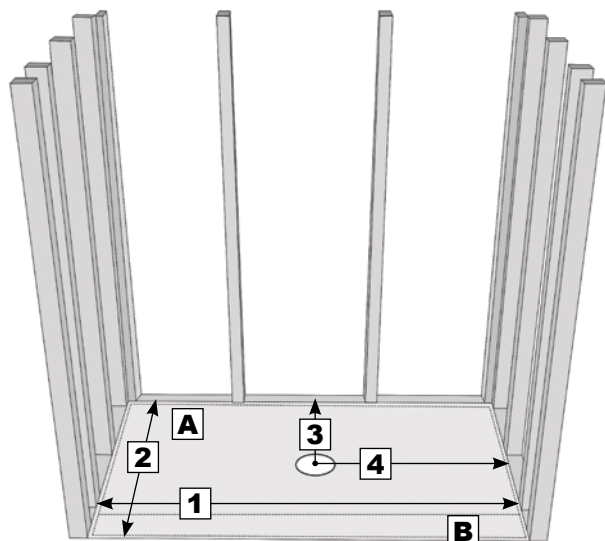
The Tile-Basin® is dimensionally stable and isolates the tile from differential movement stresses within the sub-floor. The Tile-Basin® is available in standard sizes and custom sizes with your choice of drain connection location.

- *Quick & Easy to Install*
- *Lightweight & Durable*
- *Can be manufactured to Any Drain*
- *Eliminates Chances of Ponding Water*
- *Any Shape, Any Size, Any Drain Location*
- *Has Perimeter Water Barrier & Fixed Curb*
- *One Piece 1/4" Factory Sloped to the Drain*
- *Install Base and Lay Any Size Tile with Modified Thin-set*

TILE-BASIN® TECHNOLOGY



HOW TO MEASURE FOR YOUR TILE-BASIN®



- 1.) Measure the width from stud wall to stud wall
- 2.) Measure the depth from the front of the finished curb to the back stud wall
- 3.) Measure the drain center from 1 stud wall to the center of the drain
- 4.) Measure the drain center from a perpendicular stud wall
- 5.) $(\text{Recorded Width}) - (1/2") = (\text{Tile-Basin}^\circ \text{ Width})$
 $(\text{Recorded Depth}) - (1/2") = (\text{Tile-Basin}^\circ \text{ Depth})$
 $(1\text{st Drain Center}) - (1/4") = (\text{Tile-Basin}^\circ 1^{\text{st}} \text{ Drain Center})$
 $(1\text{st Drain Center}) - (1/4") = (\text{Tile-Basin}^\circ 2^{\text{nd}} \text{ Drain Center})$

Explanation: The above calculations allow for a 1/4" gap between the stud walls and the outside of the Tile-Basin®. The "gap" makes installation easier (some "wiggle room"). Furring strips **(D)** attached to all vertical studs will be used to fill the 1/4" gap before your wallboard.

Enter the Above Calculations on the Order Form

A.) Future shower basin area | **B.)** Future curb area | **C.)** Tile-Basin® Shower Pan | **D.)** Furring Strips

STANDARD TILE-BASIN® SIZES FACTORY WATERPROOFED



Tile-Basin® 30" x 54"

Center Drain

Item # (Standard Curb): TB-3054-C
Item # (HardCurb®): TBXP-3054-C



Tile-Basin® 30" x 54"

Left Drain

Item # (Standard Curb): TB-3054-L
Item # (HardCurb®): TBXP-3054-L



Tile-Basin® 30" x 54"

Right Drain

Item # (Standard Curb): TB-3054-R
Item # (HardCurb®): TBXP-3054-R



Tile-Basin® 30" x 60"

Center Drain

Item # (Standard Curb): TB-3060-C
Item # (HardCurb®): TBXP-3060-C



Tile-Basin® 30" x 60"

Left Drain

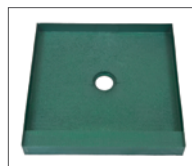
Item # (Standard Curb): TB-3060-L
Item # (HardCurb®): TBXP-3060-L



Tile-Basin® 30" x 60"

Right Drain

Item # (Standard Curb): TB-3060-R
Item # (HardCurb®): TBXP-3060-R



Tile-Basin® 32" x 32"

Center Drain

Item # (Standard Curb): TB-3232-C
Item # (HardCurb®): TBXP-3232-C



Tile-Basin® 32" x 48"

Center Drain

Item # (Standard Curb): TB-3248-C
Item # (HardCurb®): TBXP-3248-C



Tile-Basin® 32" x 60"

Center Drain

Item # (Standard Curb): TB-3260-C
Item # (HardCurb®): TBXP-3260-C



Tile-Basin® 32" x 60"

Left Drain

Item # (Standard Curb): TB-3260-L
Item # (HardCurb®): TBXP-3260-L



Tile-Basin® 32" x 60"

Right Drain

Item # (Standard Curb): TB-3260-R
Item # (HardCurb®): TBXP-3260-R



Tile-Basin® 34" x 48"

Center Drain

Item # (Standard Curb): TB-3448-C
Item # (HardCurb®): TBXP-3448-C



Tile-Basin® 34" x 60"

Center Drain

Item # (Standard Curb): TB-3460-C
Item # (HardCurb®): TBXP-3460-C



Tile-Basin® 34" x 60"

Left Drain

Item # (Standard Curb): TB-3460-L
Item # (HardCurb®): TBXP-3460-L



Tile-Basin® 34" x 60"

Right Drain

Item # (Standard Curb): TB-3460-R
Item # (HardCurb®): TBXP-3460-R



Tile-Basin® 36" x 36"

Center Drain

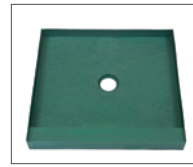
Item # (Standard Curb): TB-3636-C
Item # (HardCurb®): TBXP-3636-C



Tile-Basin® 36" x 36"

Neo Angle

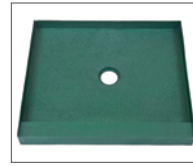
Item # (Standard Curb): TB-3636-N
Item # (HardCurb®): TBXP-3636-N



Tile-Basin® 36" x 42"

Center Drain

Item # (Standard Curb): TB-3642-C
Item # (HardCurb®): TBXP-3642-C



Tile-Basin® 36" x 48"

Center Drain

Item # (Standard Curb): TB-3648-C
Item # (HardCurb®): TBXP-3648-C



Tile-Basin® 36" x 60"

Center Drain

Item # (Standard Curb): TB-3660-C
Item # (HardCurb®): TBXP-3660-C



Tile-Basin® 36" x 60"

Left Drain

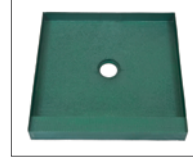
Item # (Standard Curb): TB-3660-L
Item # (HardCurb®): TBXP-3660-L



Tile-Basin® 36" x 60"

Right Drain

Item # (Standard Curb): TB-3660-R
Item # (HardCurb®): TBXP-3660-R



Tile-Basin® 42" x 42"

Center Drain

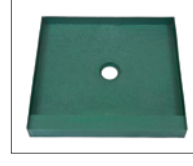
Item # (Standard Curb): TB-4242-C
Item # (HardCurb®): TBXP-4242-C



Tile-Basin® 42" x 42"

Neo Angle

Item # (Standard Curb): TB-4242-N
Item # (HardCurb®): TBXP-4242-N



Tile-Basin® 42" x 48"

Center Drain

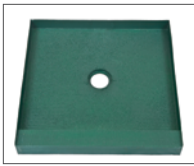
Item # (Standard Curb): TB-4248-C
Item # (HardCurb®): TBXP-4248-C



Tile-Basin® 42" x 60"

Center Drain

Item # (Standard Curb): TB-4260-C
Item # (HardCurb®): TBXP-4260-C

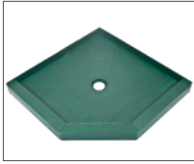


Tile-Basin® 48" x 48"

Center Drain

Item # (Standard Curb): TB-4848-C

Item # (HardCurb®): TBXP-4848-C



Tile-Basin® 48" x 48"

Neo Angle

Item # (Standard Curb): TB-4848-N

Item # (HardCurb®): TBXP-4848-N

Custom Sizes

Order a Custom Tile-Basin®

**ANY SIZE, ANY SHAPE
& ANY DRAIN LOCATION**



COMPONENTS

ACCESSORIES THAT MAKE A DIFFERENCE

DRAINS

POINT & LINEAR

We stock various 3 piece clamping style drains to coordinate with any bathroom finish and budget.

Today's shower designs offer endless options and configurations, giving customers the largest selection than ever before. KBRs point drains and linear drains not only meets the needs of today's customer, it can enhance the appeal of tile, pebble, stone, marble showers, and more.

Our Linear Drains and Premier Point Drains are ideal for remodels and new construction, and its low profile design allows for easy installation in tight spaces, like retrofits and renovation.

STANDARD POINT DRAINS

CLAMPING PVC SHOWER DRAINS



Premier Square Drain
Stainless Steel Strainer

Item #: PREMIER-42275



Premier Square Drain
Brushed Nickel Strainer

Item #: PREMIER-42277



Premier Square Drain
Oil Rubbed Bronze Strainer

Item #: PREMIER-42279



Premier Round Drain
Stainless Steel Strainer

Item #: PREMIER-42281



Square Side Outlet Drain
Stainless Steel Strainer

Item #: PREMIER-SO-422775



Round Side Outlet Drain
Stainless Steel Strainer

Item #: PREMIER-SO-42281

LINEAR DRAINS & STRAINERS

GRATE RISERS & STRAINER INCLUDED WITH GRATES



(Linear Drain Grate
Sold Separate)

Linear Drain Body
(Add 2" for Flange)
2" Outlet ABS Composite

24" Drain Body Item #: LDB-24-AC
32" Drain Body Item #: LDB-32-AC
36" Drain Body Item #: LDB-36-AC
42" Drain Body Item #: LDB-42-AC
48" Drain Body Item #: LDB-48-AC
54" Drain Body Item #: LDB-54-AC
60" Drain Body Item #: LDB-60-AC



(Linear Drain Body
Sold Separate)

Mission Design Grate
Brushed Stainless Steel

24" Grate Item #: LDG-24-M-SS
32" Grate Item #: LDG-32-M-SS
36" Grate Item #: LDG-36-M-SS
42" Grate Item #: LDG-42-M-SS
48" Grate Item #: LDG-48-M-SS
54" Grate Item #: LDG-54-M-SS
60" Grate Item #: LDG-60-M-SS



(Linear Drain Body
Sold Separate)

Mission Design Grate
Oil Rubbed Bronze

24" Grate Item #: LDG-24-M-ORB
32" Grate Item #: LDG-32-M-ORB
36" Grate Item #: LDG-36-M-ORB
42" Grate Item #: LDG-42-M-ORB
48" Grate Item #: LDG-48-M-ORB
54" Grate Item #: LDG-54-M-ORB
60" Grate Item #: LDG-60-M-ORB



(Linear Drain Body Sold Separate)

Oval Design Grate

Brushed Stainless Steel

24" Grate Item #: LDG-24-O-SS

32" Grate Item #: LDG-32-O-SS

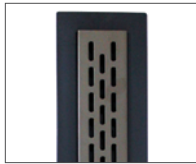
36" Grate Item #: LDG-36-O-SS

42" Grate Item #: LDG-42-O-SS

48" Grate Item #: LDG-48-O-SS

54" Grate Item #: LDG-54-O-SS

60" Grate Item #: LDG-60-O-SS



(Linear Drain Body Sold Separate)

Oval Design Grate

Oil Rubbed Bronze

24" Grate Item #: LDG-24-O-ORB

32" Grate Item #: LDG-32-O-ORB

36" Grate Item #: LDG-36-O-ORB

42" Grate Item #: LDG-42-O-ORB

48" Grate Item #: LDG-48-O-ORB

54" Grate Item #: LDG-54-O-ORB

60" Grate Item #: LDG-60-O-ORB



(Linear Drain Body Sold Separate)

Oval Design Grate

Matte Black

24" Grate Item #: LDG-24-O-MB

32" Grate Item #: LDG-32-O-MB

36" Grate Item #: LDG-36-O-MB

42" Grate Item #: LDG-42-O-MB

48" Grate Item #: LDG-48-O-MB

54" Grate Item #: LDG-54-O-MB

60" Grate Item #: LDG-60-O-MB



(Linear Drain Body Sold Separate)

Tile-In Design Grate

Composite ABS

24" Grate Item #: LDG-24-T-AC

32" Grate Item #: LDG-32-T-AC

36" Grate Item #: LDG-36-T-AC

42" Grate Item #: LDG-42-T-AC

48" Grate Item #: LDG-48-T-AC

54" Grate Item #: LDG-54-T-AC

60" Grate Item #: LDG-60-T-AC



Grate Risers

ABS Composite

Item #: LD-R-AC



Hair Strainer & Riser Pack

(Includes Grate Risers)

ABS Composite

Item #: LD-HSR-AC





" This is my second time using your product. I am no builder, plumber or tile guy and am learning as I go, but I love your products. Easy to install and work with and makes me look like a pro. Glad I found you!"

- David DIY'er & Home Owner

CURBS/RAMPS

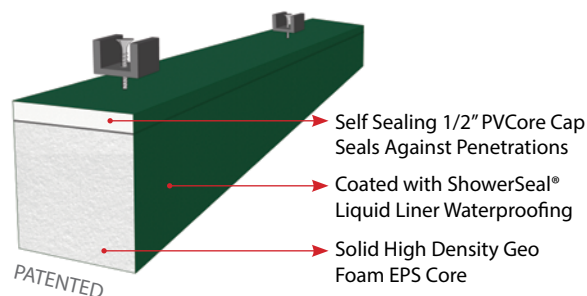
INTERIOR/EXTERIOR

The HardCurb® (PATENTED) is a tileable shower curb that is equipped with a self-sealing anchoring cap used to anchor shower enclosure hardware. The HardCurb® is solidly constructed from non-porous composite materials. The HardCurb® prevents the typical leak and rotting problems associated with wood-built shower curbs. The self-sealing anchoring cap is specifically engineered to permanently hold and seal around the anchoring screws required for shower enclosure hardware.

- *Factory Waterproofed*
- *Self Sealing PVCORE™ Cap*
- *Can be Cut-to-Fit in the Field*
- *Inhibits Mold & Mildew Growth*
(suitable for heavy glass shower enclosures)
- *Will Not Rot - No More Tile Blowouts on Curbs*

HARDCURB® TECHNOLOGY

The KBRS HardCurb® has a solid high density Geo Foam EPS Core with a 1/2" PVCORE™ Cap that is self-sealing, it won't allow any moisture to follow screw heads into the HardCurb® PVC.



KBRS RAMP

The KBRS Ramp is a tileable wet area substrate used to construct an easy transition between the bathroom floor and a shower pan.

The KBRS Ramp is lightweight, yet will provide the superior strength and durability necessary for easy barrier-free shower access. The KBRS Ramp is easily installed using modified thin-set.

CURBS & RAMPS

SHOWER PAN ATTACHMENTS



HardCurb® 4" x 4" x 61"

Cut-to-Fit on Site

Item #: RTT-60-HC



KBRS Ramp 4" x 4" x 61"

8" Run & 1/4" Leading Edge

Item #: RTT-61-RAMP-8

SHOWERSEAT™

CUSTOM & STANDARD SIZES AVAILABLE

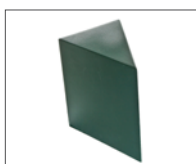
This tileable accessory adds comfort and convenience to the shower experience. The Ladies Leg Ledge is a very popular product with our female customers, while the larger Corner Seat and the Bench Seat allow the bather to relax in a seated position while showering. Custom sizes are also available upon request, and come factory waterproofed.

Any KBRS ShowerSeat™ that you order will always be constructed from solid high-density EPS core. Whether you order one of our many unique standard sizes or have us build one to your custom specification, you can be assured that your KBRS ShowerSeat™ will be durable, easy-to-install and free of hollow voids where mold can fester and grow.

- No "Void" for Mold to Grow
- Will Not Rot & 100% Leak Proof
- No Special Framing Required
- Design Flexibility
- Quick & Easy Install
- Custom Sizes Available
- Strong & Lightweight
- Solid EPS Block Construction
- Can be Cut-to-Fit in the Field

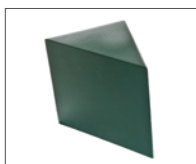
SHOWER SEATS

FACTORY WATERPROOFED



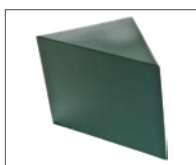
10" x 20" ShowerSeat™
Ladies Leg Ledge Corner Seat
Coated

Item #: RTT-1020-CS



18" x 20" ShowerSeat™
Corner Seat
Coated

Item #: RTT-1820-CS



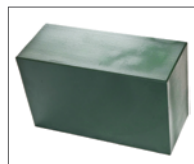
23" x 20" ShowerSeat™
Corner Seat
Coated

Item #: RTT-2320-CS



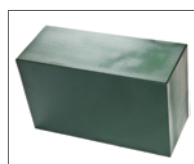
14" x 20" x 30" ShowerSeat™
Bench Seat
Coated

Item #: RTT-30-BS



14" x 20" x 34" ShowerSeat™
Bench Seat
Coated

Item #: RTT-32-BS



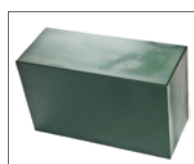
14" x 20" x 36" ShowerSeat™
Bench Seat
Coated

Item #: RTT-36-BS



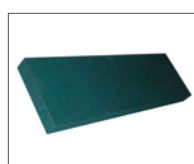
14" x 20" x 42" ShowerSeat™
Bench Seat
Coated

Item #: RTT-42-BS



14" x 20" x 48" ShowerSeat™
Bench Seat
Coated

Item #: RTT-48-BS



14" x 3" x 48" ShowerSeat™
Floating Bench Seat
Coated

Item #: RTT-48-FBS

Custom Sizes

Order a Custom ShowerSeat™
Create Your Own Custom Combination



SHOWERNICHE™

PVCORE™ STRENGTH

The KBRS ShowerNiche™ is a tileable recessed shower niche manufactured from rigid, non-porous PVCORE™. The ShowerNiche™ is 100% waterproof and does not require box framing for support. The ShowerNiche™ mounts flush with the wall's backer board (no flange to protrude). Once in position, it only requires a few backer board screws to mount it to a wall stud.

The KBRS ShowerNiche™ is an easy-to-install, solid alternative to a traditional framed-in recesses shower niche. The ShowerNiche™ attaches in seconds to a wall stud using just a few tile backer board screws. With multiple shapes and sizes available, the ShowerNiche™ allows for design flexibility and creative combinations.

- 8 Available Sizes
- Factory Waterproofed
- No Special Framing Required
- Can be Used with Any Wall Material
- Attaches to Wall Stud with Backerboard Screws

SHOWER NICHEs

FACTORY WATERPROOFED



ShowerNiche™ 6" x 14"
Exterior: 6" x 14" | Interior: 5" x 13"

Item #: RTT-614-N



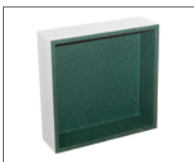
ShowerNiche™ 8" x 20"
Exterior: 9.25" x 21" | Interior: 8.25" x 20"
(Includes Fixed Shelf)

Item #: RTT-820COMBO-N



ShowerNiche™ 11" x 14"
Exterior: 11" x 14" | Interior: 10" x 13"

Item #: RTT-1114-N



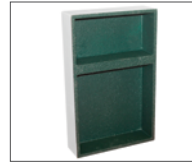
ShowerNiche™ 12" x 12"
Ext.: 13.25" x 13.25" | Interior: 12.25" x 12.25"

Item #: RTT-1212-N



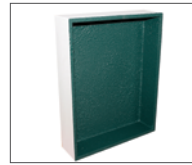
ShowerNiche™ 12" x 20"
Exterior: 13.25" x 21" | Interior: 12.25" x 20"
(Includes Fixed Shelf)

Item #: RTT-1220COMBO-N



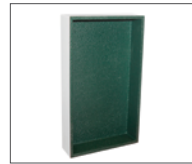
ShowerNiche™ 12" x 20"
Exterior: 13.25" x 21" | Interior: 12.25" x 20"
(Includes Adjustable Shelf)

Item #: RTT-1220-N



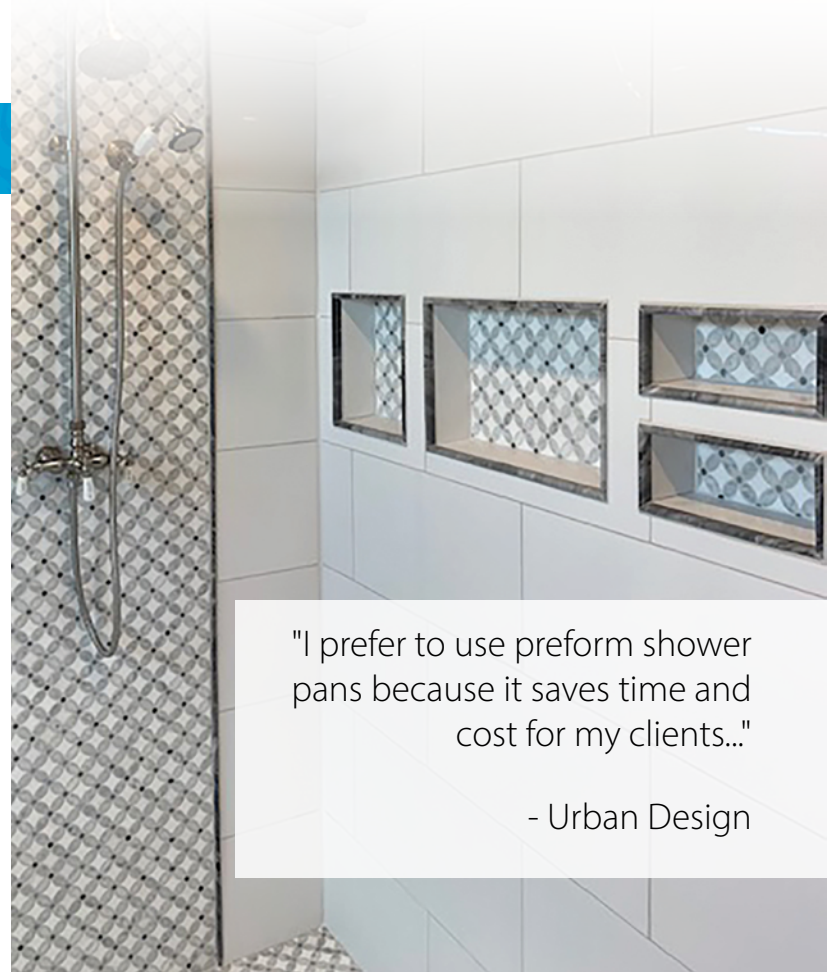
ShowerNiche™ 13" x 17"
Exterior: 14.5" x 18.5" | Interior: 13.5" x 17.5"

Item #: RTT-1317-N



ShowerNiche™ 22" x 14"
Exterior: 22" x 14" | Interior: 21" x 13"

Item #: RTT-2214-N

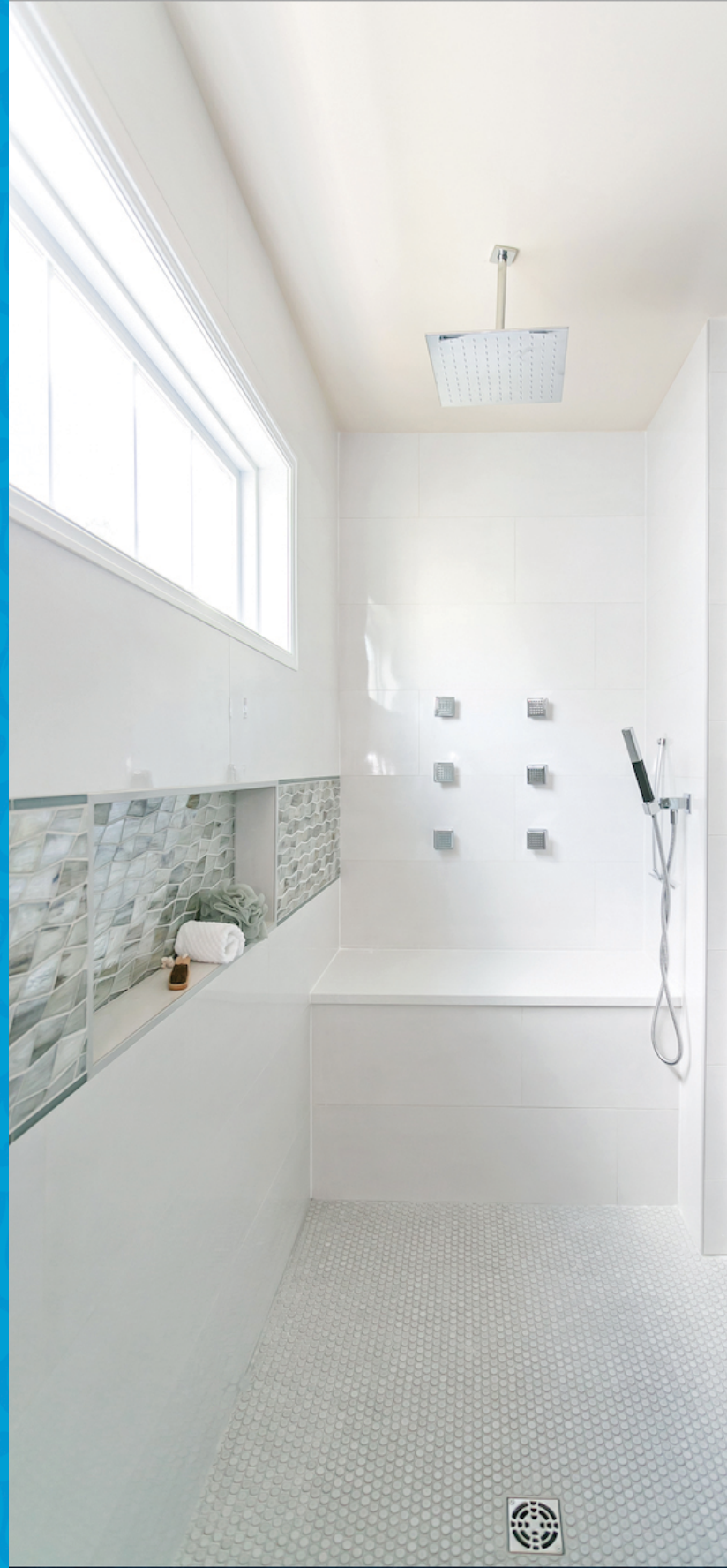


"I prefer to use preform shower pans because it saves time and cost for my clients..."

- Urban Design

WATERPROOFING

SOLUTIONS YOU CAN TRUST



SHOWERSEAL®

POSITIVE SIDE WATERPROOFING



COMPLETE SEAMLESS COVERAGE

We believe that a waterproofing system should be void of problematic seams that can fail due to a building's structural movement. With that in mind, we engineered the ShowerSeal® waterproofing system.

The ShowerSeal® family of waterproofing products consist of a simple-to-apply, high-quality combination of flexible polyurethane sealant, gauging fabric and a fluid-applied waterproofing membrane. When combined, the ShowerSeal® waterproofing system creates a seamless barrier that can handle the stresses of a building's normal structural movement.

The KBRs ShowerSeal® waterproofing products are designed with one goal: ZERO LEAKS. Each product is specially formulated for easy interior or exterior application and incorporates fast-drying technology for same day tiling.

SHOWERSEAL® POLYURETHANE SEALANT



KBRs Polyurethane Sealant is used on all 'seams' and can be used for interior or exterior projects. It provides a permanent seal for affixing two components and filling joints in a variety of waterproofing installation types.

- Interior or Exterior
- For Use Above & Below Waterline (Marine Grade)

SHOWERSEAL® GAUGING FABRIC

KBRs Gauging Fabric ensures that the proper membrane thickness is obtained when using liquid waterproofing. Gauging Fabric is a woven polymeric material that will strengthen the bond between all seams within your shower system.



- Reinforces and Seals Joints and Seams
- Provides a Minimum 30 MIL Protection when Fully Saturated
- Apply Any ANSI 118.10 Waterproofing (liquid)

SHOWERSEAL® SEAMLESS LIQUID LINER



KBRs ShowerSeal® Liquid Liner is a specially formulated waterproofing membrane that will completely "rubberize" your shower. No sticky, messy application, no large sheets to glue to the wall, no overlapped joints to fail and leak, just smooth, even, monolithic coverage you can count on.

- Meets ANSI 118.10 Requirements
- Field Applied with Brush, Roller, or Trowel

SHOWERSEAL®
POSITIVE SIDE WATERPROOFING COMPONENTS



10.3 oz. Polyurethane Sealant
ShowerSeal® Polyurethane Sealant

Item #: SSEAL-POLY



6" x 75' Gauging Fabric
ShowerSeal® Gauging Fabric

Item #: SSEAL-675-RF



1 US Gallon Liquid Liner
ShowerSeal® Roll-On Waterproofing

Item #: SSEAL-1GAL



3.5 US Gallon Liquid Liner
ShowerSeal® Roll-On Waterproofing

Item #: SSEAL-3.5GAL



BACKER BOARD

LIGHTWEIGHT & WATERPROOF



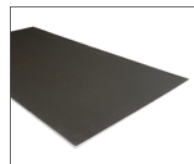
KBRs BACKER BOARD

The integrity of your tile is only as good as its foundation. KBRs Backer Board provides a strong, lightweight, waterproof, and vapor-resistant tile base for wet areas. It is an XPS foam panel manufactured with a waterproof proprietary blend of synthetic polymer mortar and an alkali resistant fiber mesh. This gives it a highly rigid structure and exceptional bonding strength.

- *Alkali-Resistant Glass Fiber Mesh*
- *Polymeric Cement Mortar*
- *Durable & Lightweight*
- *Easy to Cut in the Field*
- *XPS Foam*

BACKER BOARD

EASY TO INSTALL



KBRs Backer Board 1/2"
Waterproof Backer Board 36" x 60"

Item #: KBOARD-12

The best part of the KBRS shower system is the efficiency it brings to our business. Translating into more clients, better bathrooms, and greater profitability for our company.

- Alexander Frech
Welcom Design & Remodeling



FOR INSTALLATION
INSTRUCTIONS &
VIDEOS PLEASE
VISIT OUR WEBSITE:
WWW.KBRS.COM

**FOLLOW US ON
SOCIAL MEDIA**

FACEBOOK:

FACEBOOK.COM/KBRSINC

YOUTUBE:

YOUTUBE.COM/KBRSINC

INSTAGRAM:

INSTAGRAM.COM/KBRSINC

PINTEREST:

PINTEREST.COM/KBRSINC

TIKTOK:

TIKTOK.COM/@KBRSINC





WWW.KBRS.COM