
Argent 2.0™

Porcelain Stone®



Argent 2.0™

Porcelain Stone®

Immerse yourself in the allure of Argent 2.0.

Serene. Tranquil. In the whirlwind of our daily lives, we all crave havens where we can pause, unwind, and reconnect with ourselves. Argent 2.0™ draws inspiration from the natural world, imbuing the classic Argent stone with a softened aesthetic that serves as a subtle, tonal sanctuary, grounding us in a more peaceful state of mind.

Moving away from the bold hues of its predecessor, Argent 2.0 embraces a palette conducive to learning, exploration, and introspection within our homes and beyond. Seven neutral tones harmonize with delicate, sun-kissed warm and deep, evocative earthy hues. Crafted in our Tennessee factories, these fully rectified tiles effortlessly transition between the timeless allure of stone and the charm of terracotta, evoking a Mediterranean ambiance that resonates with both traditional and contemporary sensibilities.

The gentle touch doesn't end with its tonal spectrum. Complementing the collection are two mosaic options – a classic 2x2 pattern and an energetic angled mosaic – expanding design possibilities, enhanced by matching bullnose and cove base trims.

So take a deep breath and immerse yourself in the allure of Argent 2.0 – a colorful collection crafted to soothe both the soul and the space it inhabits.

- Timeless allure of stone with the charm of terracotta available in durable porcelain
- Field tile and mosaics offered
- Matching bullnose and cove base trims
- Field tile – Rectified
- Made in the USA



Floor: **ARG31** ▶ White Tiger 12 x 24 UPS

Counter: **ARG34** ▶ Marble Faun 4 x 4 Random Angle Mosaic UPS

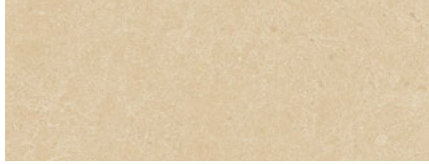




Floor: **ARG32** ▶ Silver Sage 12 x 12 and 2 x 2 Mosaic UPS
Wall: **ARG32** ▶ Silver Sage 6 x 24 UPS and **ARG38** ▶ Enchanted Forest 6 x 24 UPS

Color Palette

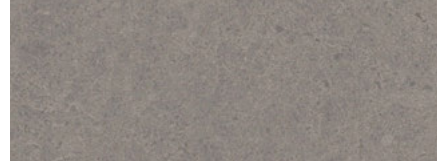
Available Colors



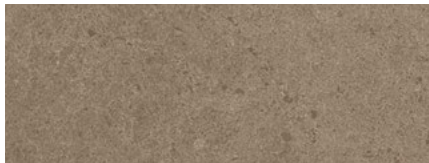
ARG01 ▶ Winter Garden



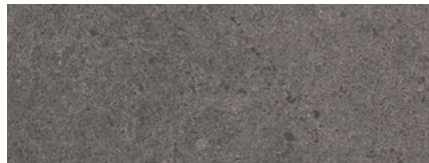
ARG15 ▶ Memphis Blues



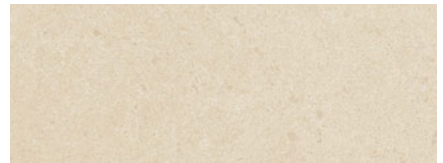
ARG17 ▶ Clean Slate



ARG18 ▶ Concrete Jungle



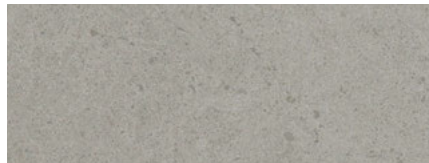
ARG20 ▶ On the Rocks



ARG31 ▶ White Tiger



ARG32 ▶ Silver Sage



ARG33 ▶ Grey Tabby



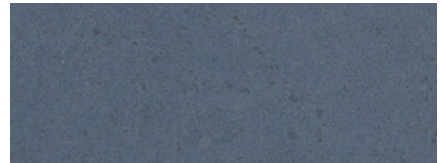
ARG34 ▶ Marble Faun



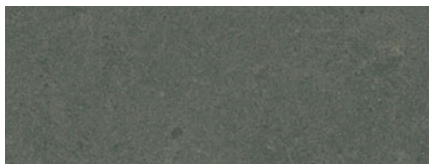
ARG35 ▶ Golden Glow



ARG36 ▶ Sunkissed Rose

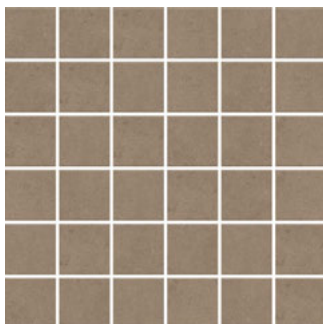


ARG37 ▶ Night Sky

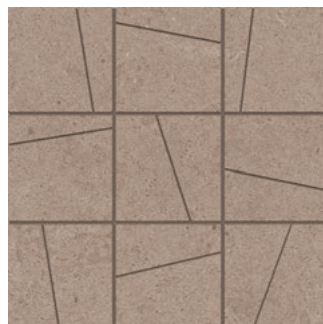


ARG38 ▶ Enchanted Forest

Available Mosaics



2 x 2 Stacked Mosaics
(available in all colors)



4 x 4 Random Angle Mosaics
(available in all colors)



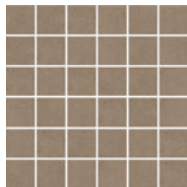
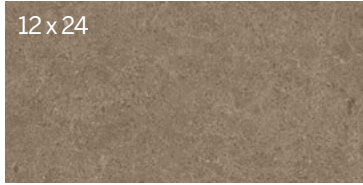
Floor: **ARG37** ▶ Night Sky 12 x 24 UPS

Back Wall: **ARG17** ▶ Clean Slate 4 x 4 Random Angle Mosaic

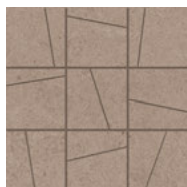
Specifications



Sizes



2 x 2
Stacked Mosaic
Mounted on a
298 x 298 sheet



4 x 4 Random Angle
Mosaic
Mounted on a
298 x 298 sheet

Get Planked!

Our Porcelain Stone® products are available in popular plank shapes with no minimum order and quick fulfillment.

See website for more details and sizes.



Sizes & Finishes

Field Tile - Rectified

Available in all colors

| Nominal (in) | Actual (mm) | Thickness (mm) | Grout Joint (mm) | Finish |
|--------------|-------------|----------------|------------------|--------|
| 6 x 24 | 147 x 597 | 9.5 | 3 | UPS |
| 12 x 12** | 297 x 297 | 9.5 | 3 | UPS |
| 12 x 24 | 297 x 597 | 9.5 | 3 | UPS |

Note: Field tile is rectified with a 3mm grout joint

** This size is not a standard stocking item. Please allow 2-4 weeks for delivery depending on availability.

Mosaics

Available in all colors

| Nominal (in) | Sheet Size (mm) | Thickness (mm) | Grout Joint (mm) | Finish |
|--------------------|-----------------|----------------|------------------|--------|
| 2 x 2 Stacked* | 298 x 298 | 9.5 | 3 | UPS |
| 4 x 4 Random Angle | 298 x 298 | 9.5 | 3 | UPS |

* Mounted on 12 x 12 sheet (coverage area 0.97sf)

Coordinating Trim

Available in all colors †

| Nominal (in) | Actual (mm) | Thickness (mm) | Grout Joint (mm) | Finish |
|------------------------|-------------|----------------|------------------|--------|
| 4 x 24 Single Bullnose | 96 x 597 | 9.5 | 3 | UPS |
| 6 x 12 Cove Base† | 150 x 297 | 9.5 | 3 | UPS |

† Not available in all colors



4 x 24 Single
Bullnose



6 x 12 Cove Base

Product Performance

| | | |
|---------------------|------------|------------|
| Breaking Strength | ≥450 lbf | ASTM C648 |
| Bond Strength | >200 psi | ASTM C482 |
| Chemical Resistance | Unaffected | ASTM C650 |
| Frost Resistance | Resistant | ASTM C1026 |
| Water Absorption | <0.50% | ASTM C373 |
| Scratch Hardness | 7 | Mohs Scale |

Wet Dynamic Coefficient of Friction Range

| | | |
|-----|-------------|-------------|
| UPS | 0.50 - 0.60 | ANSI A326.3 |
|-----|-------------|-------------|

Shade & Texture Index

Argent 2.0 has a shade variation of V2.

| | | | | |
|----|----|----|----|----------------------------|
| V1 | V2 | V3 | V4 | V1 Uniform appearance |
| | | | | V2 Slight Variation |
| | | | | V3 Moderate Variation |
| | | | | V4 Substantial Variation |

This porcelain tile product is produced with a V2 variation. While the colors and/or textures present on a single piece of tile will be indicative of the colors and/or textures to be expected on the other tiles, the amount of colors and/or texture on each piece may vary significantly. It is recommended that the range be viewed before selection.

Recommended Use

Argent 2.0™ is recommended for interior floors dry, interior walls, countertops, exterior walls, pool waterlines and full linings† in both residential and commercial applications. Argent 2.0 is not recommended for exterior horizontal surfaces or exterior paving. See CrossvilleInc.com for detailed installation instructions.

† Excludes mesh mounted mosaics.

Care and Maintenance

Regular cleaning is the best way to keep Argent 2.0 tile looking good for years to come. Use clean, hot water (combined with a household cleaner for more aggressive cleaning). Rinse thoroughly and dry with a soft cloth. No waxes are needed. More information regarding the care and maintenance of Crossville products is available at CrossvilleInc.com.



Wet area use for Mosaics

Crossville® produces the Argent 2.0 2x2 and 4x4 Random Mosaics with the Cross-Sheen (UPS) finish. The ANSI A326.3 wet Dynamic COF of Argent 2.0 is ≥0.50. Their small sizes ensure frequent grout joints which provides traction and drainage. Crossville cannot control situations involving incorrect installation, improper slope to the drain for elimination of standing water and poor surface cleaning.

This information is provided so that customers may make a realistic and informed decision when comparing Argent 2.0 to other tile products in wet area environment, such as residential/commercial bathrooms, showers, and interior pool decks. Information listed here is subject to change. Please refer to CrossvilleInc.com for the latest, most accurate information.

Our Warranty

Crossville® guarantees that its products will meet or exceed the performance specifications outlined in ANSI A137.1 and in the performance data section of the Crossville® general product catalog. For complete details check our website at CrossvilleInc.com.

Information listed here is subject to change. Please refer to CrossvilleInc.com for the latest, most accurate information.

Floor: **ARG15** ▶ Memphis Blues 12 x 24 UPS
 Wall: **ARG35** ▶ Golden Glow 6 x 24 UPS

Crossville® Sample Express

Complimentary Samples are available at CrossvilleInc.com/products/Argent-2-0

Loose Tile Samples

Sizes may vary depending on product series
 Max. of 4 large field tile per order

Standard Shipping

FedEx Ground

CrossvilleInc.com

You'll find comprehensive information about Crossville's entire portfolio of products. You can also learn about the latest styles and trends from industry experts, download detailed care and maintenance instructions for our various products, or browse electronic versions of Crossville's product brochures. So whether you need information about Crossville products or tile in general, please visit us at CrossvilleInc.com. Information listed here is subject to change.

Printed in USA. | NOTE: Due to printing limitations, colors pictured cannot be guaranteed to match actual flooring material.

Trade Organizations



Environmentally Aware



Argent 2.0™

Crossville®

PO Box 1168
Crossville, TN
38557

Phone 931.484.2110
Fax 931.456.2956
E-Mail Crossc@CrossvilleInc.com
Web CrossvilleInc.com



Above: **ARG17** ▶ Clean Slate 12 x 24
ARG20 ▶ On the Rocks 2 x 2 Mosaic UPS
ARG31 ▶ White Tiger 12 x 24 UPS
Cover: **ARG18** ▶ Concrete Jungle 12 x 24 UPS

 CROSSVILLE®