

GARDEN STATE TILE

Together We Can Design For Life

GST CRUSH



THE RANGE

GB

Grey Beige

W

White

G

Grey

DG

Dark Grey



RIGOROUS APPROACH

Crush's new ceramic proposal applies technology to the stylistic values of Brutalist architecture that emerged in the 1950s in the UK and combines simplicity with a design precision offering strong expressiveness and the intensity of natural texture.

Aesthetic and decorative ostentation makes way for practicality and the power of shapes.

Crush places the essence of the natural texture and its primary elements at the heart of the design approach: light, expressive characterization, and volumes.

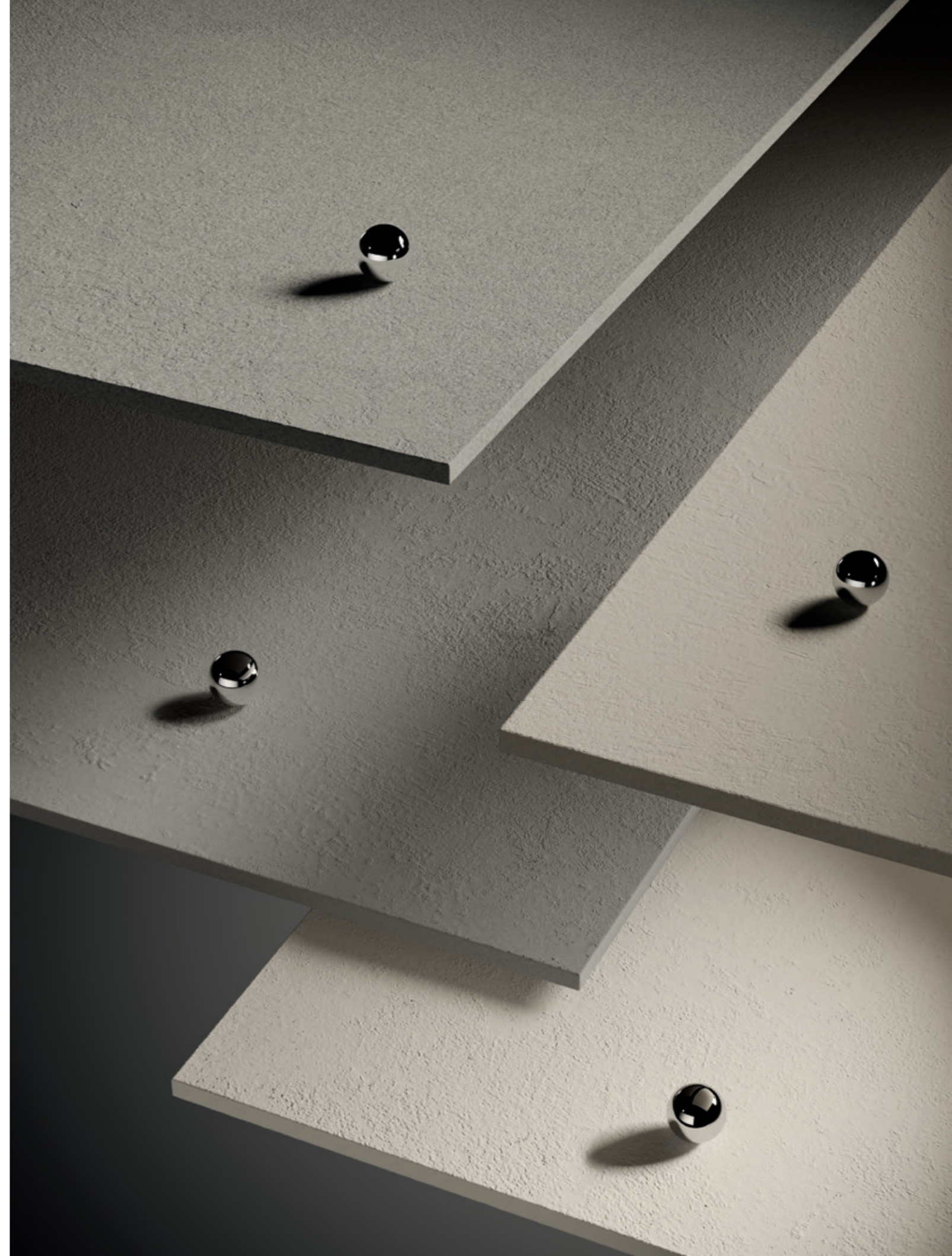
A deliberately rough surface, like visual concrete, ideal for environments that seek out the mark of an authentic, contemporary, and essential style in the charm of industrial material.

CRUSH

The term *Crush* literally means to crush or smash. A concept that perfectly describes the technological and industrial process, obtained with a mix of raw materials without any kind of digital intervention and without the addition of glazes.

A genuinely unique product in its technical and aesthetic make-up.

Crush is created in 2 structural versions, a neutral base and a textured one, and in 4 colors (white, grey, dark grey and grey beige). It comes in 4 sizes 120x120, 60x120 and 60x60 cm and in two surface finishes for dual purpose, in both an internal as well as an outdoor context.



CRUSH
white

W



CRUSH
white **W**



Floor

CRUSHQ 120W RM

Walls and staircase

CRUSH 120W RM

CRUSH G120W

CRUSH
grey **G**



CRUSH **G**
grey



Floor

CRUSH 120G RM

Right wall

CRUSHQ 120G RM

CRUSH **GB**
grey beige



CRUSH GB
grey beige



Floor and walls

CRUSH 120GB RM

Right wall

CRUSHQ 120GB RM

CRUSH
dark grey DG



CRUSH **DG**
dark grey

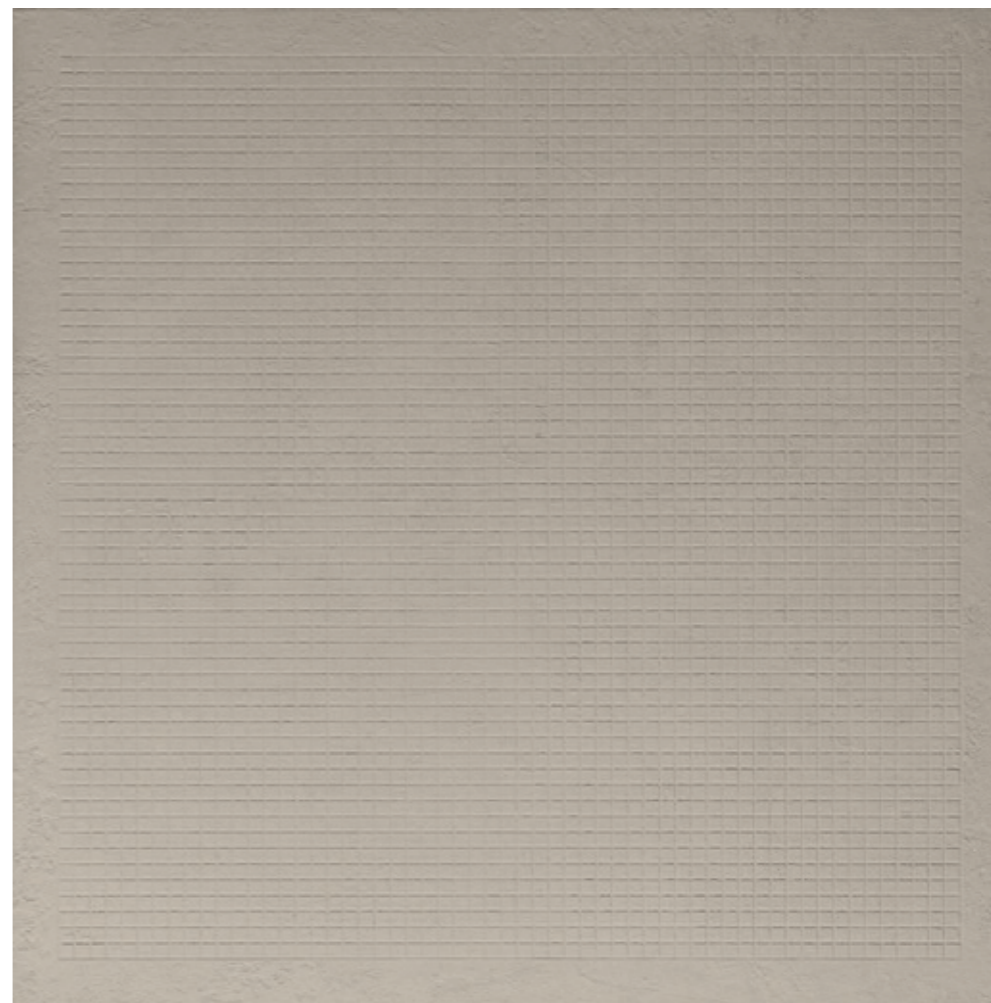
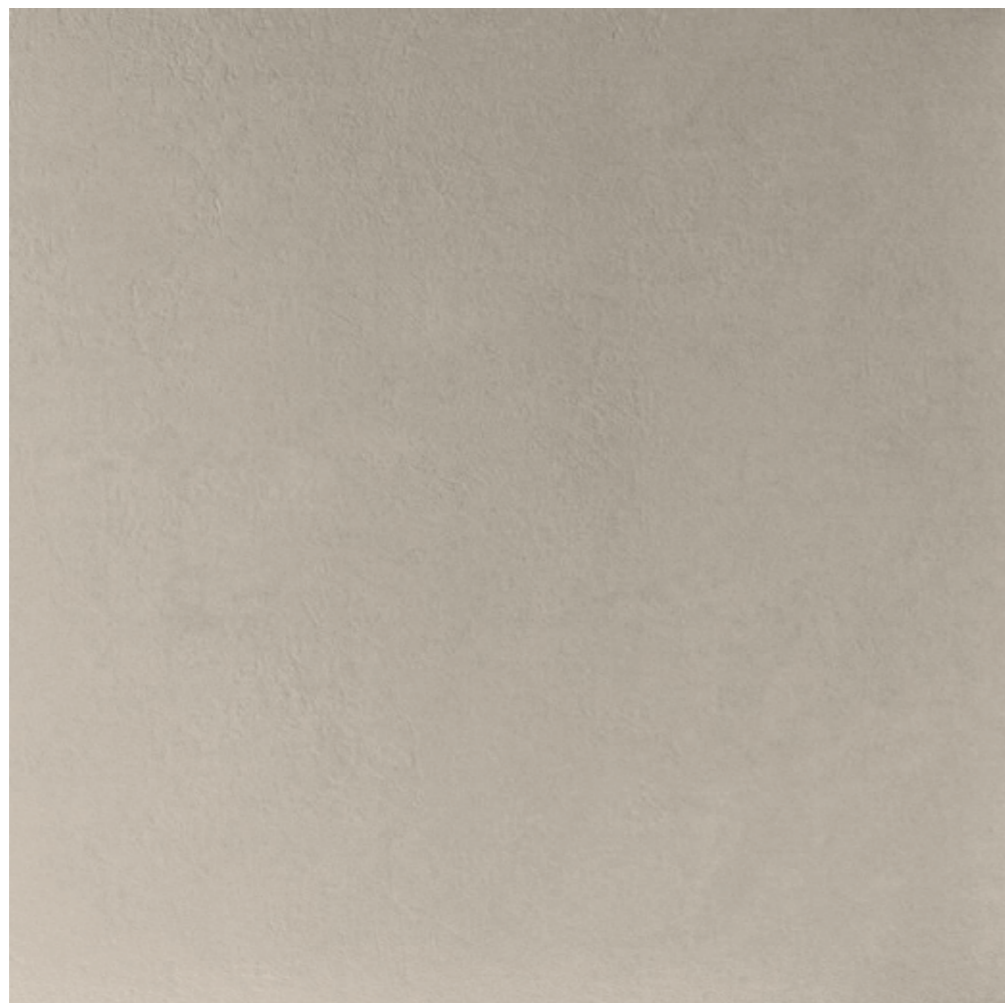


Floor and walls
CRUSH 120DG RM
Bench
CRUSH 120W RM

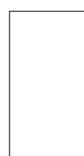
through-body porcelain tile

CRUSH GB

grey beige



120x120
48"x48"



60x120
24"x48"



60x60
24"x24"



30x30
12"x12"



120x120
48"x48"



CRUSH 120GB RM

CRUSH 12GB RM

CRUSH 60GB RM

MK.CRUSH 30GB



CRUSH R120GB RM Grip

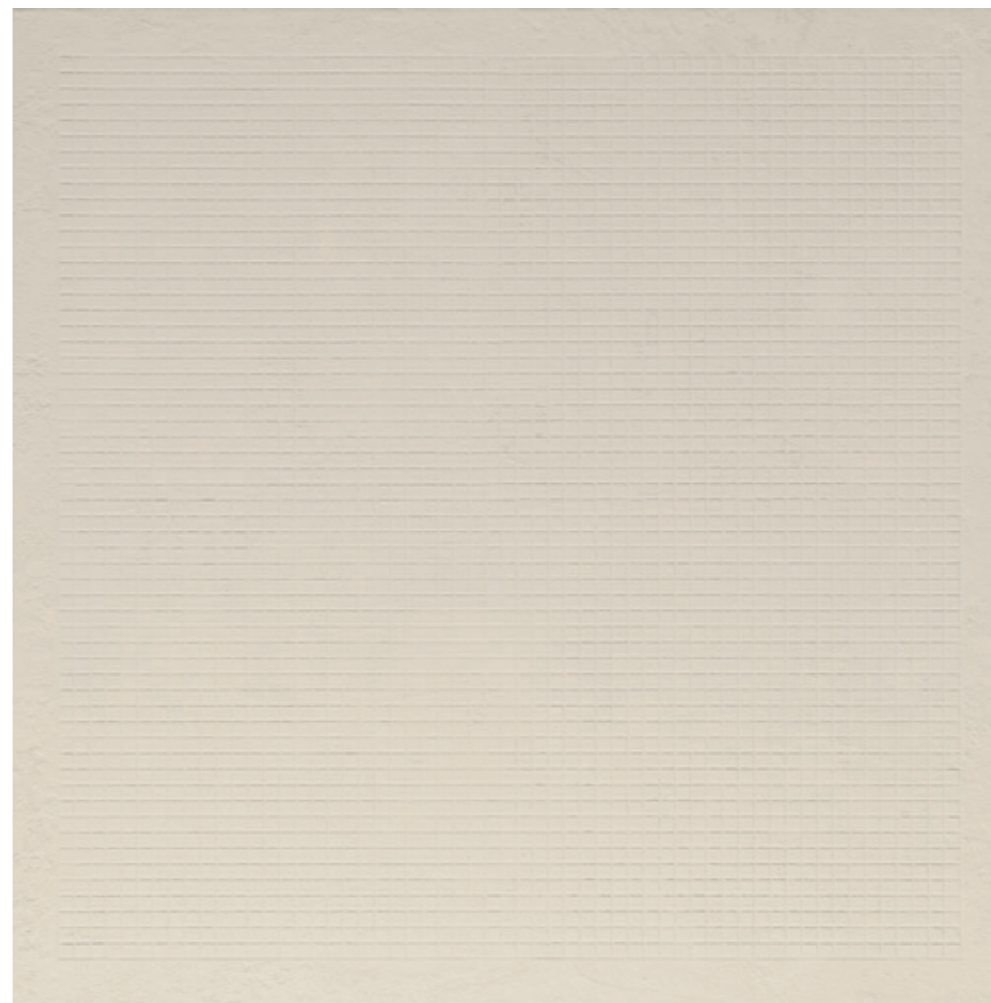
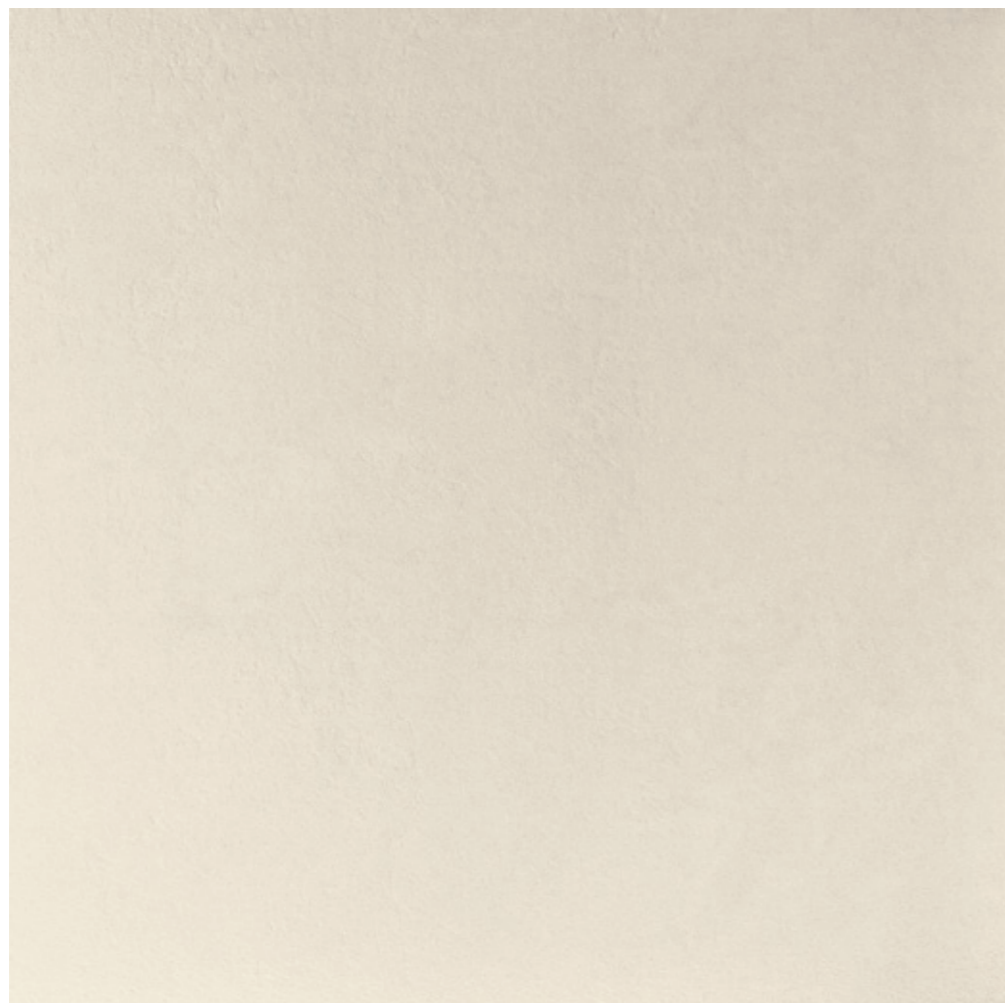
CRUSH R60GB RM Grip



CRUSHQ 120GB RM

through-body porcelain tile

CRUSH
white **W**



120x120
48"x48"



60x120
24"x48"



60x60
24"x24"



30x30
12"x12"



120x120
48"x48"



CRUSH 120W RM

CRUSH 12W RM

CRUSH 60W RM

MK.CRUSH 30W



CRUSH R120W RM Grip

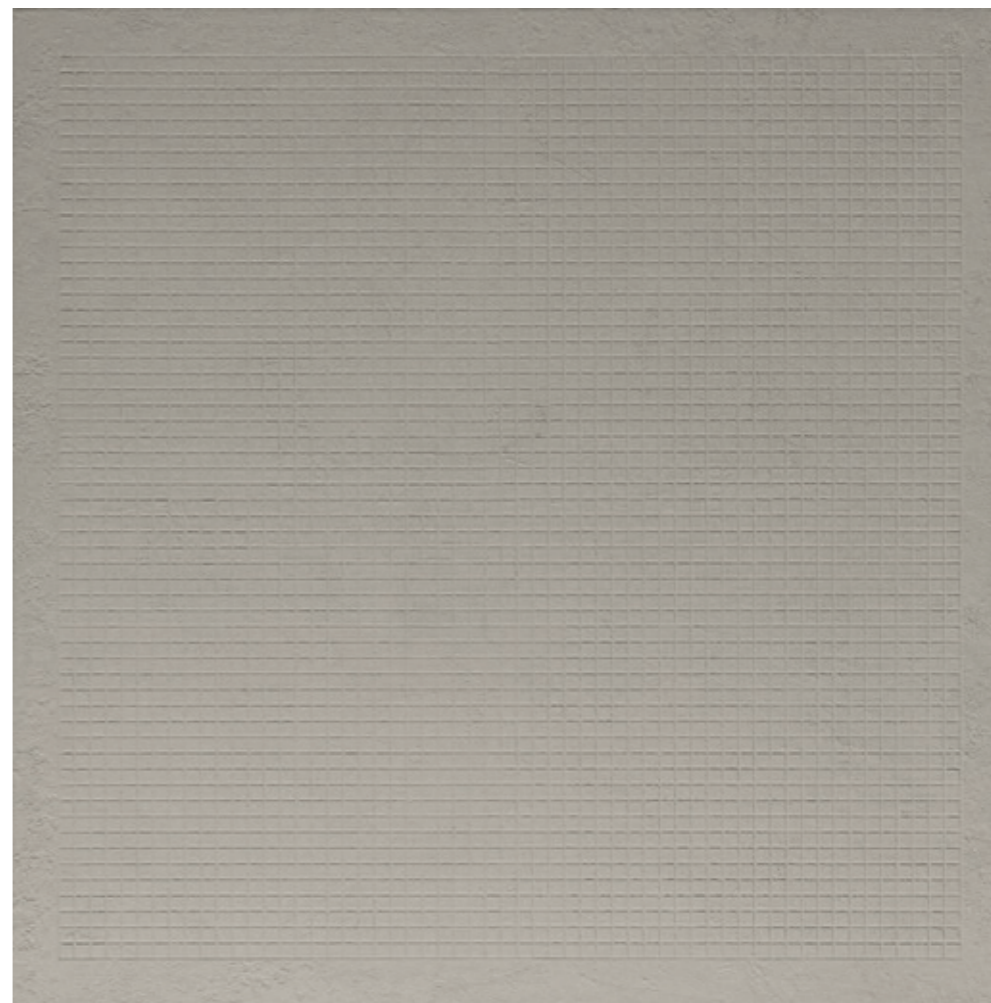
CRUSH R60W RM Grip



CRUSHQ 120W RM

through-body porcelain tile

CRUSH **G**
grey



120x120
48"x48"



60x120
24"x48"



60x60
24"x24"



30x30
12"x12"



120x120
48"x48"



CRUSH 120G RM

CRUSH 12G RM

CRUSH 60G RM

MK.CRUSH 30G



CRUSH R120G RM Grip

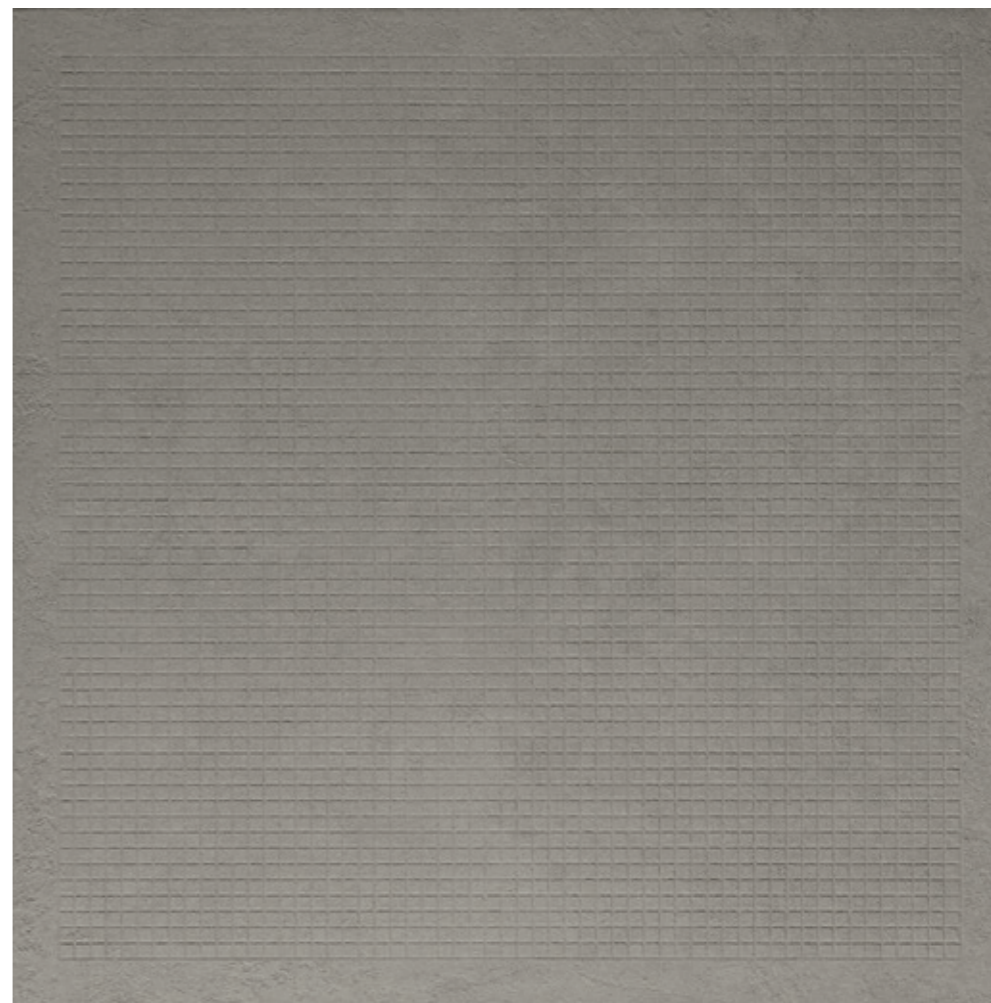
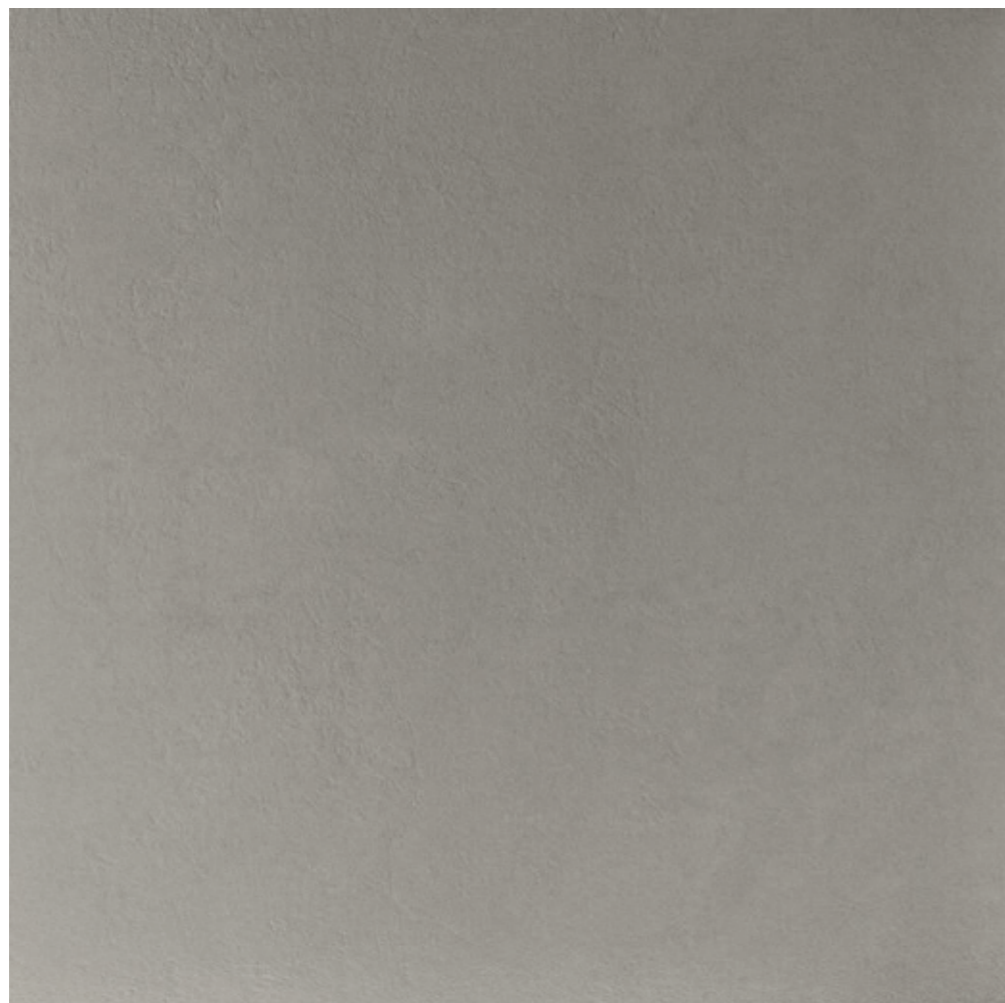
CRUSH R60G RM Grip



CRUSHQ 120G RM

through-body porcelain tile

CRUSH
dark grey **DG**



120x120
48"x48"



60x120
24"x48"



60x60
24"x24"



30x30
12"x12"



120x120
48"x48"



CRUSH 120DG RM

CRUSH 12DG RM

CRUSH 60DG RM

MK.CRUSH 30DG



CRUSH R120DG RM Grip

CRUSH R60DG RM Grip

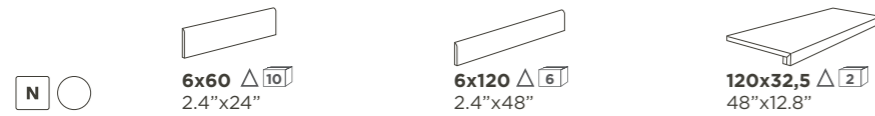


CRUSHQ 120DG RM

THROUGH-BODY PORCELAIN TILE



TRIMS



	6x60 2.4"x24"	6x120 2.4"x48"	120x32,5 48"x12.8"
CRUSH GB	CRUSH BT60GB	CRUSH BT120GB	CRUSH G120GB
CRUSH W	CRUSH BT60W	CRUSH BT120W	CRUSH G120W
CRUSH G	CRUSH BT60G	CRUSH BT120G	CRUSH G120G
CRUSH DG	CRUSH BT60DG	CRUSH BT120DG	CRUSH G120DG

PACKING

NOMINAL SIZE	EDGE	THICKNESS	BOX			PALLET		
			PCS/BOX	SM/BOX	KG/BOX	BOX/PALLET	MQ/PALLET	KG/PALLET
120x120 / 48"x48"	rectified	10,5	1	1,44	35,93	36	51,84	1313,60
60x120 - 24"x48"	rectified	10,5	2	1,44	36,55	27	38,88	1006,85
60x60 - 24"x24"	rectified	10,5	3	1,08	26,50	32	34,56	868,00
30x30 MOSAICO - 12"x12"	rectified	10,5	6	0,54	12,38	48	25,92	614,24

	DIN EN 16165 Annex B (DIN 51130) (R)	DIN EN 16165 Annex A (DIN 51097) (A+B+C)	BCR REP. CEC 6/81		DM 14/6/89 N.236		PENDULUM TEST BS (INGLESE)	PENDULUM TEST AS/NXS 4856:2004 (AUSTRALIANO)	PENDULUM TEST UNE ENV 12633:2003 (SPAGNOLO)	BOT 3000 (DCOF)
			g.a.	g.b.	c.a.	g.b.				
CRUSH	R10	A+B	> 0,4	> 0,4	> 0,4	> 0,4	> 25	> 25	1	> 0.42
CRUSH R Grip	R11	B+C	> 0,4	> 0,4	> 0,4	> 0,4	> 36	> 45	3	> 0.42

TECHNICAL SPECIFICATIONS PORCELAIN STONEWARE UNI EN 14411 (ISO 13006) - Bia (appendice/appendix G)

Specification	Test methods	Requirements in accordance to the standards	Average value
DIMENSIONS AND APPEARANCE	ISO 10545-2	PROSPECT G.1	COMPLIANT
WATER ABSORPTION	ISO 10545-3	≤ 0,5 %	< 0,1%
FLEXURAL RESISTANCE		MIH/min.35 N/mm²	> 45 N/mm²
MODULUS OF RUPTURE	ISO 10545-4	THICKNESS ≥7,5 mm: min. 1300 N	THICKNESS* 6,5 mm 1800 N*
		THICKNESS <7,5 mm: min. 700 N	10 mm 3000 N*
			20 mm 13000 N*
DEEP ABRASION RESISTANCE	ISO 10545-6	≤ 175 mm³	< 140 mm³
LINEAR EXPANSION THERMIC COEFFICIENT	ISO 10545-8	AVAILABLE ON REQUEST	≤ 7x10 ⁻⁶ °C ⁻¹
RESISTANCE TO SUDDEN TEMPERATURE CHANGES	ISO 10545-9	AVAILABLE ON REQUEST	RESISTANT
FROST RESISTANCE	ISO 10545-12	ALWAYS TESTED	RESISTANT
HOUSEHOLD CHEMICALS AND SWIMMING POOL WATER CLEANSERS		MIH. B min. B	MIH. B min. B
ACIDS AND LOW CONCENTRATION	ISO 10545-13	FROM LA, LB TO LC DA LA, LB A LC	FROM LA, LB TO LC DA LA, LB A LC
ACIDS AND HIGH CONCENTRATION		AVAILABLE ON REQUEST	AVAILABLE ON REQUEST
STAIN RESISTANCE UGL		AVAILABLE ON REQUEST	AVAILABLE ON REQUEST
STAIN RESISTANCE GL	ISO 10545-14	MIH. 3 min. 3	MIH. 3 min. 3

* VALUES REFERRED TO 60X60 SIZE



OUR SHOWROOMS

NEW JERSEY

Dover
Princeton
Roselle Park
Wall
West Berlin

PENNSYLVANIA

Bethlehem
Lancaster
Philadelphia
Warminster

SOUTH CAROLINA

Charleston
Columbia

GEORGIA

Savannah

GARDEN STATE TILE

Together We Can Design For Life

GSTILE.COM    @GARDENSTATETILE