

Hide and Sleek
Wall Tile



Hide and Sleek

Wall Tile

Hide and Sleek – a wall tile collection from Crossville – offers an alluring shift in flat and three-dimensional tiles. Light plays along the pearlescent finish, casting shadows and illuminating vertical spaces throughout the day, causing the unique surface texture to recede and emerge in sophisticated elegance. While the flat tiles glitter and glow with subtle shimmer, the three-dimensional ceramic tiles evoke an abstracted triangular geometry that is as organic as it is edgy and refined.

Offered in five harmonious colors, this large-scale 12"x36" wall tile is as beautiful in a residential shower or backsplash as it is in a large-scale commercial setting. Easy to clean and maintain, durable, and long-lasting, this Hide and Sleek ceramic tile offers an enduring and sustainable surface.

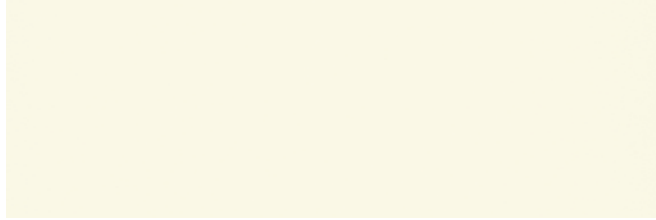


Wall: HSL32 ► Buff 3D 12 x 36



Wall: **HSL31** ▶ Chalk 3D 12 x 36

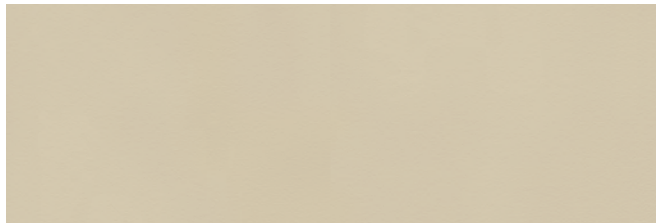
Color Palette



HSL01 ▶ Chalk



HSL31 ▶ Chalk 3D



HSL02 ▶ Buff



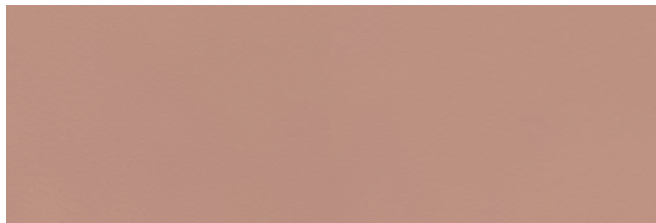
HSL32 ▶ Buff 3D



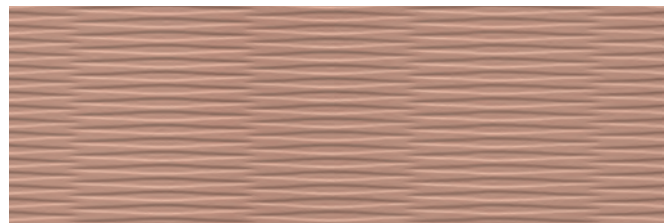
HSL03 ▶ Khaki



HSL33 ▶ Khaki 3D



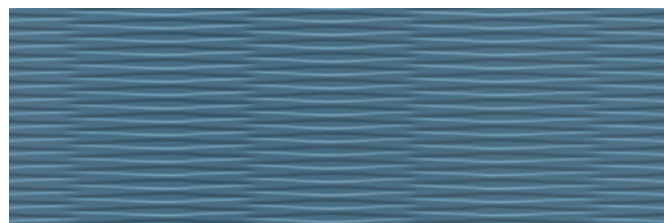
HSL04 ▶ Coral



HSL34 ▶ Coral 3D



HSL05 ▶ Lapis

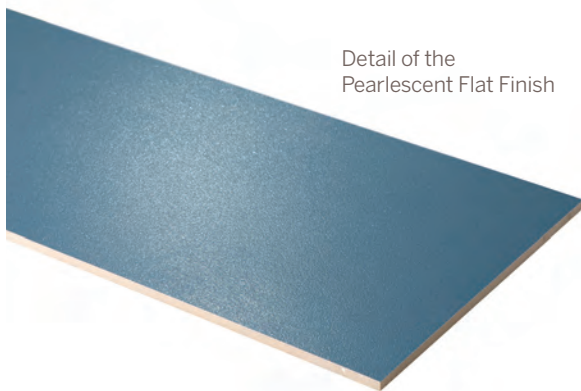


HSL35 ▶ Lapis 3D



Wall: **HSL35** ▶ Lapis 3D 12 x 36

Pearlescent (PRL) – A soft and subtle light-reflecting finish created through advanced glazing and decoration techniques.



Detail of the
Pearlescent Flat Finish



Detail of the
Pearlescent 3D Finish



Wall: **HSL02** ▶ Buff 12 x 36



Wall: **HSL03** ▶ Khaki 12 x 36 and **HSL33** ▶ Khaki 12 x 36 3D

Specifications



Sizes* shown in HSL35 Lapis 3D

12 x 36



CrossvilleInc.com

If you want a better idea of what Crossville tile would look like in a particular room setting, simply visit our website and click on Cross-Vision. This powerful software tool allows you to visualize different types of Crossville tile. In addition, you'll find comprehensive information about Crossville's entire portfolio of products. You can also learn about the latest styles and trends from industry experts, download detailed care and maintenance instructions for our various products, or browse electronic versions of Crossville's product brochures. So whether you need information about Crossville products or tile in general, please visit us at CrossvilleInc.com. Information listed here is subject to change.

►► Crossville® Sample Express

Visit the website to learn more:

CrossvilleInc.com/Products/Hide-and-Sleek

Loose Tile Samples

Sizes may vary depending on product series
Max. of 4 large field tile per order

Standard Shipping

FedEx Ground

Sizes

Field Tile - Ceramic

Nominal Size (in)	Actual Size (cm)	Thickness (mm)	Grout Joint (mm)	Finish
12 x 36 Flat	30 x 90	10.5	2	Pearlescent
12 x 36 3D*	30 x 90	12	2	Pearlescent

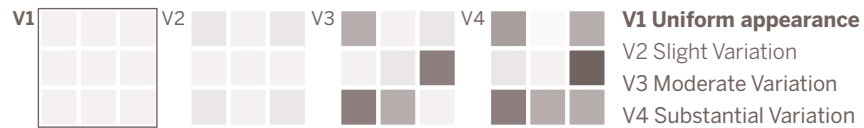
This product is rectified

Crossville recommends a minimum 2mm grout joint.

* 3 D tiles are directional - there is an arrow on back of the tile to show direction

Shade & Texture Index

Hide and Sleek has a shade variation of V1



Differences among pieces from the same production run are minimal.

Product Performance

Water Absorption	14.0% – 20.0%	ASTM C373
Breaking Strength	≥300 lbf	ASTM C648
Bond Strength	≥200 lbf	ASTM C482
Facial Dimension	±0.10%	ASTM C499
Range of Thickness (in)	0.025	ASTM C499
Warpage - Diagonal	±0.30%	ASTM C485
Wedging	±0.25%	ASTM C502
Frost Resistance	N/A	ASTM C1026
Chemical Resistance	Unaffected	ASTM C650
Scratch Hardness	6	Mohs

Recommended Use

Hide and Sleek tile is recommended for interior vertical surfaces in residential and commercial applications.

Our Warranty

Regular cleaning is the best way to keep Hide and Sleek tile looking good for years to come. Use clean, hot water (combined with a household cleaner for more aggressive cleaning). Rinse thoroughly and dry with a soft cloth. No waxes are needed. More information regarding the care and maintenance of Crossville® products is available at CrossvilleInc.com

Care and Maintenance

Crossville Inc. guarantees that its products will meet or exceed the performance specifications outlined in ANSI A137.1 and in the performance data section of the Crossville, Inc. general product catalog. For complete details check our website at CrossvilleInc.com.

Information listed here is subject to change. Please refer to CrossvilleInc.com for the latest, most accurate information.

Trade Organizations



Environmentally Aware

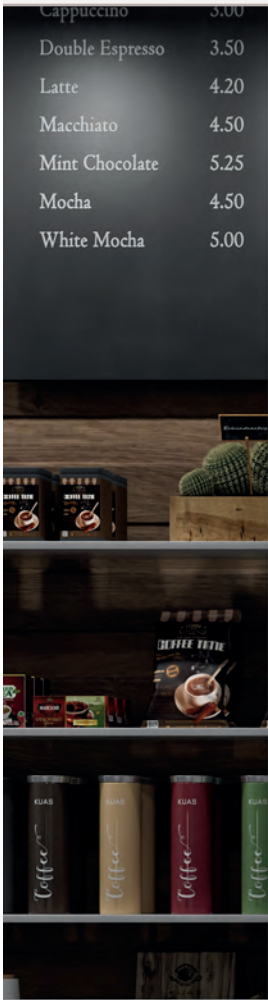


Hide and Sleek

Crossville, Inc.

PO Box 1168
Crossville, TN
38557

Phone 931.484.2110
Fax 931.456.2956
E-Mail Crossc@CrossvilleInc.com
Web CrossvilleInc.com



LIT-HSL-23

Above: Wall: **HSL05** ▶ Lapis 12 x 36
Cover: Wall: **HSL04** ▶ Coral 12 x 36 and, **HSL34** ▶ Coral 12 x 36 3 D

