

GARDEN STATE TILE

Together We Can Design For Life

GST 2CM **SPIRIT**



SPIRIT



2CM PORCELAIN



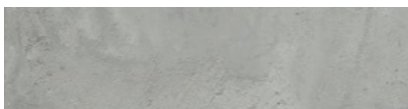
Ash Grip Rectified
24"x24" Paver



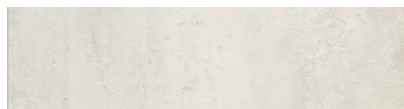
Chalk Grip Rectified
24"x24" Paver



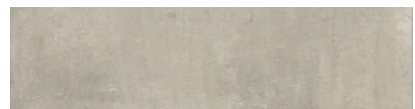
Greige Grip Rectified
24"x24" Paver



Ash Grip Rectified
12"x48" Paver

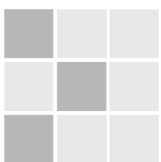


Chalk Grip Rectified
12"x48" Paver



Greige Grip Rectified
12"x48" Paver

SHADE VARIATION:










V2

Slight Variation



SPIRIT

TECHNICAL SPECIFICATIONS:

	REFERENCE VALUE	DECLARED VALUE	TEST METHOD
 SURFACE ABRASION		IV	ASTM C1027
 WATER ABSORPTION	≤0.5%	MEETS REQUIREMENT	ASTM C373
 CHEMICAL RESISTANCE	AS REPORTED	NOT AFFECTED	ASTM 650
 DYNAMIC COEFFICIENT OF FRICTION	≥0.66 WET	MEETS REQUIREMENT	ANSI A137.1
 STAIN RESISTANCE	AS REPORTED	NOT AFFECTED	ASTM C1378
 BREAKING STRENGTH	AS REPORTED	≥400	ASTM C648
 RESISTANCE TO FREEZE	AS REPORTED	RESISTANT	ASTM C1026



RESISTANT FOR THE HOUSE The product is water-resistant: it stops liquids, body oils, acidic and staining substances from penetrating the tiles. It resists scratches, scuffs and gauges better than any other floor covering. It does not absorb fumes, odors or smoke. It doesn't discolor or fade when exposed to sunlight, or other natural elements. It is completely fire proof. It resists burns and doesn't feed a fire. Its high resistance to abrasive dirt and grime makes it suitable even for heavy-traffic areas of the house such as hallways, entrances, foyers and walkways.

FROST RESISTANT Exceeding the ADA standard requirements, the **Garden State Tile** product can also be used for outside applications. It stands up to abrupt temperature changes and freezing-thaw cycles. When properly installed according to ANSI A137.1, it's strong enough to be used in exterior applications even in frigid climates. Proper consideration must be given to the anti-slip requirements of the area to be tiled. **ANTI-SLIP** The testing conducted on our finished product will guarantee that all of our tiles will have an anti-slip surface so they may be used with total confidence in kitchen and bath applications. The Milestone product is perfect for both home and commercial interiors, such as restaurants, offices, retail stores, etc. Its anti-slip properties provide a safe walking surface in both wet and dry conditions, according to the Americans with Disabilities Act.

HYGIENE/SANITATION & EASY CLEANING The **Garden State Tile** product doesn't absorb odors or bacteria of any kind. It's easy to clean with a damp sponge, mop, or cloth. For a more intense cleaning, simply use a mild solution of water and a common household detergent. Regular cleaning will stop the growth of germs and bacteria in damp areas such as the bathroom.

PACKAGING:

SIZES	METRIC (CM)	THICKNESS (MM)	PIECES PER BOX	UOM PER BOX	WEIGHT PER BOX	BOXES PER PALLET	UOM PER PALLET	WEIGHT PER PALLET*
FIELD TILES								
12"x48" RECTIFIED MATTE	30x120	20 mm	4	16 SF	147	16	256 SF	2,352
24"x24" RECTIFIED MATTE	60x60	20 mm	2	8 SF	76	36	288 SF	2,736

* WEIGHT PER PALLET DOES NOT INCLUDE PALLET WEIGHT ITSELF.

ALL OTHER SIZES WILL BE PACKAGED AS ORDERED.

PLEASE CONTACT MILESTONE CUSTOMER SERVICE AT 1-877-356-7461 FOR PACKAGING INFORMATION.

MINIMUM GROUT SIZE RECOMMENDED = 5 MM (OR APPROX. 3/16") IF STAGGERED TILE PLACEMENT, WE

RECOMMEND

USING A 30% OFFSET. IF SPECIFIED BRICK PATTERN WITH 1/2 PATTERN MANDATORY, A BIGGER GROUT IS RECOMMENDED TO HIDE IMPERFECTIONS OF INSTALLATION (MINIMUM 1/4").



OUR SHOWROOMS

NEW JERSEY

Dover
Princeton
Roselle Park
Wall
West Berlin

PENNSYLVANIA

Bethlehem
Lancaster
Philadelphia
Warminster

SOUTH CAROLINA

Charleston
Columbia

GEORGIA

Savannah

GARDEN STATE TILE

Together We Can Design For Life

GSTILE.COM



@GARDENSTATETILE