

**GARDEN STATE TILE**

Together We Can Design For Life

**ESSEX**

**LUXURY VINYL TILE**





# ESSEX

---

ESSEX FROM GARDEN STATE TILE IS A LUXURY VINYL TILE COLLECTION SUITABLE FOR BOTH COMMERCIAL AND RESIDENTIAL USE. THIS BEAUTIFUL 7"X48" WOOD-LOOK RIGID CORE COLLECTION IS 100% WATERPROOF, SCRATCH RESISTANT, STAIN RESISTANT, AND DENT RESISTANT - ENSURED BY A LIFETIME RESIDENTIAL WARRANTY.







7"x48" PLANK



END CAP



FLUSH STAIRNOSE



OVERLAPPING STAIRNOSE



QUARTER ROUND



T MOLDING



TL MOLDING



REDUCER



7"x48"



# BARREL



7"x48" PLANK



END CAP



FLUSH STAIRNOSE



OVERLAPPING STAIRNOSE



QUARTER ROUND



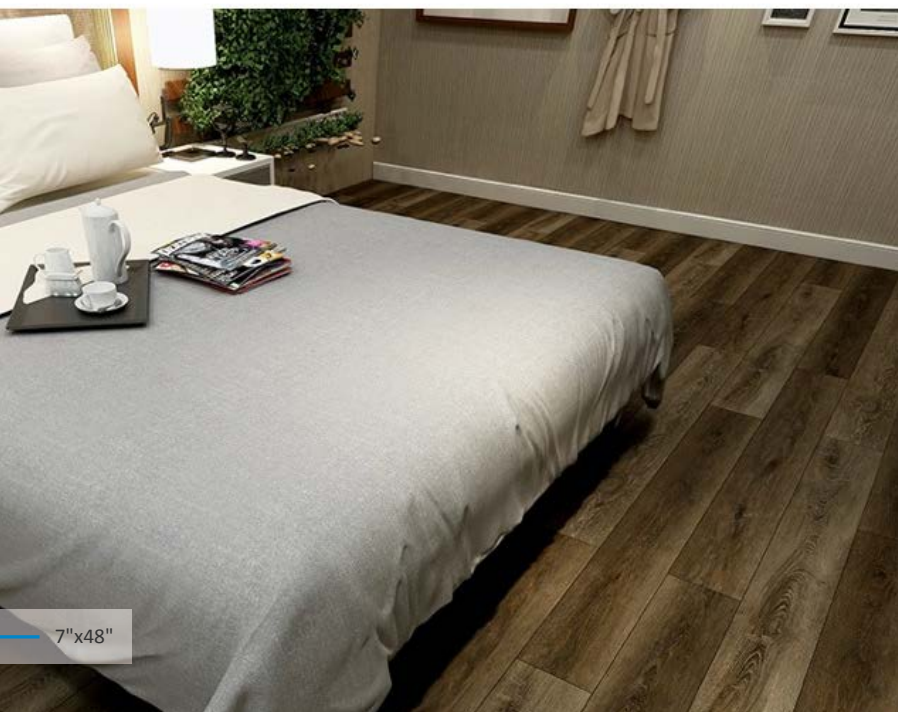
T MOLDING



TL MOLDING



REDUCER







7"x48" PLANK



END CAP



FLUSH STAIRNOSE



QUARTER ROUND



T MOLDING



TL MOLDING



REDUCER



7"x48"





7"x48" PLANK



END CAP



FLUSH STAIRNOSE



QUARTER ROUND



T MOLDING



REDUCER



OVERLAPPING STAIRNOSE







7"x48" PLANK



END CAP



FLUSH STAIRNOSE



QUARTER ROUND



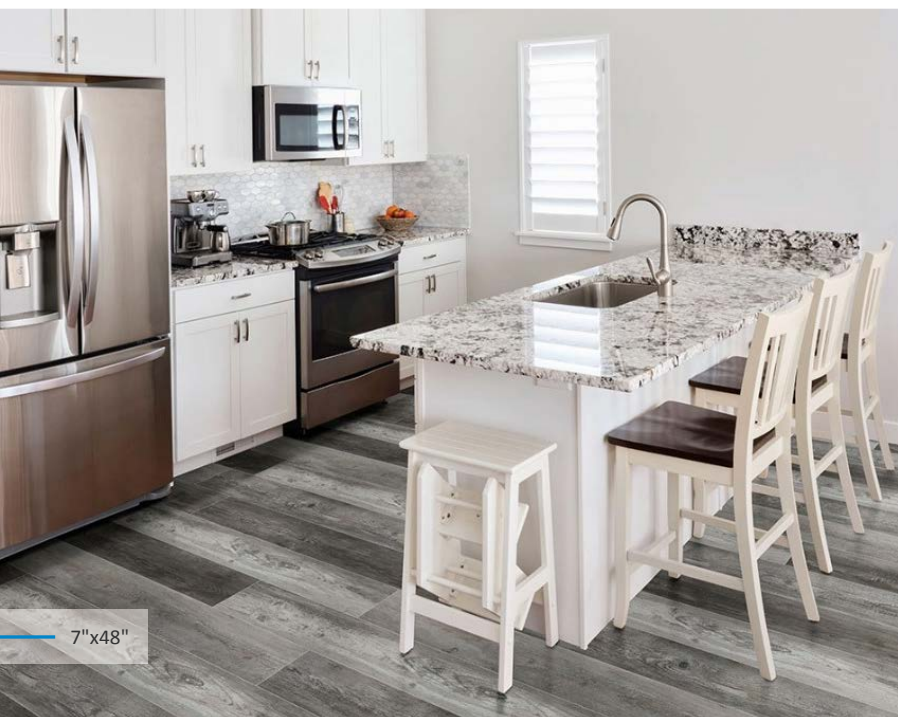
T MOLDING



REDUCER



OVERLAPPING STAIRNOSE



7"x48"



# BRACKEN HILL



7"x48" PLANK



END CAP



FLUSH STAIRNOSE



QUARTER ROUND



T MOLDING



REDUCER



OVERLAPPING STAIRNOSE







7"x48" PLANK



END CAP



FLUSH STAIRNOSE



OVERLAPPING STAIRNOSE



QUARTER ROUND



T MOLDING



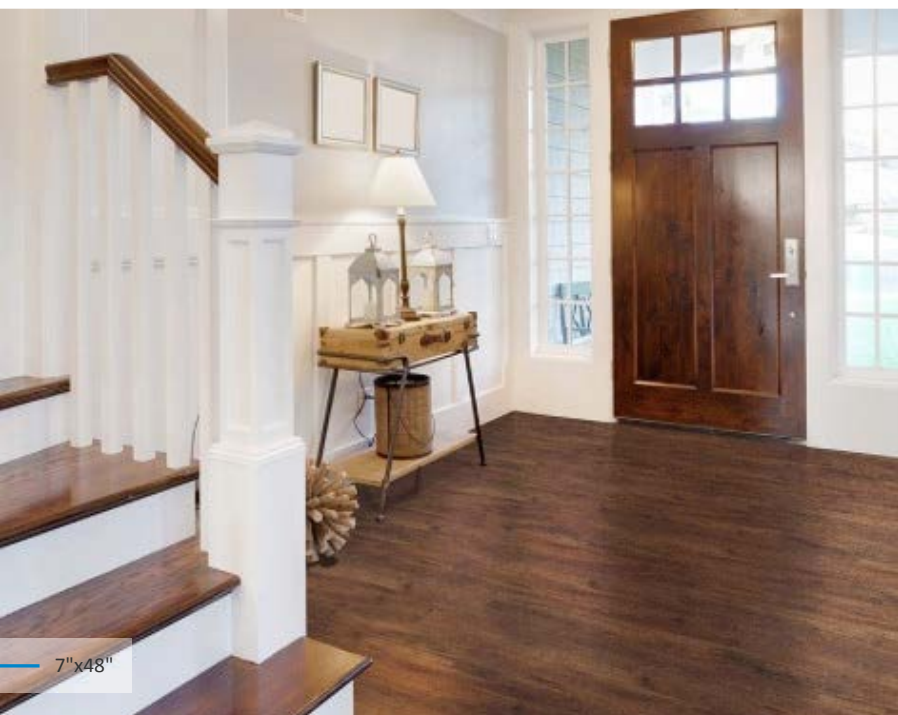
TL MOLDING



REDUCER



STAIR TREAD



7"x48"



# CRANTON



7"x48" PLANK



END CAP



FLUSH STAIRNOSE



QUARTER ROUND



T MOLDING



REDUCER



OVERLAPPING STAIRNOSE



7"x48"





# DRAVEN



7"x48" PLANK



END CAP



FLUSH STAIRNOSE



QUARTER ROUND



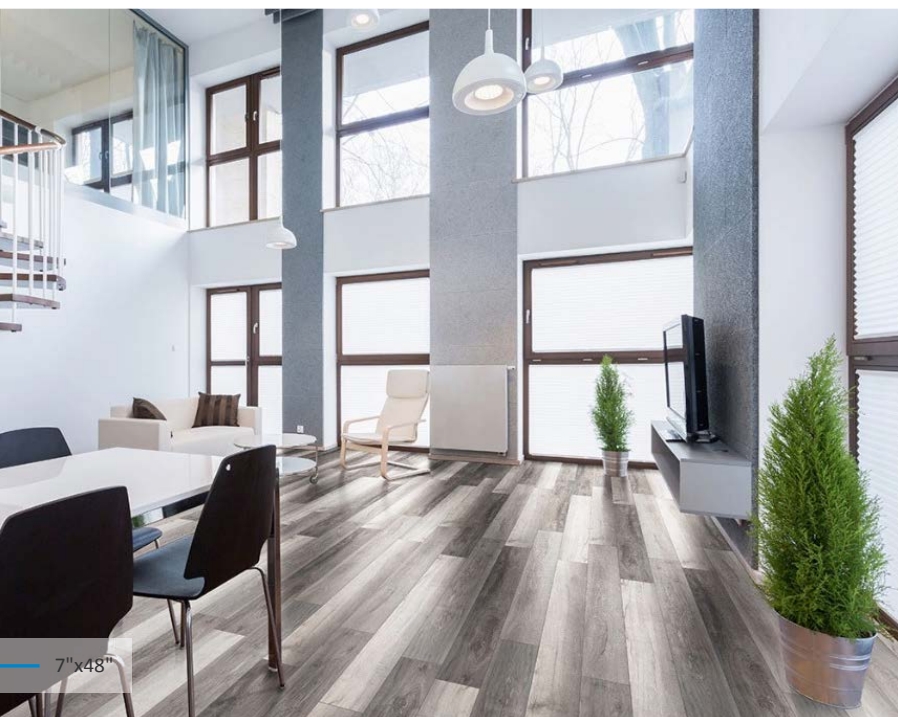
T MOLDING



REDUCER



OVERLAPPING STAIRNOSE



7"x48"

# EXOTICA

GST



7"x48" PLANK



END CAP



FLUSH STAIRNOSE



OVERLAPPING STAIRNOSE



QUARTER ROUND



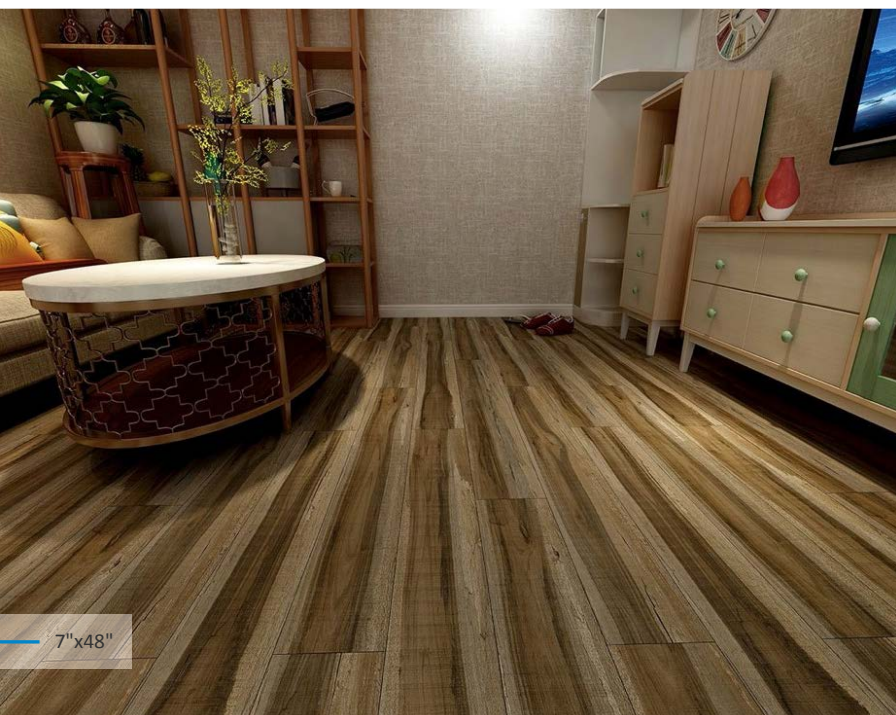
T MOLDING



TL MOLDING



REDUCER



7"x48"





# FAUNA



7"x48" PLANK



END CAP



FLUSH STAIRNOSE



OVERLAPPING STAIRNOSE



QUARTER ROUND



T MOLDING



TL MOLDING



REDUCER



STAIR TREAD



7"x48"





7"x48" PLANK



END CAP



FLUSH STAIRNOSE



OVERLAPPING STAIRNOSE



QUARTER ROUND



T MOLDING



TL MOLDING



REDUCER





# HAWTHORNE



7"x48" PLANK



END CAP



FLUSH STAIRNOSE



OVERLAPPING STAIRNOSE



QUARTER ROUND



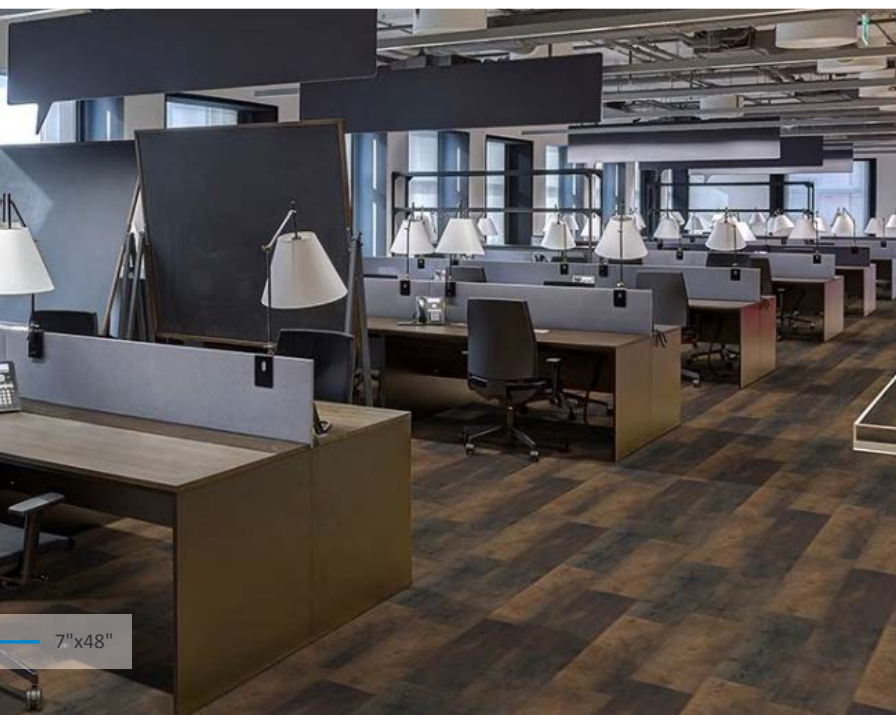
T MOLDING



TL MOLDING



REDUCER



# JENTA



7"x48" PLANK



END CAP



FLUSH STAIRNOSE



QUARTER ROUND



T MOLDING



REDUCER



OVERLAPPING STAIRNOSE





# KATELLA ASH



7"x48" PLANK



END CAP



FLUSH STAIRNOSE



OVERLAPPING STAIRNOSE



QUARTER ROUND



T MOLDING



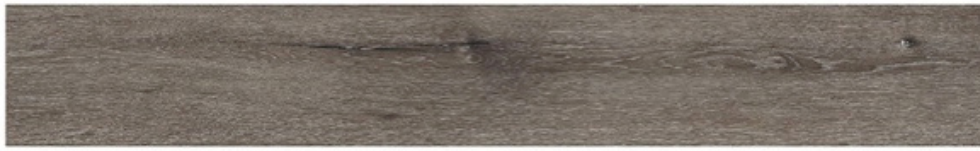
TL MOLDING



REDUCER



# LUDLOW



7"x48" PLANK



END CAP



FLUSH STAIRNOSE



OVERLAPPING STAIRNOSE



QUARTER ROUND



T MOLDING



TL MOLDING



REDUCER



STAIR TREAD







7"x48" PLANK



END CAP



FLUSH STAIRNOSE



OVERLAPPING STAIRNOSE



QUARTER ROUND



T MOLDING



TL MOLDING



REDUCER



7"x48"



# SANDINO



7"x48" PLANK



END CAP



FLUSH STAIRNOSE



OVERLAPPING STAIRNOSE



QUARTER ROUND



T MOLDING



TL MOLDING



REDUCER





# STABLE



7"x48" PLANK



END CAP



FLUSH STAIRNOSE



OVERLAPPING STAIRNOSE



QUARTER ROUND



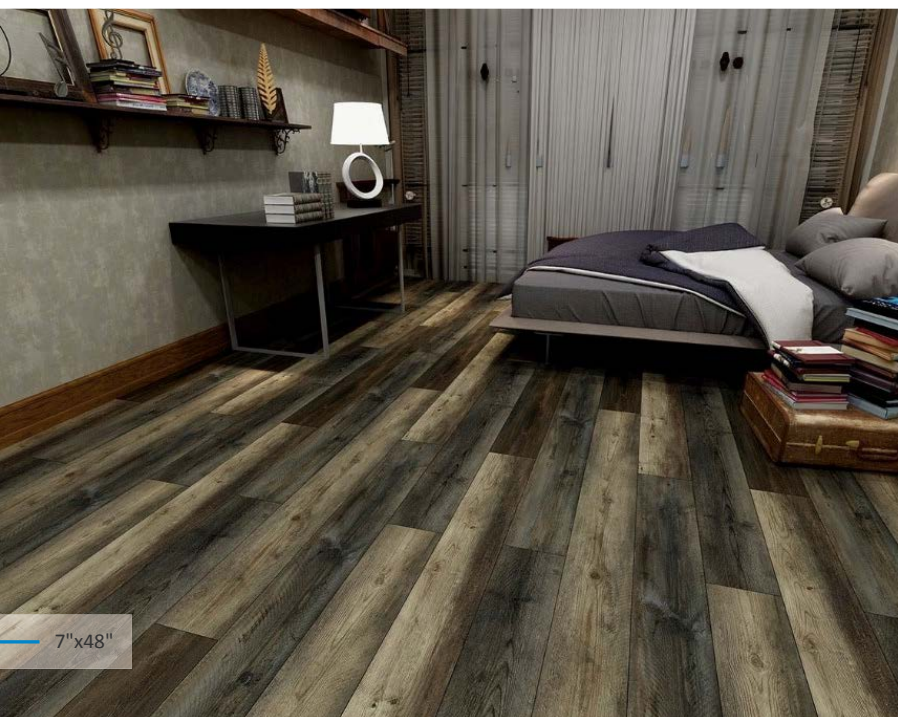
T MOLDING



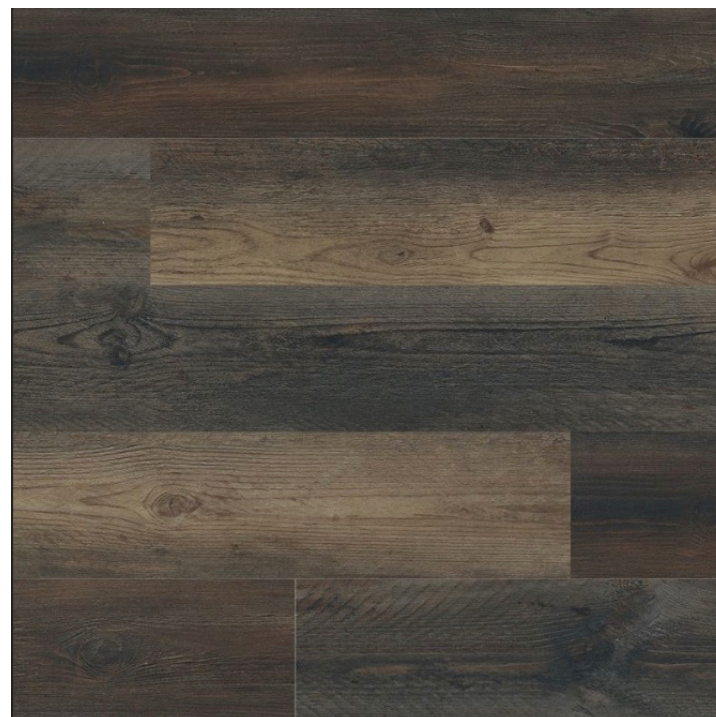
TL MOLDING



REDUCER



7"x48"



# WEATHERED BRINA



7"x48" PLANK



END CAP



FLUSH STAIRNOSE



OVERLAPPING STAIRNOSE



QUARTER ROUND



T MOLDING



TL MOLDING



REDUCER





# WHITFIELD GRAY



7"x48" PLANK



END CAP



FLUSH STAIRNOSE



OVERLAPPING STAIRNOSE



QUARTER ROUND



T MOLDING



TL MOLDING



REDUCER



STAIR TREAD



# WOBURN ABBEY



7"x48" PLANK



END CAP



FLUSH STAIRNOSE



QUARTER ROUND



T MOLDING



REDUCER



OVERLAPPING STAIRNOSE



7"x48"





# WOLFEBORO

GST



7"x48" PLANK



END CAP



FLUSH STAIRNOSE



QUARTER ROUND



T MOLDING



REDUCER



OVERLAPPING STAIRNOSE



# SIZES & SHADE VARIATION

## VINYL PLANK



7"x48"

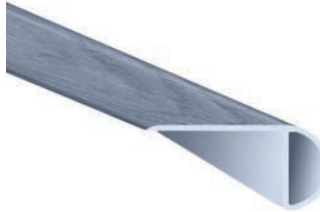
TRIM: SEE PRODUCT PAGES FOR SPECIFIC TRIM OFFERINGS



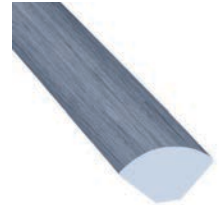
END CAP



FLUSH STAIRNOSE



OVERLAPPING STAIRNOSE



QUARTER ROUND



T MOLDING



TL MOLDING

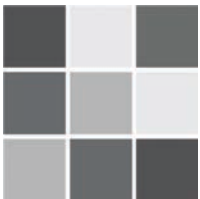


REDUCER



STAIR TREAD

## SHADE VARIATION



**V4**

Substantial Variation



# TECHNICAL SPECIFICATIONS

## SPECS

Total thickness	5MM
Core thickness	4MM
XPE Backing	1MM
Wear Layer	12 mil
Plank size	7" x 48"
ASTM F2199 (Dimensional Stability)	Passes
ASTM F1914 (Residual Indentation)	Passes (PSI Equivalent > 5,000 lbs.)
ASTM F1514 (Heat Stability)	Passes
ASTM F1515 (Light Stability)	Passes
ASTM 648 (Radiant Panel)	>0.45 watts/CM2, NFPA Class 1
ASTM E662 (nbs smoke)	<450
ASTM (E492-09 / ASTM 989-06)	72 - drop ceiling / 54 - 6" slab
ASTM E2179 (Impact Sound Reductions)	$\Delta$ IIC $\geq$ 26 dB
ASTM F925 (Resistance to Chemicals)	Passes
ASTM D5116 (VOC Requirements)	Passes < 100 mg/m
ASTM D2047 (Coefficient of Friction)	$\geq$ 0.6 (Dry)
Scratch/Scuff/Abrasion Properties	Very Good
Phillips Castor Chair @ 100 lbs.	Passes @ 25,000 cycles
Installation System	Uniclic
Certifications	FloorScore & Greenguard
Residential Warranty	Lifetime
Light Commercial Warranty	6-Year
Commercial Warranty	N/A

## USES & FEATURES

Primary Installation Type	Float Click
With Acoustic Pad	Yes
Click Type	Patented Locking System
Environmental	Greenguard Indoor Air Quality Certified
LVT Type	Rigid Core
Backing Type	1MM IXPE
Style	Wood
Warranty	Limited Residential Lifetime; 6 Year Commercial Light





## OUR SHOWROOMS

### NEW JERSEY

Dover  
Princeton  
Roselle Park  
Wall  
West Berlin

### PENNSYLVANIA

Bethlehem  
Lancaster  
Philadelphia  
Warminster

### SOUTH CAROLINA

Charleston  
Columbia

### GEORGIA

Savannah

**GARDEN STATE TILE**

Together We Can Design For Life

GSTILE.COM    @GARDENSTATETILE