

GARDEN STATE TILE

Together We Can Design For Life

MUTINA

CHYMIA





Mutina Chymia™



Mutina Chymia™

Un'affinità elettiva lega Mutina e Laboratorio Avallone da oltre vent'anni, una sintonia che ci porta a condividere l'intento di guardare alla ceramica esaltandone le qualità intrinseche. La materia è per me un tramite, è quella trasformazione alchemica in cui l'esperienza creativa si manifesta in tutta la sua complessità. Vorrei che artista e opera fossero considerati nella loro integrità, in un fare connotato da una stretta relazione tra pensiero, progetto e tecnica, qui con la sostanziale capacità metamorfica della terra da cui ha origine Chymia™.

There has been an elective affinity between Mutina and Laboratorio Avallone for over twenty years, a harmony that enables us to share our passion for the intrinsic qualities of ceramics. Materials for me are a means to an end and have come to represent that alchemical transformation when the skills of designing and creating fuse in all their complexity. I would like artists and their creations to be considered in their entirety, taking into account the close relationship between the creative thought, the design and the technique, here with the significant metamorphic ability of earth from which Chymia™ originated.

Gennaro Avallone

a special project with **Laboratorio Avallone**

MU
TIN
A

GST

Bianco e Nero



Chymia™ evoca il processo alchemico di trasformazione della materia. Una metamorfosi che prende vita attraverso un percorso nuovo, che si evolverà in un range di collezioni eterogenee di superfici e di complementi di arredo unite da un comune denominatore: il desiderio di esplorare e spingersi oltre i confini della materia. Il progetto prende vita attraverso la collaborazione con Laboratorio Avallone, realtà milanese guidata da Gennaro Avallone che si sviluppa sul terreno multidisciplinare delle arti applicate, coniugando i linguaggi di pittura e scultura per dare vita a oggetti e componenti d'arredo.

La prima espressione di questo viaggio consiste in un racconto inedito sul bianco e il nero, sviluppato con l'obiettivo di superare le referenze classiche per ridare forza e valore di originalità alla ceramica, con esiti inaspettati.

La collezione si muove tra grafica e gestualità, tra i due estremi del bianco e del nero, in cui si combinano trame segniche e materiche che tracciano luce e ombra in superficie. È il nero distintivo delle opere di Gennaro Avallone che genera ogni creazione, il nero delle patine scure, delle pitture pompeiane, delle chine cinesi, dei vasi di Paestum o della lava incandescente arsa e fusa. È un nero antico e primitivo che si identifica in un simbolismo primordiale e originario. In questo processo creativo il bianco esiste rispetto al nero ed emerge per contrapposizione con lo spazio circostante. Le due dimensioni cromatiche non sono però mai disgiunte tra loro, ma coesistono nella loro dualità.

Black & White



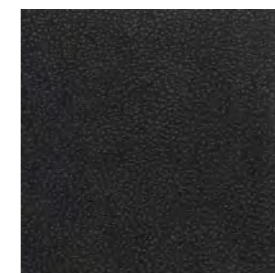
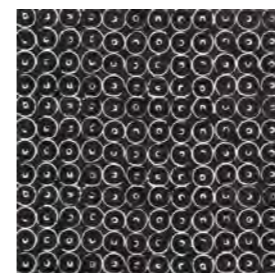
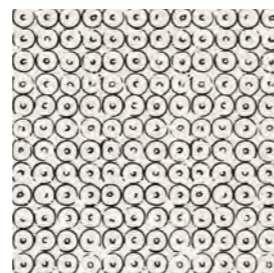
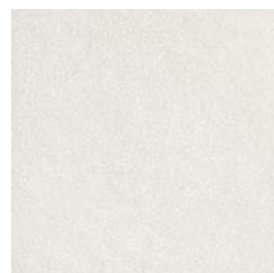
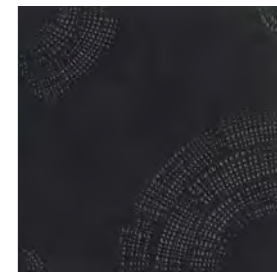
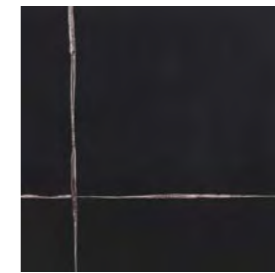
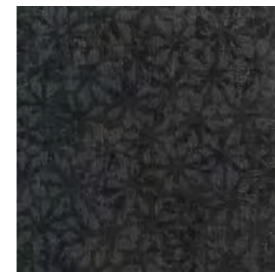
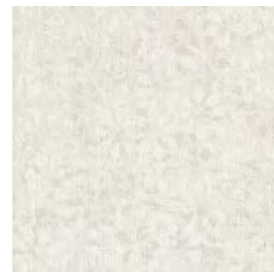
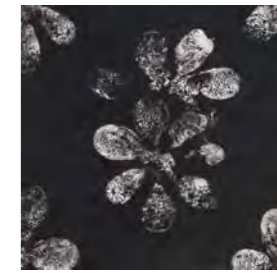
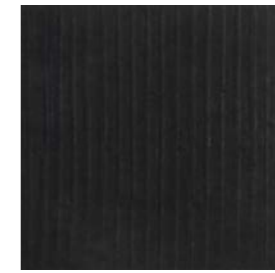
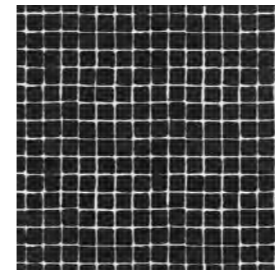
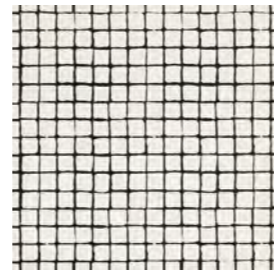
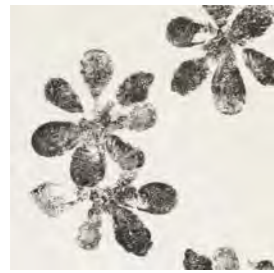
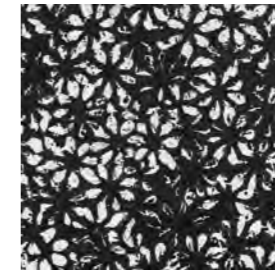
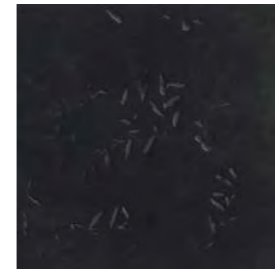
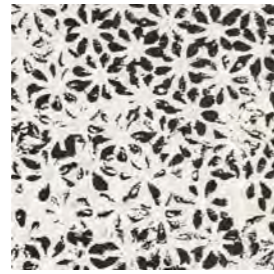
Chymia™ evokes the alchemical process of transformation of raw material. A metamorphosis that marks the beginning of a new journey, which will develop into a range of heterogeneous collections of surfaces and furniture linked by a common thread: the desire to explore and overcome the limits of matter. The project came to life through the collaboration with Laboratorio Avallone, Milano-based studio led by Gennaro Avallone, whose research reaches into the applied arts, drawing on the arts of painting and sculpture to create unique and very special objects of contemporary furnishing.

The first concrete expression of this study consists of a brand new interpretation of black and white, developed with the aim of making a break with traditional styles, to restore strength and an original quality to ceramic as a material, with unexpected outcomes.

The collection consists of a series that fluctuates between the discipline of graphic design and the expressive gestures of mark-making as well as between the two extremes of black and white, in which symbols and textures are combined to create patterns of light and shadow on the surface. Black forms the basis: in the distinctive black of Gennaro Avallone synchronicity takes place between evocation and abstraction. The shades of black originate from Pompeian paintings, Indian ink, the superb black of the vases excavated in Paestum or from the black of incandescent molten lava – there are abundant references and synergies. Black and white are never separate but co-exist.



The collection



Chymia Bianco

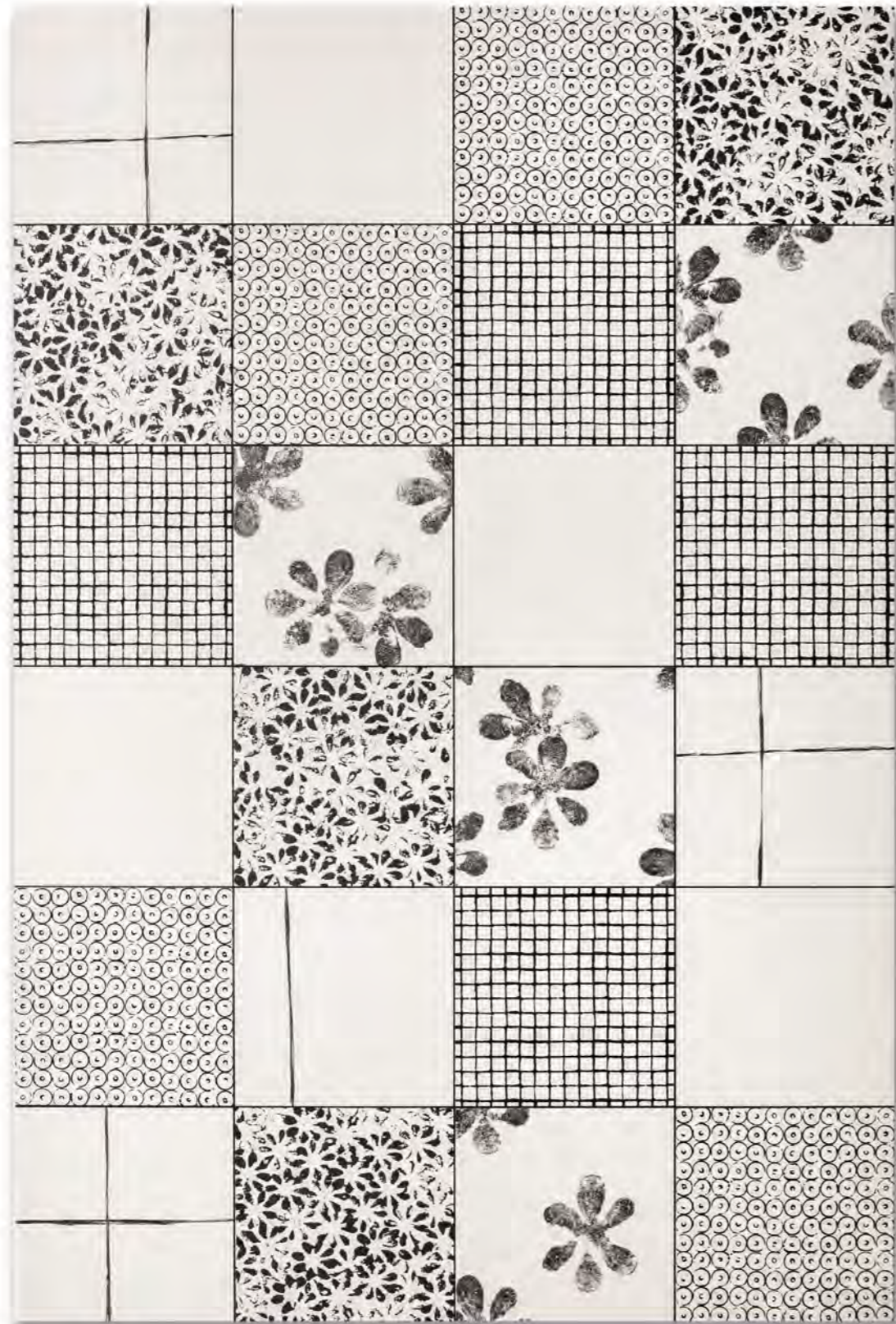
Chymia Nero



Chymia Mix 1 White



Chymia Mix 1 Black



Chymia Mix 2 White



Chymia Mix 2 Black



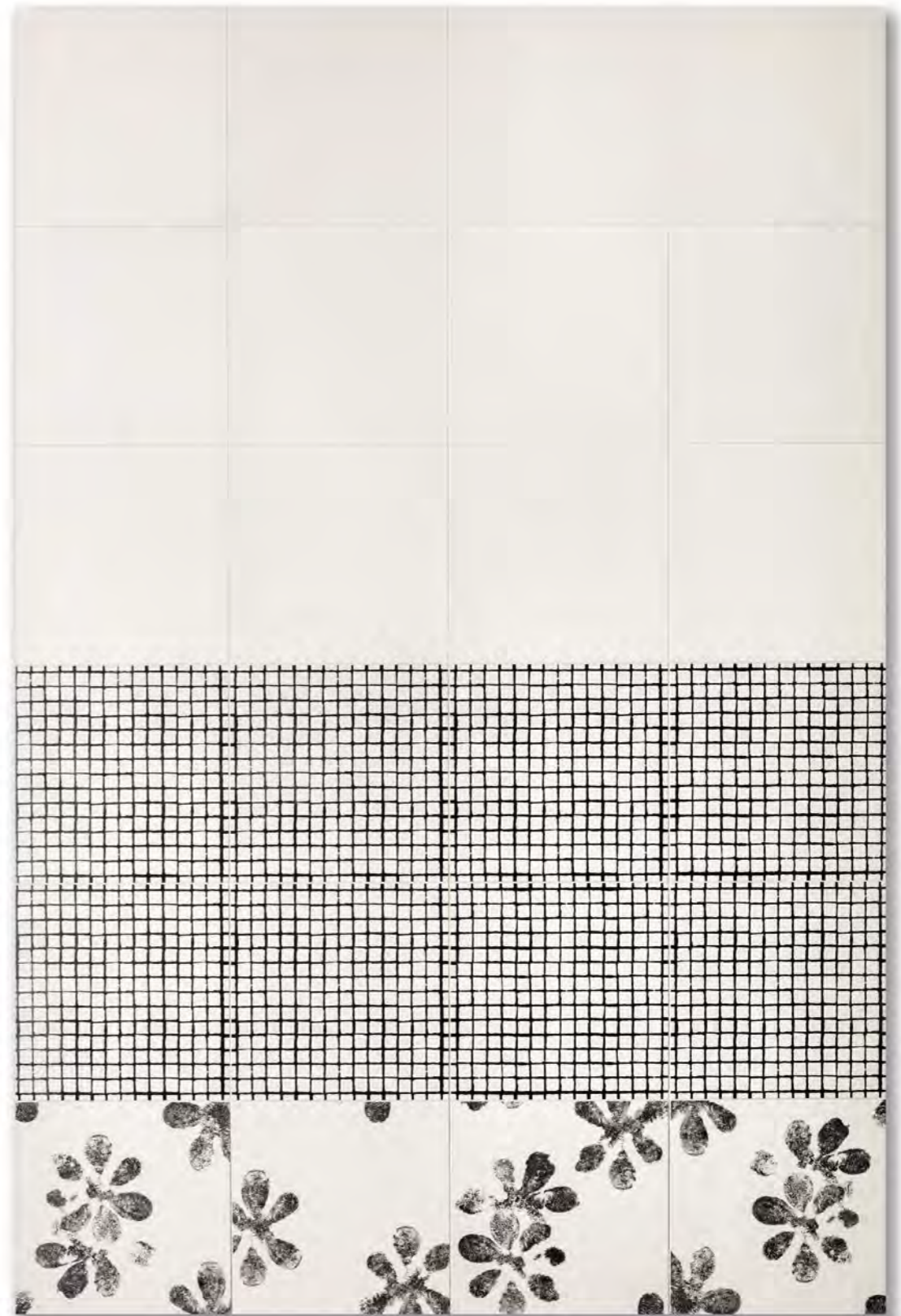
Chymia Rigo White, Juta White



Chymia Flat Black, Ophelia Black



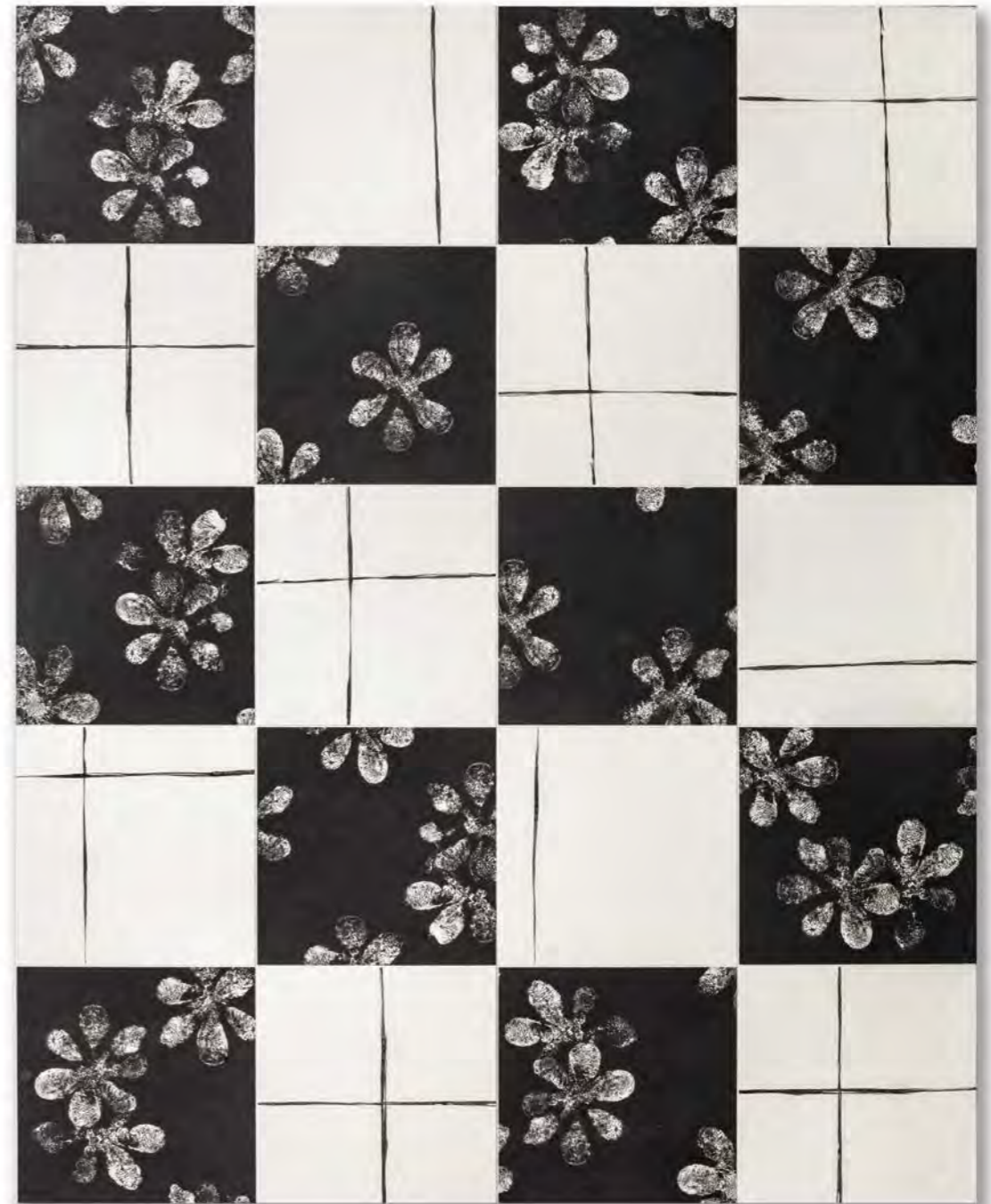
Chymia Frost Black, Impronta White



Chymia Flat White, Tassello White, Ophelia White



Chymia Teorema Black, Bloom Black



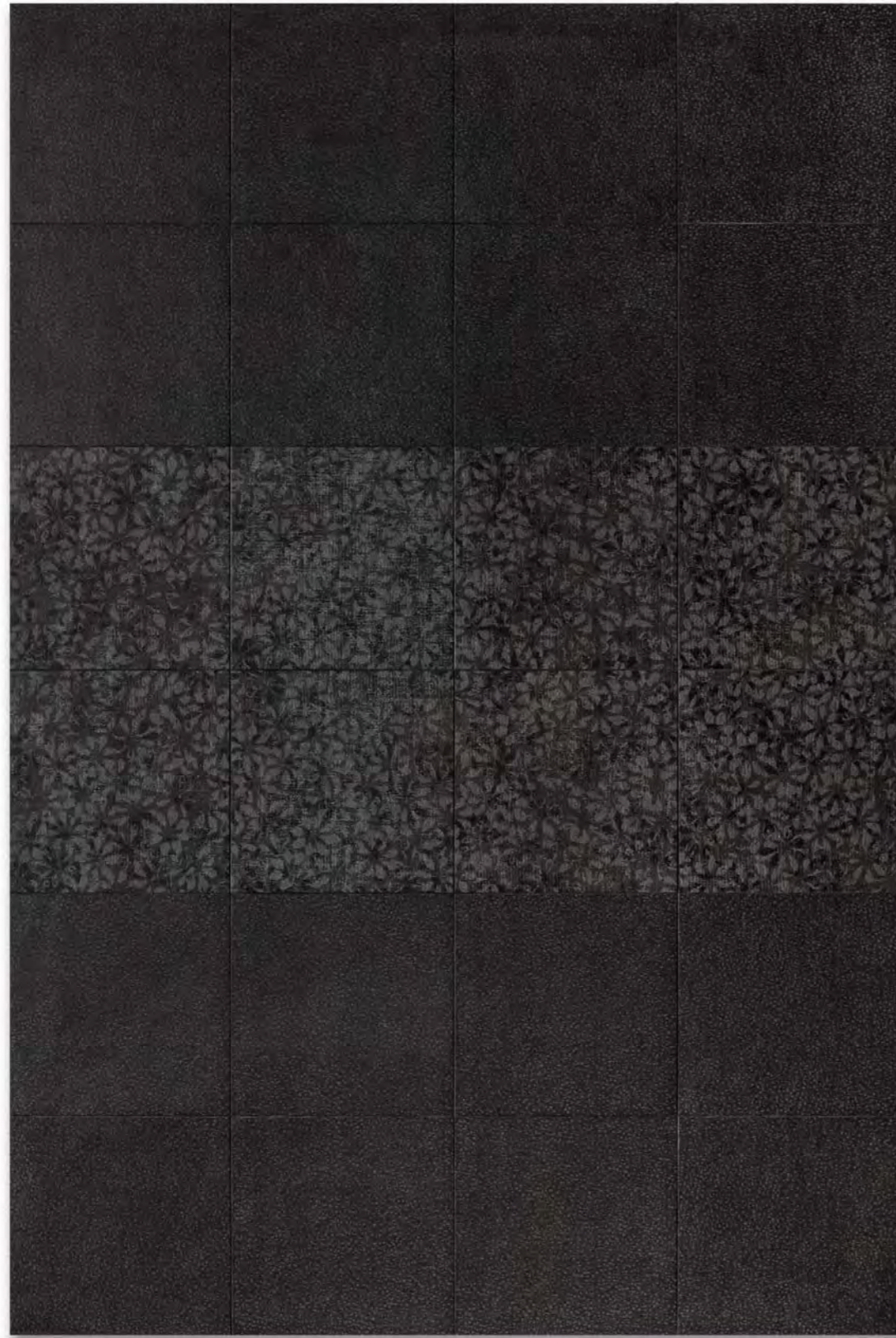
Chymia Ophelia Black, Teorema White



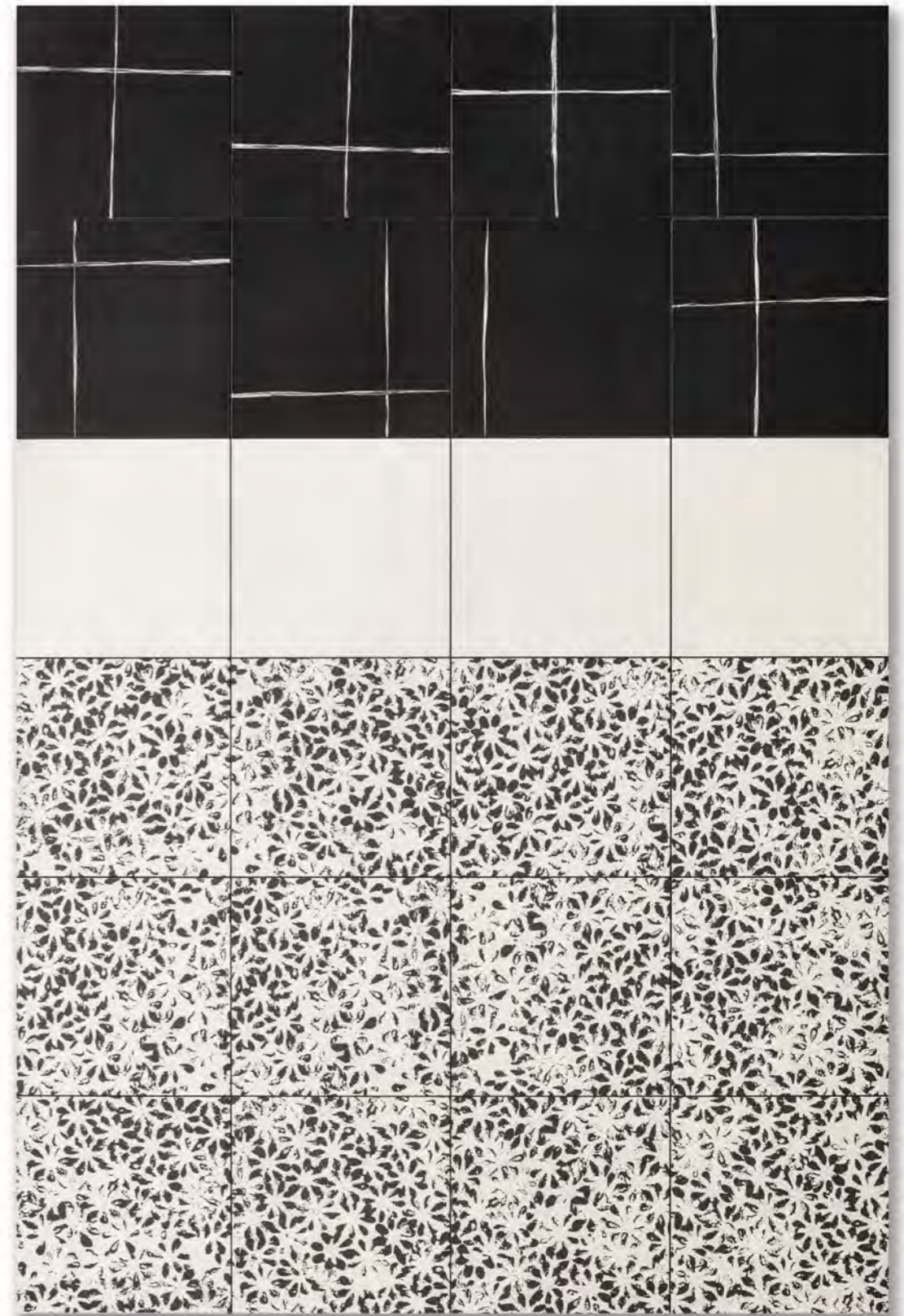
Chymia Drops White, Drops Black



Chymia Tassello Black, Ophelia White



Chymia Frost Black, Juta Black, Frost Black



Chymia Teorema Black, Flat White, Bloom White



Chymia Cosmo White, Flat Black, Cosmo Black, Flat White, Flat Black



Chymia Rigo Black, Rigo White

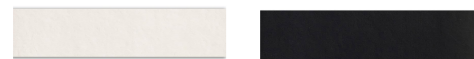


Technical features

A special project with Laboratorio Avallone
production industrial
material grès porcellanato rettificato smaltato/
 rectified glazed porcelain stoneware
size 12"x12" (30x30 cm)
thickness 10 mm
grout bianco o nero/black or white

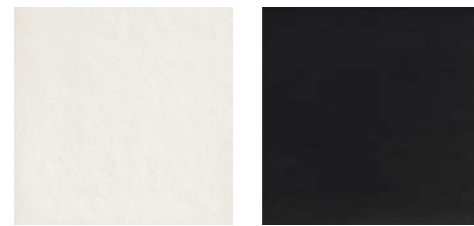
Chymia è realizzata in grès porcellanato smaltato ed è composta da 22 elementi delle dimensioni di 30x30 cm con spessore di 10 mm, ottenuti attraverso la combinazione delle strutture base con 11 grafiche, che possono essere installati in maniera assolutamente randomica. Ognuno di essi è rettificato e proposto nelle versioni Black e White. Dall'ampio range a disposizione sono stati poi selezionati quattro mix composti da 6 diversi articoli, dove il filo conduttore è il colore. Le leggere differenze nel disegno tra pezzi dello stesso pattern sono volute per ottenere una posa mai ripetitiva.

Chymia is produced in glazed porcelain stoneware and is composed by 22 elements in the single size of 30x30 cm and thickness of 10 mm, obtained by combining the principle structures with 11 textures, that can be placed randomly. They are rectified and available in both Black and White versions. Starting from the wide range, four mixes of 6 different articles (linked by the colour) have been realised. The slight differences in the pattern among the pieces are intentional to obtain a never repetitive laying effect.



White 1 1/2" x 12"
Skirting

Black 1 1/2" x 12"
Skirting



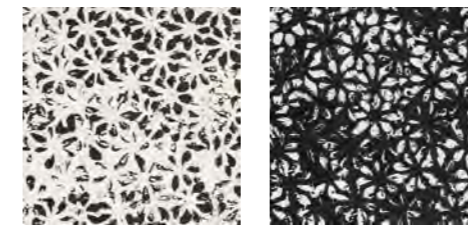
Flat White

Flat Black



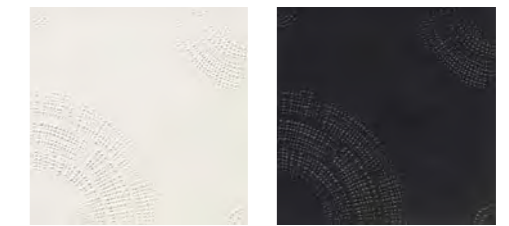
Rigo White

Rigo Black



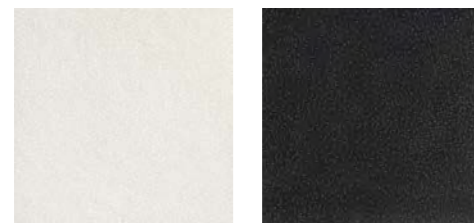
Bloom white

Bloom Black



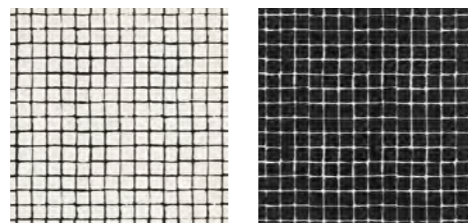
Drops White

Drops Black



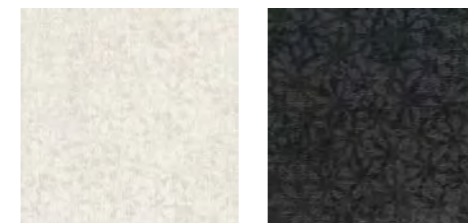
Frost White

Frost Black



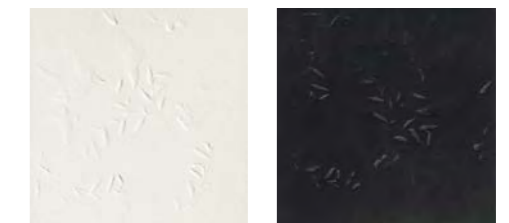
Tassello White

Tassello Black



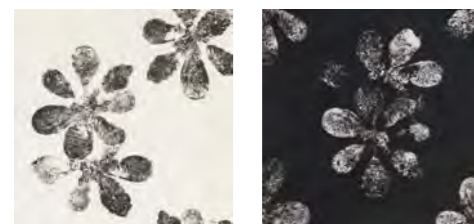
Juta White

Juta Black



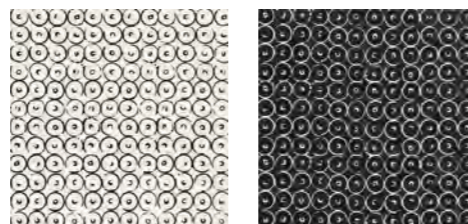
Impronta White

Impronta Black



Ophelia White

Ophelia Black



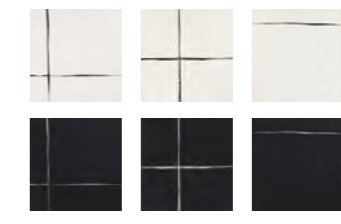
Cosmo White

Cosmo Black



Teorema White *

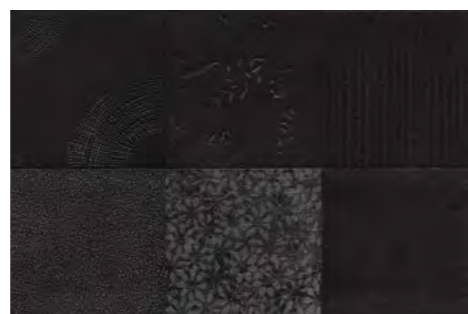
Teorema Black *



* 3 pattern miscelati random nella scatola
 3 patterns randomly mixed into the box



Mix 1 White



Mix 1 Black



Mix 2 White



Mix 2 Black

NORMA STANDARD	CARATTERISTICHE FEATURES	VALORE PRESCRITTO VALUE REQUIRED	CHYMIA
ISO 10545/2	dimensioni e qualità superficiale dimensions and surface quality		conforme in conformity with standard
	lunghezza e larghezza/ length and width	± 0,6%, ± 2mm	
	spessore/thickness	± 5%, ± 0,5mm	
	rettilineità degli spigoli/ straightness of edges	± 0,5%, ± 1,5mm	
	ortogonalità/wedging	± 0,5%, ± 2mm	
	planarità/flatness	± 0,5%, ± 2mm	
	qualità superficiale/surface quality	> 95%	
ISO 10545/3	assorbimento d'acqua water absorption	< 0,5%	0,06%
ISO 10545/4	sfuerzo di rottura breaking strenght	≥ 1300 N	conforme in conformity with standard
	modulo di rottura modulus of rupture	≥ 32 N/mm ²	
ISO 10545/9	resistenza agli sbalzi termici resistance to thermal shock	nessuna alterazione visibile no visible alteration	resiste resistant
ISO 10545/12	resistenza al gelo frost resistance	nessuna alterazione visibile no visible alteration	resiste resistant
ISO 10545/13	resistenza agli acidi e basi resistance to acids and alkalis (low and high concentration)	classe B min minimum class B	A
	resistenza ai prodotti chimici per uso domestico resistance to household cleaning agents and swimming pool chemicals	classe B min minimum class B	A
ISO 10545/14	resistenza alle macchie stains resistance	classe 3 min minimum 3	5
DIN 51130			R10
DCOF		> 0,42	0,63
LEED CERTIFICATION 4.1			20% recycled material

Packing

FORMATO SIZE	PZ-MQ PCS-SQM	PZ-SCAT PCS-BOX	MQ-SCAT SQM-BOX	SCAT-PAL BOX-PAL	KG-SCAT. KG-BOX	KG-PAL KG-PAL	MQ-PAL SQM-PAL
30-30 cm	11,11	9	0,81	32	16,90	540,81	25,92
mix 30-30 cm	11,11	12	1,08	22	22,30	490,60	23,76

CREDITS

Art direction: Alla Carta Studio
Graphic design: Matteo Pastorio
Text: Gennaro Avallone
Photography: Modo Fotografia

Printed and bound in Italy.
September 2019.

info@mutina.it - www.mutina.it
All rights reserved. © Mutina 2019



Laboratorio Avallone

The research carried out by Laboratorio Avallone reaches into the applied arts, drawing on the arts of painting and sculpture to create unique and very special objects of contemporary furnishing. A defining characteristic of these products, which has led to their international fame, is the inclination to use surfaces with very distinctive and deep textures, both engraved and embossed, highlighting the material itself. The epicentre of the design team is Gennaro Avallone, a master and experimenter, who for over twenty-five years has been continually exploring the limits and possibilities of surfaces with meticulous research that strives to create excellence. Laboratorio Avallone is now working with Mutina to create two new projects that bring out the characteristics of Gennaro's style : Chymia™, a ceramic collection that focuses on original research into black and white, and The Cylinder Glass Collection, Mutina's first lim



OUR SHOWROOMS

NEW JERSEY

Dover
Princeton
Roselle Park
Wall
West Berlin

PENNSYLVANIA

Bethlehem
Lancaster
Philadelphia
Warminster

SOUTH CAROLINA

Charleston
Columbia

GEORGIA

Savannah

GARDEN STATE TILE

Together We Can Design For Life

GSTILE.COM    @GARDENSTATETILE