
Empire

Porcelain Stone®

Distinctly American. Uniquely Crossville.



Color Palette



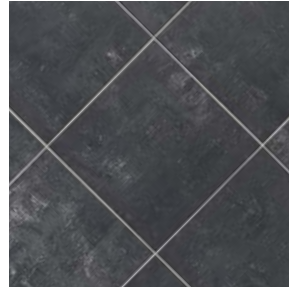
Colors



VS75 Cadet White UP - NEW



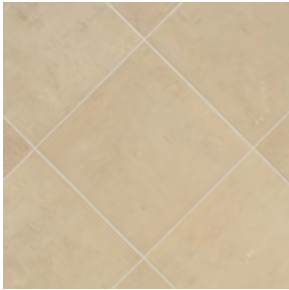
VS75 Cadet White PO - NEW



VS86 Black Swan UP



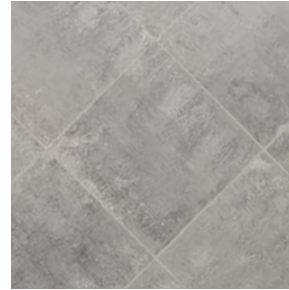
VS86 Black Swan PO



VS81 Palais Taupe UP



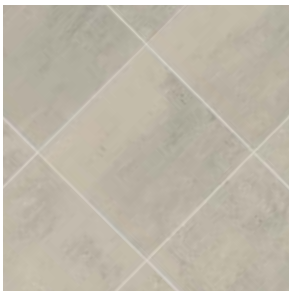
VS81 Palais Taupe PO



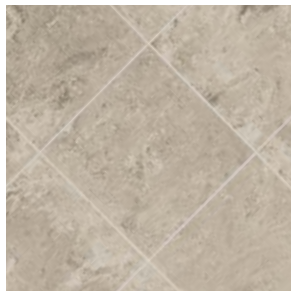
VS85 General's Grey UP



VS85 General's Grey PO



VS87 Empress Silver UP

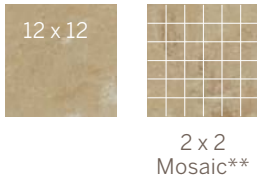
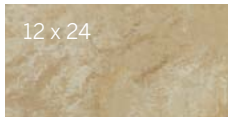


VS87 Empress Silver PO

Specifications



Sizes UP/PO Finish available in all colors



Sizes & Finishes

Field Tile

Available in all colors

Nominal (in)	Actual (mm)	Thickness (mm)	Finish
12 x 12	297 x 297	10.5	PO, UP
12 x 24	297 x 597	10.5	PO, UP
24 x 24	597 x 597	10.5	PO, UP

Note: All field tile is rectified and modular with a minimum 3mm grout joint.
Actual measurements stated in inches indicate tile is calibrated (non-rectified).
Actual measurements stated in mm indicate tile is rectified.

Mosaics and Mosaic Border

Nominal (in)	Actual (mm)	Sheet (mm)	Thickness (mm)	Finish
2 x 2 Mosaics**	47 x 47	297 x 297	10.5	UP only

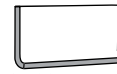
** 2 x 2 mosaics are mounted on 12 x 12 sheets with UP finish only.

Coordinating Trim

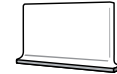
Nominal (in)	Actual (mm)	Thickness (mm)	Finish
4 x 24 Single Bullnose	97 x 597	10	PO, UP
6 x 12 Cove Base	150 x 298	10	UP
6 x 8 Cove Base Left & Right	150 x 200	10	UP



4 x 24 Single Bullnose



6 x 12 Cove Base (Universal, flat top)



6 x 8 Cove Base Corner Left



6 x 8 Cove Base Corner Right

Product Performance

Breaking Strength	>425 lbf	ASTM C648
Bond Strength	>200 psi	ASTM C482
Chemical Resistance	Unaffected	ASTM C650
Frost Resistance	Resistant	ASTM C1026
Water Absorption	<0.10%	ASTM C373
Scratch Hardness	6	Mohs Scale

Get Planked!

Our Porcelain Stone® products are available in popular plank shapes with no minimum order and quick fulfillment.

See website for more details and sizes.

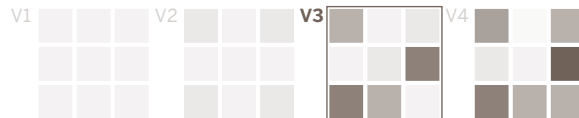


Wet Dynamic Coefficient of Friction Range

UP	0.42 - 0.52	AcuTest sm
PO	0.22 - 0.32	AcuTest sm

Shade & Texture Index

Empire has a shade variation of V3.



V1 Uniform appearance
V2 Slight Variation
V3 Moderate Variation
V4 Substantial Variation



CROSSVILLE®

Recommended Use

Empire PO & UP are recommended for interior walls and floors and exterior walls in both commercial and residential applications. **The polished finish is not recommended for wet areas where standing water may occur.** If offset pattern is required for tiles 18 inches or longer, Crossville® recommends an offset of not greater than 33%. See CrossvilleInc.com for detailed installation instructions.

Care and Maintenance

Regular cleaning is the best way to keep Empire tile looking good for years to come. Use clean, hot water (combined with a household cleaner for more aggressive cleaning). Rinse thoroughly and dry with a soft cloth. No waxes are needed. More Information regarding the care and maintenance of Crossville® products is available at CrossvilleInc.com.

Wet area use for Empire 2 x 2 Unpolished Mosaics

Crossville® produces the Empire 2 x 2 mosaics with an unpolished finish. The AcuTestsm wet Dynamic COF of Empire unpolished is ≥.42. Their small 2 x 2 size ensures frequent grout joints which provides traction and drainage. Crossville cannot control situations involving incorrect installation, improper slope to the drain for elimination of standing water and poor surface cleaning.

This information is provided so that customers may make a realistic and informed decision when comparing Empire to other tile products in wet area environments, such as residential/commercial bathrooms, showers, and interior pool decks.

Environmentally Conscious

Empire contains a 20% pre-consumer recycled content certified by Scientific Certification Systems.

For more information, visit CrossvilleInc.com/green.

Our Warranty

Crossville Inc. guarantees that its products will meet or exceed the performance specifications outlined in ANSI A137.1-2012 and in the performance data section of the Crossville, Inc. general product catalog. For complete details check our website at CrossvilleInc.com.

Information listed here is subject to change. Please refer to CrossvilleInc.com for the latest, most accurate information.

Hydrotect

Available with Hydrotect™. Crossville's revolutionary invisible coating harnesses the power of light, water and oxygen to create the best offense and defense against dirt, pollution and bacteria on any porcelain surface—walls or floors—indoors or outdoors. For complete details check our website at CrossvilleInc.com.



Trade Organizations



Environmentally Aware

