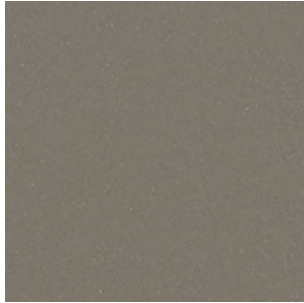


# Retro Active 2.0

## Porcelain Stone®

### Available Colors - UPS and Polished



**RET01** ▶ Antico Taupe UPS/PO



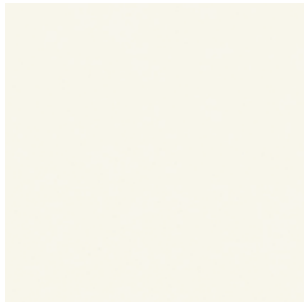
**RET02** ▶ Seal Taupe UPS/PO



**RET03** ▶ Featherstone UPS/PO



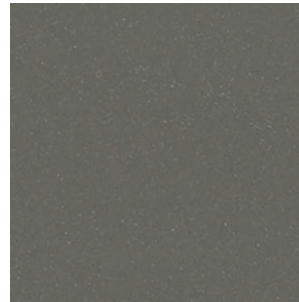
**RET04** ▶ Empress White UPS/PO



**RET05** ▶ Snow Blind UPS/PO



**RET06** ▶ Roasted Chestnut UPS/PO



**RET07** ▶ Leaden UPS/PO



**RET08** ▶ Mercurial UPS/PO



**RET09** ▶ Phantom UPS/PO



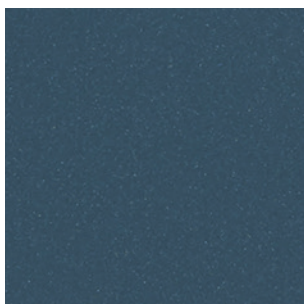
**RET10** ▶ Armor UPS/PO



**RET11** ▶ Gulf Breeze UPS/PO



**RET12** ▶ Racing Green UPS/PO



**RET13** ▶ Royal Navy UPS/PO

### Features and Benefits

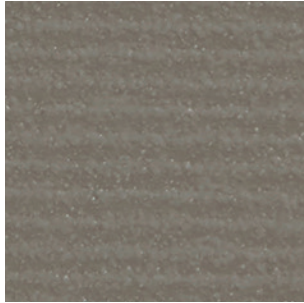
- Retro Active 2.0 includes the best-selling colors and in-demand sizes with a bold new finish option.
- 13 colors reflect a warm and cool neutral palette with exciting bright tones to enliven the mix, including super white and black.
- 8 sizes in polished and unpolished finishes and our complementary linear texture pattern pieces.
- Retro Active 2.0 pattern tiles, also in 13 colors, work in tandem or on their own to give dimension and a unique touch of texture.
- Ideal for any indoor application and exterior covered walls.
- Cross-Sheen® finish for easy cleaning
- Complementary 2 x 4 mosaic
- Made in the USA



# Retro Active 2.0

## Porcelain Stone®

### Available Patterns Colors



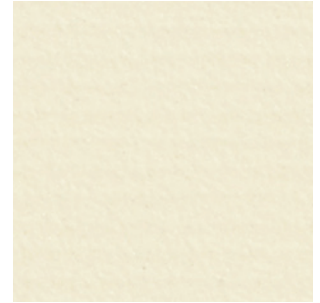
**RET01** ▶ Antico Taupe PTN



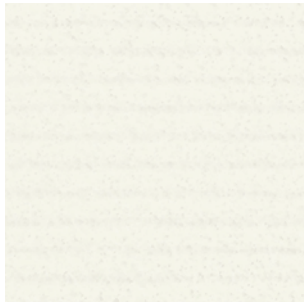
**RET02** ▶ Seal Taupe PTN



**RET03** ▶ Featherstone PTN



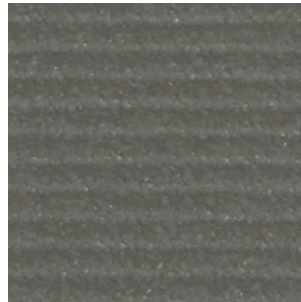
**RET04** ▶ Empress White PTN



**RET05** ▶ Snow Blind PTN



**RET06** ▶ Roasted Chestnut PTN



**RET07** ▶ Leaden PTN



**RET08** ▶ Mercurial PTN



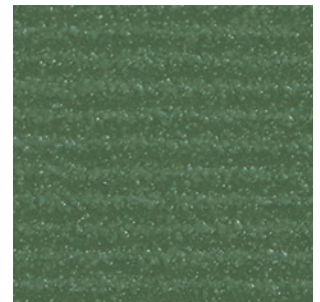
**RET09** ▶ Phantom PTN



**RET10** ▶ Armor PTN



**RET11** ▶ Gulf Breeze PTN



**RET12** ▶ Racing Green PTN



**RET13** ▶ Royal Navy PTN

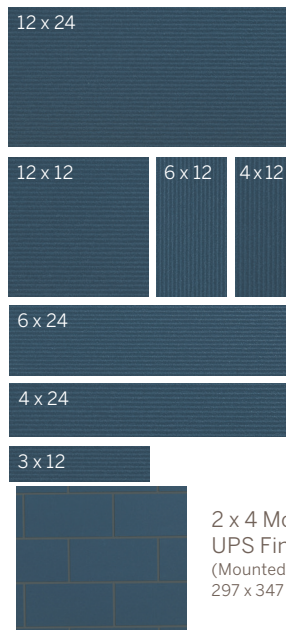


# Retro Active 2.0

## Porcelain Stone®



### Sizes (Shown in RET13)



### Sizes & Finishes

Field Tile	Available in all colors		
Nominal (in)	Actual (in)	Thickness (in)	Finish
3 x 12*	2-3/4 x 11-3/4	5/16	UPS/PO/PTN
4 x 12*	3-3/4 x 11-3/4	5/16	UPS/PO/PTN
4 x 24*	3-3/4 x 23-3/4	5/16	UPS/PO/PTN
6 x 12*	5-3/4 x 11-3/4	5/16	UPS/PO/PTN
6 x 24*	5-3/4 x 23-3/4	5/16	UPS/PO/PTN
12 x 12	11-3/4 x 11-3/4	5/16	UPS/PO/PTN
12 x 24	11-3/4 x 23-3/4	5/16	UPS/PO/PTN

Crossville recommends a grout joint of 3/16 inch.

Actual measurements stated in inches indicate tile is calibrated (non-rectified).

Actual measurements stated in mm indicate tile is rectified.

\*These sizes are not a standard stocking item. Please allow 2-4 weeks for delivery depending on availability. No set-up fee or handling charge applied.

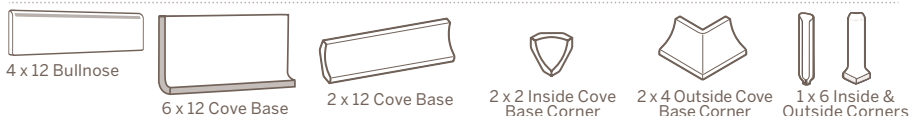
### Mosaics

Nominal (in)	Actual (in)	Thickness (in)	Finish
2 x 4 Mosaic	11-3/4 x 11-3/4	5/16	UPS

\*Mesh mounted on 297 x 347 sheet with 3mm grout joint. Coverage area is 0.97sf.

### Coordinating Trim

Nominal (mm)	Actual (in)	Thickness (in)	Finish
4 x 12 Single Bullnose	3-3/4 x 11-3/4	5/16	UPS/PO/PTN
6 x 12 Cove Base	5-7/8 x 11-3/4	3/8	UPS
2 x 12 Cove Base	1-3/4 x 11-11/16	3/8	UPS
1 x 6 Inside Corner	1 x 5-7/8	NA	UPS
2 x 2 Inside Corner	1-3/4 x 1-3/4	NA	UPS
1 x 6 Outside Corner	1 x 5-7/8	NA	UPS
2 x 4 Outside Corner	1-3/4 x 3-1/2	NA	UPS



### Product Performance

Breaking Strength	>350 lbf	ASTM C648
Bond Strength	>200 psi	ASTM C482
Chemical Resistance (UPS, PTN)	Class A	ASTM C650
Chemical Resistance (PO)	Class B	ASTM C650
Frost Resistance	Resistant	ASTM C1026
Water Absorption	<0.20%	ASTM C373
Scratch Hardness	7	Mohs Scale

### Wet Dynamic Coefficient of Friction Range

UPS	0.50 - 0.60	AcuTest <sup>sm</sup>
PO	0.31 - 0.41	AcuTest <sup>sm</sup>
PTN	0.42 - 0.52	AcuTest <sup>sm</sup>

### Shade & Texture Index

Retro Active 2.0 has a shade variation of V1.



This porcelain tile product is produced with a V1 variation. Differences among pieces from the same production run are minimal. Inspect the product upon delivery and for best results, blend tile from several cartons during installation.

### Crossville® Sample Express

Complimentary Samples are available at  
[CrossvilleInc.com/products/retro-active-2-0/](http://CrossvilleInc.com/products/retro-active-2-0/)

Samples may also be ordered through customer service by email or phone.

**Sample fulfillment & Help Line**  
Samples@CrossvilleInc.com  
1 800 221.9093

*Loose Samples for  
Architects & Designers*

### Loose Tile Samples

Sizes may vary depending on product series

Max. of 4 large field tile per order

### Replacement Chips for PSS Rack

Max. of 5, 2 x 2 chips per color

### Standard Shipping

UPS Ground



# Retro Active 2.0

Crossville, Inc.

PO Box 1168  
Crossville, TN  
38557

**Phone** 931.484.2110  
**Fax** 931.456.2956  
**E-Mail** [Crossc@CrossvilleInc.com](mailto:Crossc@CrossvilleInc.com)  
**Web** [CrossvilleInc.com](http://CrossvilleInc.com)

## Recommended Use

Retro Active 2.0 is recommended for interior floors, walls, counter tops and exterior walls in both residential and commercial applications. **If offset pattern is required for tiles 15 inches or longer, Crossville® recommends an offset of not greater than 33%.** See [CrossvilleInc.com](http://CrossvilleInc.com) for detailed installation instructions.

## Wet area use for Retro Active 2.0 Mosaics

Crossville® produces the Retro Active 2.0 mosaics with an unpolished finish. The AcuTest<sup>sm</sup> wet Dynamic COF of Retro Active 2.0 is  $\geq .50$ . Their small size ensures frequent grout joints which provides traction and drainage. Crossville cannot control situations involving incorrect installation, improper slope to the drain for elimination of standing water and poor surface cleaning.

This information is provided so that customers may make a realistic and informed decision when comparing Retro Active 2.0 to other tile products in wet area environments, such as residential/commercial bathrooms, showers, and interior pool decks.

## Environmentally Conscious

Retro Active 2.0 contains a minimum of 4% pre-consumer recycled content and is manufactured by Crossville® using processes that recycle nearly 12 million pounds of previously discarded filtrate and fired tile waste. In addition to its own fired waste recycling, Crossville also accepts and recycles reclaimed, previously installed tile through its Tile Take-Back™ Program. For more information, visit [CrossvilleInc.com/green](http://CrossvilleInc.com/green).

## Care and Maintenance

Regular cleaning is the best way to keep Retro Active 2.0 tile looking good for years to come. Use clean, hot water (combined with a household cleaner for more aggressive cleaning). Rinse thoroughly and dry with a soft cloth to prevent water spots. No waxes or sealers are needed. More information regarding the care and maintenance of Crossville products is available at [CrossvilleInc.com](http://CrossvilleInc.com).

## Our Warranty

Crossville Inc guarantees that its products will meet or exceed the performance specifications outlined in ANSI A137.1-2012 and in the performance data section of the Crossville, Inc. general product catalog. For complete details check our website at [CrossvilleInc.com](http://CrossvilleInc.com).

## Hydrotec

Our porcelain tiles are available with Hydrotec. Crossville's revolutionary invisible coating harnesses the power of light, water, and oxygen to create the best defense against dirt and pollution. Whether indoors or out, floors and walls stay cleaner, providing a superior experience in any space. For complete details check our website at [CrossvilleInc.com](http://CrossvilleInc.com).



## National Accounts

For over 20 years we have been offering Porcelain tile to commercial customers at National Accounts pricing programs with special discounts. The National Accounts department provides materials forecasting, sales support and samples.

## Exterior Cladding

Crossville's Porcelain Stone® Exterior Cladding Systems are suitable for virtually any conventional masonry application. When used in conjunction with our exterior cladding systems, Crossville's Porcelain Stone offers clear advantages: decreased construction costs, less site disturbance, low-to-zero maintenance after installation, accelerated construction schedules and greater strength than traditional masonry.

*Information listed here is subject to change. Please refer to [CrossvilleInc.com](http://CrossvilleInc.com) for the latest, most accurate information.*



**RET07** ▶ Leadon 12 x 24 UPS

## Trade Organizations



## Environmentally Aware

