

Chalk

THE CHARM  
OF COLORS,  
THE TOUCH  
OF CONCRETE.



La matericitá della superficie incontra una palette cromatica dalle tinte tenui per raccontare un'esperienza fatta di stimoli visivi, forme nuove, pattern geometrici e naturalmente colori.

The structured surface blends with a palette of neutral colours to offer a unique experience made of visual impressions, new shapes, geometric patterns and, of course, colours.



## Chalk

---

Una selezione di nuance neutre: white, silver, grey, dark, superfici ricche di sensazioni tattili dove le affascinanti irregolarità del cemento si concentrano sui bordi. A completare i formati tradizionali, 20x20 e 7,5x30 una nuova forma, il rombo, capace di generare molteplici campiture dalle grafiche diverse. Lo studio sulla decorazione mostra una nuova ricerca cromatica, che si concentra sui colori: cipria, verde salvia, blu, proposti come decori monocromatici, ma anche presenti in una nuova selezione di pattern geometrici, miscelabili fra loro per creare campiture dai toni delicati.

A selection of neutral tones: white, silver, grey, dark. Surfaces with an abundance of tactile sensations, on which the fascinating irregular texture of concrete becomes more evident on the sides. Along with the conventional sizes, 20x20 and 7.5x30, a new shape, the diamond, has been added to create multiple chromatic combinations with various patterns. The decoration highlights a detailed study on colours, focusing on different grades of shade: powder pink, green, blue and yellow, available both as monochromatic decors and in a new selection of geometric patterns that can be mixed and matched to create areas of ornamental surfaces in delicate tones.



# Chalk

FORMATI: rombo 18,7x32,4 cm, 20x20 cm, 7,5x30 cm  
 SIZES: diamond 7<sup>3/8</sup>x12<sup>3/4</sup>, 8"x8", 3"x12"

SPESSORE: rombo 18,7x32,4 cm - 20x20 cm 9 mm, 7,5x30 cm - 8,5 mm  
 THICKNESS: diamond 7<sup>3/8</sup>x12<sup>3/4</sup>, 8"x8" - 9mm, 7,5x30 cm - 8,5 mm

SUPERFICIE: naturale  
 SURFACE: matt

ASPETTO: cotto cemento  
 APPEARANCE: terracotta / concrete

COLORI: White, Silver, Grey\*, Dark\*  
 COLOURS: White, Silver, Grey\*, Dark\*

DECORI: forme geometriche multicolor  
 DECORS: multi-coloured geometric shapes



\* Alcuni articoli della collezione possono contribuire all'ottenimento dei crediti LEED.  
 \* Some items of the collection may contribute to obtaining LEED credits.



Pavimento/floor: Clk. White Rmb. - Clk. Grey Rmb. - Clk. Dark Rmb. 18,7x32,4cm (7<sup>3</sup>/<sub>8</sub>x12<sup>3</sup>/<sub>4</sub>)



gres fine porcellanato colorato in massa // fine full-body coloured porcelain stoneware

Lo spazio si scompone  
in molteplici frammenti  
di colore.  
Space breaks up  
into many fragments  
of colour.

COLORS

Pavimento/floor: Clk. Colors, Clk. Decors, Clk. White, Clk. Silver 20x20 (8"x8"), Essences Extra Walnut 30x120 (12"x48")



Rivestimento/wall: Clk. White 7,5x30 cm (3"x12")

Bancone/counter: Clk. Colors, Clk. Decors, Clk. White, Clk. Silver 20x20 (8"x8")

Pavimento/floor: Clk. Colors, Clk. Decors, Clk. White, Clk. Silver 20x20 (8"x8"), Essences Extra Walnut 30x120 (12"x48")

Clk. Colors 20x20 cm (8"x8")



Rivestimento/wall: Clk. White 7,5x30 cm (3"x12")  
Bancone/counter: Clk. Colors, Clk. Decors, Clk. White, Clk Silver 20x20 (8"x8")





Quando un piccolo assaggio scatena  
un largo sorriso...

When a small taste triggers  
a broad smile...



GREY

Rivestimento/wall: Clk. Grey 7,5x30 (3"x12")  
Bancone/counter: Ton. White 7,5x30 (3"x12")





Rivestimento/wall: Clk. Grey 7,5x30 (3"x12")

Bancone/counter: Ton. White 7,5x30 (3"x12")

Pavimento/floor: Clk. Grey Rmb, Clk. Dark Rmb 18,7x32,4cm (7<sup>3</sup>/<sub>8</sub>x12<sup>3</sup>/<sub>4</sub>)

Pavimento/floor: C1k. Grey Rmb, C1k. Dark Rmb 18,7x32,4cm (7<sup>3/8</sup>x12<sup>3/4</sup>)



Vitamine e fantasia.  
Vitamins and fantasy.

---

---

DARK

Rivestimento/wall: Clk. Dark 7,5x30 cm (3"x12")



Rivestimento/wall: Clk. Dark 7,5x30 cm (3"x12")

Bancone/counter: Clk. White Rmb, Clk. Silver Rmb, Clk. Grey Rmb 18,7x32,4cm (7<sup>3</sup>/<sub>8</sub>x12<sup>3</sup>/<sub>4</sub>)

Pavimento/floor: Clk. White Rmb 18,7x32,4cm (7<sup>3</sup>/<sub>8</sub>x12<sup>3</sup>/<sub>4</sub>)

Clk. White Rmb 18,7x32,4cm (7<sup>3</sup>/<sub>8</sub>x12<sup>3</sup>/<sub>4</sub>)



Bancone/counter: Clk. White Rmb, Clk. Silver Rmb, Clk. Grey Rmb 18,7x32,4cm (7<sup>3</sup>/<sub>8</sub>x12<sup>3</sup>/<sub>4</sub>)  
Pavimento/floor: Clk. White Rmb 18,7x32,4cm (7<sup>3</sup>/<sub>8</sub>x12<sup>3</sup>/<sub>4</sub>)



Classico e contemporaneo ...  
il tè delle cinque.  
Classic and contemporary ...  
Five o'clock tea.

---

---

COLORS



Rivestimento/wall: Clk. Grey Rmb, Clk. Colors Rmb. 18,7x32,4cm (7<sup>3/8</sup>x12<sup>3/4</sup>)  
 Pavimento/floor: Clk. Grey 20x20 cm (8"x8"), Street Light Nat. Rett. 75x150 (30"x60")



WELCOME IT'S A TEA TIME



Green Tea	1	80-90°C	2-3 min	1-200ml
Black Tea	1	70-80°C	2-3 min	200ml
White Tea	2.5	70-75°C	2-3 min	80ml
Oolong	1	80-90°C	2-3 min	200ml
Herbal Tea	3.5	70-75°C	2-3 min	200ml
Flavored Tea	1	80-90°C	2-3 min	200ml
Matcha	1	80-90°C	1-2 min	80ml
Ice Tea	1	70-80°C	2-3 min	200ml





Rivestimento/wall: Clk. Grey Rmb, Clk. Colors Rmb. 18,7x32,4cm (7<sup>3</sup>/<sub>8</sub>x12<sup>3</sup>/<sub>4</sub>)  
Pavimento/floor: Clk. Grey 20x20 cm (8"x8"), Street Light Nat. Rett. 75x150 (30"x60")

Clk. Grey 7,5x30 (3"x12")

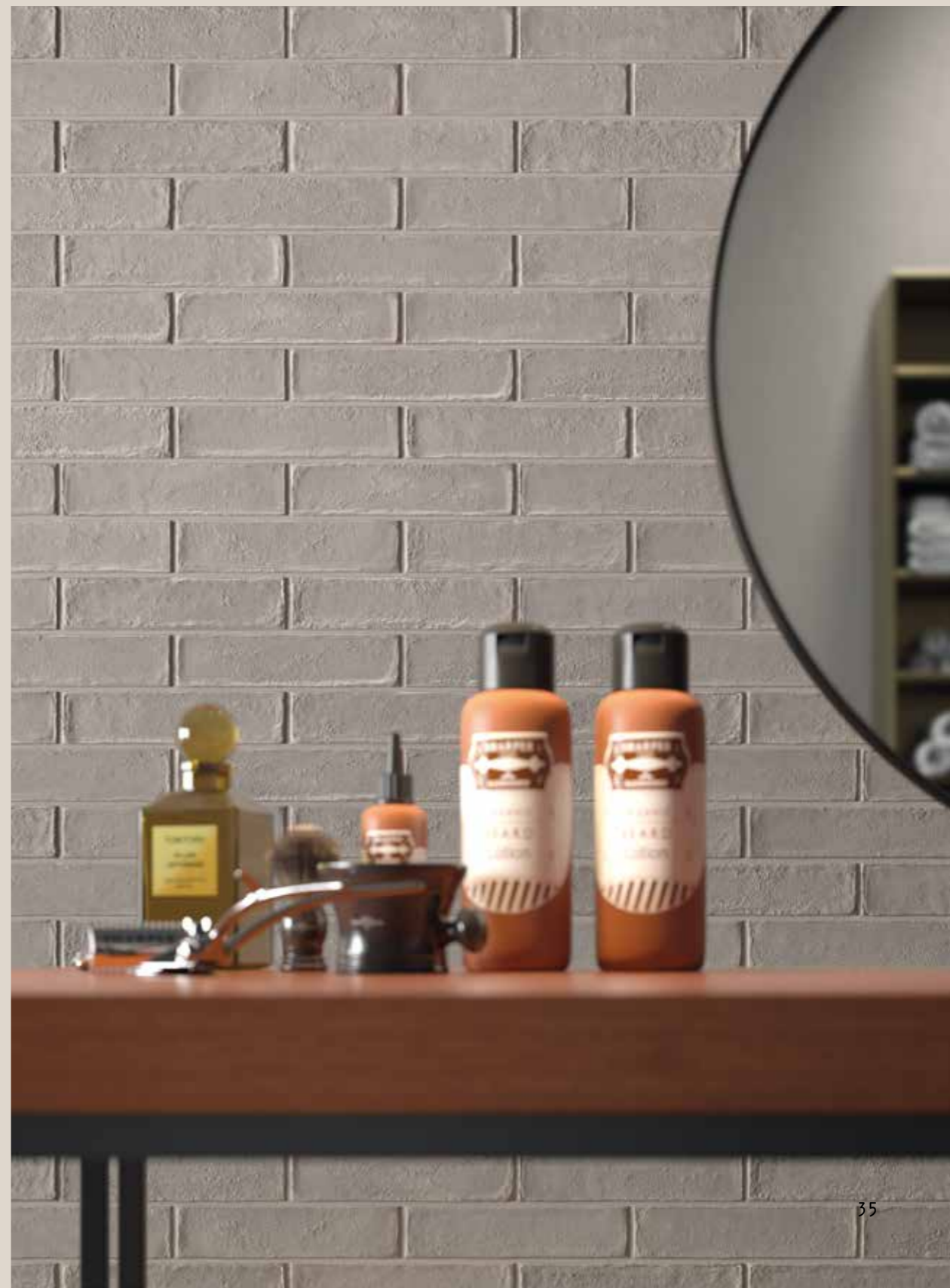


Un nuovo look per stupire.  
A new look that astonishes.



SILVER

Rivestimento/wall: Clk. Silver 7,5x30 (3"x12")



Rivestimento/wall: Clk. Silver 7,5x30 (3"x12")

Volume/volume: Type Dark 120x240 (48"x96")

Pavimento/floor: Clk. Silver Rmb, Clk. Grey Rmb, Clk. Dark Rmb 18,7x32,4cm (7<sup>3</sup>/<sub>8</sub>"x12<sup>3</sup>/<sub>4</sub>")

n°35  
men & salon  
GENTLEMEN'S HAIRCUTS

Rivestimento/wall: Clk. Grey 7,5x30 (3"x12")

Pavimento/floor: Clk. Silver Rmb, Clk. Grey Rmb, Clk. Dark Rmb 18,7x32,4cm (7<sup>3</sup>/<sub>8</sub>x12<sup>3</sup>/<sub>4</sub>)



Accarezzati da pensieri positivi,  
coccolati da uno spuntino condiviso.  
Caressed by positive thoughts,  
pampered by a snack in good company.



SILVER

Rivestimento/wall: Clk. Silver 7,5x30 (3"x12")





play

BRACEFAST  
ITEMS  
Full breakfast 11.00  
Breakfast 9.00  
Bruschetta 4.00  
Cappuccino 2.00  
Espresso 1.50  
Milkshake 4.00  
Smoothie 3.50  
Fruit Salad 2.50

Rivestimento/wall: Clk. Silver 7,5x30 (3"x12")  
Bancone/counter: Mai.Bianco 10x10 (4"x4")  
Pavimento/floor: Clk. White Rmb, Clk. Grey Rmb, Clk. Dark Rmb 18,7x32,4cm (7<sup>3</sup>/<sub>8</sub>x12<sup>3</sup>/<sub>4</sub>)

Rivestimento/wall: Clk. Silver 7,5x30 (3"x12")  
Bancone/counter: Mai.Bianco 10x10 (4"x4")  
Pavimento/floor: Clk. White Rmb, Clk. Grey Rmb, Clk. Dark Rmb 18,7x32,4cm (7<sup>3</sup>/<sub>8</sub>x12<sup>3</sup>/<sub>4</sub>)



Aglione, olio e peperoncino.  
Garlic, oil and chili pepper.



DECORI MIX

Rivestimento/wall: Clk. Decors 20x20 (8"x8"), Clk. Silver 20x20 (8"x8")





Rivestimento/wall: Clk. Decors 20x20 (8"x8"), Clk. Silver 20x20 (8"x8")  
Pavimento/floor: Clk. Decors 20x20 (8"x8"), Clk. Silver 20x20 (8"x8")

Clk. Silver 20x20 (8"x8")



Rivestimento/wall: Clk. Decors 20x20 (8"x8"), Clk. Silver 20x20 (8"x8")  
Pavimento/floor: Clk. Decors 20x20 (8"x8"), Clk. Silver 20x20 (8"x8")



~ Chalk

TECNOLOGIA

gres fine porcellanato colorato in massa

TECNOLOGY

fine full-body coloured porcelain stoneware

---

FORMATI

rombo 18,7x32,4 cm, 20x20 cm, 7,5x30 cm

SIZES

diamond 7<sup>3</sup>/<sub>8</sub>x12<sup>3</sup>/<sub>4</sub>, 8"x8", 3"x12"

---

SPESSORE

9 mm - 8,5 mm

THICKNESS

9 mm - 8,5 mm

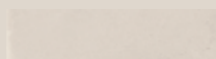
pavimento e rivestimento / floor and wall  
spessore / thickness: 9 mm - 8,5 mm



E754  
Clk. White rmb  
18,7x32,4 cm - 7<sup>3</sup>/<sub>8</sub>x12<sup>3</sup>/<sub>4</sub>



E633  
Clk. White  
20x20 cm - 8"x8"



E629  
Clk. White  
7,5x30 cm - 3"x12"



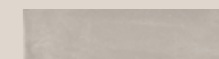
V2 Variazione minima / Slight variation



E755  
Clk. Silver rmb  
18,7x32,4 cm - 7<sup>3</sup>/<sub>8</sub>x12<sup>3</sup>/<sub>4</sub>



E634  
Clk. Silver  
20x20 cm - 8"x8"



E630  
Clk. Silver  
7,5x30 cm - 3"x12"



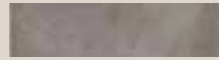
pavimento e rivestimento / floor and wall  
spessore / thickness: 9 mm - 8,5 mm



E756  
Clk. Grey rmb  
18,7x32,4 cm - 7<sup>3</sup>/<sub>8</sub>x12<sup>3</sup>/<sub>4</sub>



E635  
Clk. Grey  
20x20 cm - 8"x8"



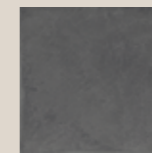
E631  
Clk. Grey  
7,5x30 cm - 3"x12"



V2 Variazione minima / Slight variation



E757  
Clk. Dark rmb  
18,7x32,4 cm - 7<sup>3</sup>/<sub>8</sub>x12<sup>3</sup>/<sub>4</sub>



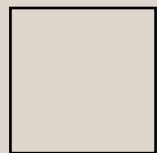
E636  
Clk. Dark  
20x20 cm - 8"x8"



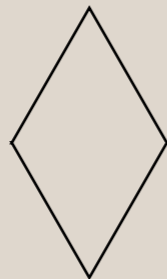
E632  
Clk. Dark  
7,5x30 cm - 3"x12"



pavimento e rivestimento / floor and wall  
spessore / thickness: 9 mm - 8,5 mm



\*E638  
Clk. Colors  
20x20 cm - 8"x8"



\*E758  
Clk. Colors rmb  
18,7x32,4 cm - 7<sup>3</sup>/<sub>8</sub>x12<sup>3</sup>/<sub>4</sub>



V2 Variazione minima / Slight variation

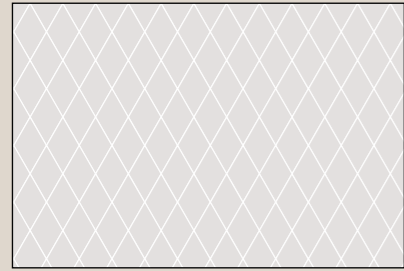


\*E637  
Clk. Decors  
20x20 cm - 8"x8"

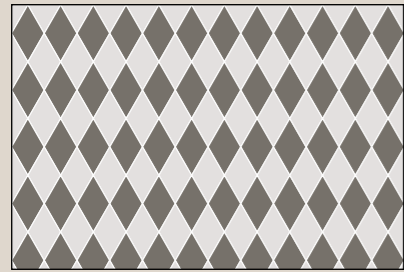


\*Inscatolamento controllato random dei soggetti.  
\*Controlled random packing of subjects.

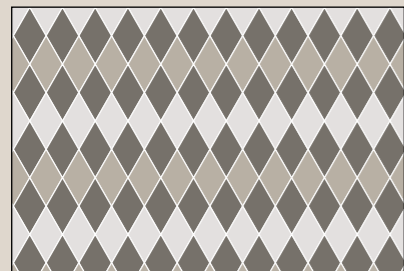
◇ MODULO A



◇ 100%

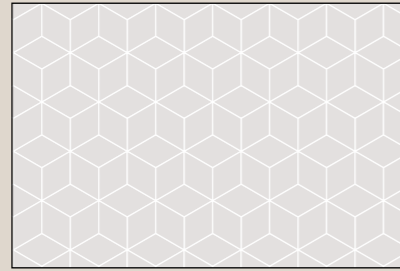


◇ 50% ◇ 50%

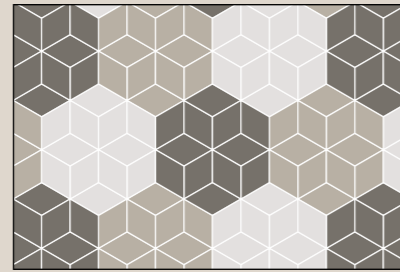


◇ 25% ◇ 25% ◇ 50%

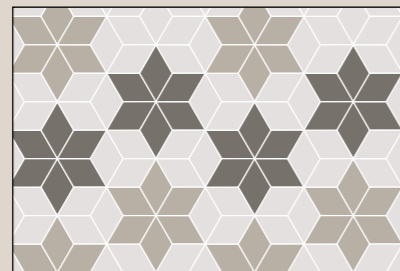
◇ MODULO B



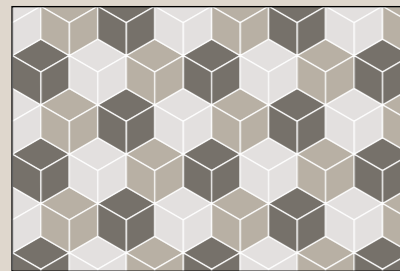
◇ 100%



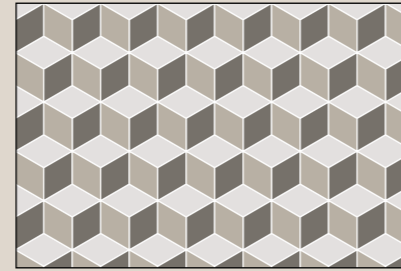
◇ 33,3% ◇ 33,3% ◇ 33,3%



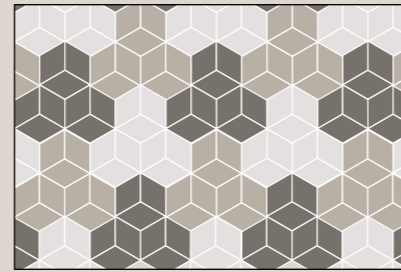
◇ 45% ◇ 32% ◇ 23%



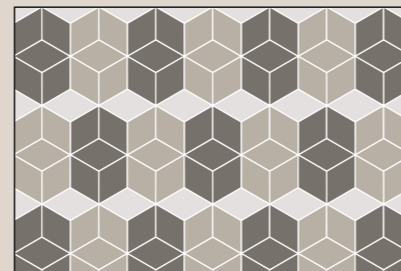
◇ 33,3% ◇ 33,3% ◇ 33,3%



◇ 33,3% ◇ 33,3% ◇ 33,3%

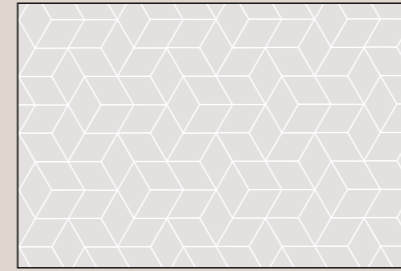


◇ 33,3% ◇ 33,3% ◇ 33,3%

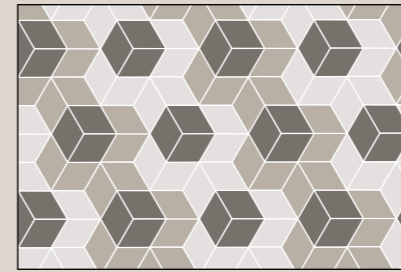


◇ 10% ◇ 45% ◇ 45%

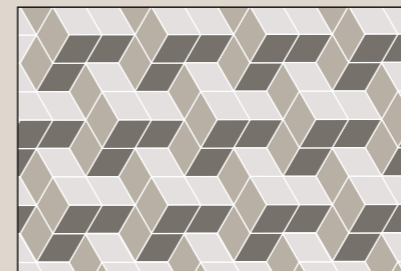
◇ MODULO C



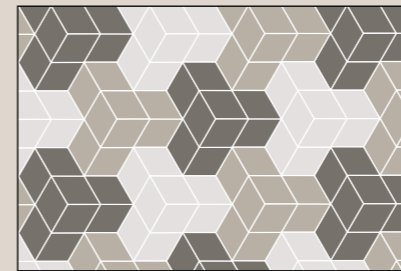
◇ 100%



◇ 33,3% ◇ 33,3% ◇ 33,3%

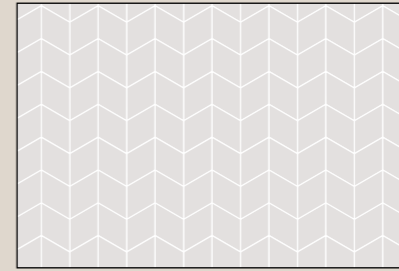


◇ 33,3% ◇ 33,3% ◇ 33,3%

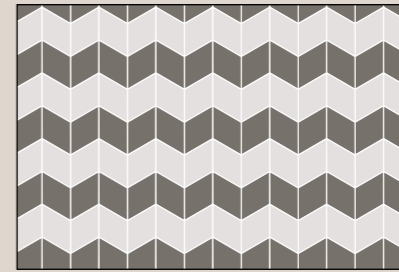


◇ 33,3% ◇ 33,3% ◇ 33,3%

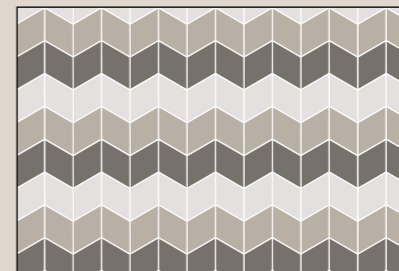
◇ MODULO D



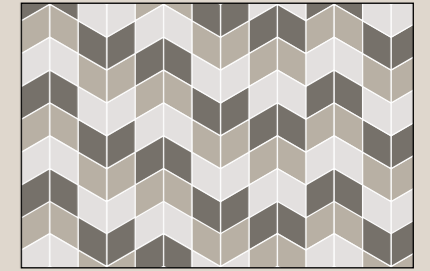
◇ 100%



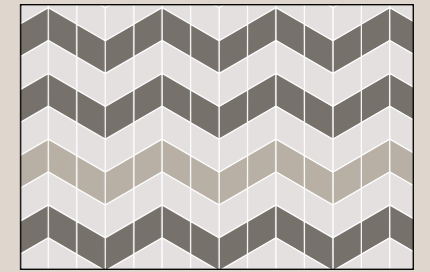
◇ 50% ◇ 50%



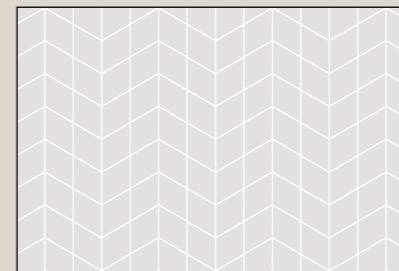
◇ 33,3% ◇ 33,3% ◇ 33,3%



◇ 33,3% ◇ 33,3% ◇ 33,3%





◇ 50% ◇ 17% ◇ 33%



◇ 100%





Caratteristiche Tecniche / Technical Characteristics								
Caractéristiques Techniques / Technische Anforderungen / Características técnicas / Технические характеристики								
EN 14411 (ISO 13006) Appendice G Gruppo Bla UGL, Ev ≤ 0,5%								
Gres fine porcellanato colorato in massa / Fine full-body coloured porcelain stoneware								
Grès cérame coloré pleine masse / Durchgefärbtes Feinsteinzeug / Gres fino porcelánico coloreado en toda su masa / Керамогранит окрашенный в массе								
Rombo 18,7x32,4 - Rhombus 7 <sup>9</sup> / <sub>16</sub> x12 <sup>3</sup> / <sub>4</sub> 20x20 Nat - 8"x8"	± 9 mm	Norma Norm Norme Norma Norma	Requisiti per misura nominale N. Requirement for nominal size N. Conditions requises pour obtenir mesure nominale N. Voraussetzungen für das Nominalmaß N. Requisitos para el tamaño nominal N. Требования к номинальному размеру N.	Valore medio Average value. Valeur Moyenne Durchschnittswert Valor Mediano Среднее значение.				
7,5x30 Nat. - 3"x12"	± 8,5 mm		7 cm ≤ N < 15 cm	N ≥ 15 cm	CHALK			
			(mm)	(%)	(mm)	Rombo Rhombus	20x20 8"x8"	7,5x30 3"x12"
Caratteristiche di sicurezza. Safety characteristics. Caractéristiques de sécurité. Sicherheitsmerkmale. Características de seguridad. Характеристики безопасности.		Coefficiente di attrito dinamico. Dynamic friction coefficient. Coefficient de frottement dynamique. Dynamischer Reibungskoeffizient. Coeficiente de rozamiento dinámico. Устойчивость к скольжению при движении.	B.C.R.A. μ > 0,40	D.M.I. Giugno 1989 n. 236 (μ > 0,40)	> 0,40	> 0,40	Non applicable. Not applicable. Non applicable. Nicht anwendbar. No applicable. Не применяется.	
		Coefficiente di attrito dinamico. Dynamic friction coefficient. Coefficient de frottement dynamique. Dynamischer Reibungskoeffizient. Coeficiente de rozamiento dinámico. Устойчивость к скольжению при движении.	ANSI A137.1:2012 (BOT 3000)	≥ 0,42 Bagnato ≥ 0,42 Wet	≥ 0,42 WET	≥ 0,42 WET	Non applicable. Not applicable. Non applicable. Nicht anwendbar. No applicable. Не применяется.	
		Resistenza allo scivolamento. Slip resistance. Résistance au glissement. Rutschfestigkeit. Resistencia al deslizamiento. Сопротивление скольжению.	BS7976-2:2002 Pendulum Testers	Bassa potenzialità di scivolamento. Low slip risk. ≥ 36 Asciutto / ≥ 36 Bagnato ≥ 36 Dry / ≥ 36 Wet	≥ 36 DRY	≥ 36 DRY	Non applicable. Not applicable. Non applicable. Nicht anwendbar. No applicable. Не применяется.	
		Classificazione antiscivolo. Non-slip classification. Classification antidérapement. Trittsicherheitsklassen (Barfuß). Clasificación antideslizamiento. Классификация противоскользящей плитки.	DIN 51130	In funzione dell'ambiente o della zona di lavoro Based on the environment or on the working area	R10	R10	Non applicable. Not applicable. Non applicable. Nicht anwendbar. No applicable. Не применяется.	
		Classificazione antiscivolo (Piedi nudi). Non-slip classification (Barefoot). Classification antidérapement (Pieds nus). Trittsicherheitsklassen. Clasificación antideslizamiento (Pies descalzos). Классификация противоскользящей плитки (Босые ноги).	DIN 51097	Secondo la classificazione indicata dal fabbricante Manufactured to state classification	A	A	Non applicable. Not applicable. Non applicable. Nicht anwendbar. No applicable. Не применяется.	
Caratteristiche chimiche. Chemical characteristics. Caractéristiques chimiques. Chemische Eigenschaften. Características químicas. Химические свойства.		Resistenza ai prodotti chimici di uso domestico ed agli additivi per piscina. Resistance to household chemicals and swimming pool salts. Résistance aux produits chimiques à usage domestique et aux adjuvants pour piscines. Beständigkeit gegen Haushaltschemikalien und Badewasserzusätze. Resistencia a los productos químicos de uso doméstico y a los aditivos para piscinas. Устойчивость к воздействию химических средств домашнего использования и химических добавок для бассейна.		Classe UB/GB min Class UB/GB min	UA	UA	UA	
		Resistenza a basse concentrazioni di acidi e alcali. Resistance to low concentrations of acids and alkalis. Résistance aux acides et aux alcalis à basse concentration. Beständigkeit gegen niedrigkonzentrierte Säuren und Laugen. Resistencia a bajas concentraciones de ácidos y álcalis. Устойчивость к кислотам и щелочам низкой концентрации.	ISO 10545-13	Valore dichiarato (ISO 13006: secondo la class. indicata dal fabbricante). Declared value (ISO 13006: Manufacturer to state classification).	ULA	ULA	ULA	
		Resistenza ad alte concentrazioni di acidi e alcali. Resistance to high concentrations of acids and alkalis. Résistance aux acides et aux alcalis à haute concentration. Beständigkeit gegen hochkonzentrierte Säuren und Laugen. Resistencia a altas concentraciones de ácidos y álcalis. Устойчивость к кислотам и щелочам высокой концентрации.		Valore dichiarato (ISO 13006: metodo di prova disponibile). Declared value (ISO 13006: Test method available).	UHA	UHA	UHA	
		Resistenza alle macchie. Resistance to stains. Résistance aux taches. Fleckenbeständigkeit. Resistencia a las manchas. Тойкость к образованию пятен.	ISO 10545-14	Valore dichiarato (ISO 13006: metodo di prova disponibile). Declared value (ISO 13006: Test method available).	Pulibile. Cleanable. Nettoyable. Kann gereinigt werden. Limpiable. Моющийся.			

\* Per piastrelle rettangolari, che abbiano il lato maggiore L ≥ 60 cm e rapporto tra i lati ≥ 3, la misurazione della ortogonalità deve venire condotta solo sul lato corto.  
For oblong tiles with L ≥ 60 cm and ratio length/width L/W ≥ 3, measurement of rectangularity only on short edges.

Ceramiche Marca Corona S.p.A. si riserva il diritto di apportare in qualsiasi momento modifiche o variazioni a quanto descritto in questo documento.  
Ceramiches Marca Corona S.p.A. reserves the right to modify the above specifications at any time without notice.  
Ceramiches Marca Corona S.p.A. se réserve le droit d'apporter à tout moment des modifications ou des variations à la description contenue dans ce document.  
Cerámicas Marca Corona S.p.A. se reserva el derecho de modificar o variar en cualquier momento el contenido de este documento.  
Ceramiches Marca Corona S.p.A. оставляет за собой право вносить в любой момент изменения в содержание настоящего документа.

gres fine porcellanato colorato in massa / fine full-body coloured porcelain stoneware

Pack.	Thickness	Pcs/Box	Mq/Box	Kg/Box	Box/Pallet	Mq/Pallet	Kg/Pallet
rombo 18,7x32,4	9 mm	29	0,87853	16,40	48	42,16944	787,20
20x20	9 mm	30	1,20	23,90	56	67,20	1338
7,5x30	8,5 mm	48	1,08	20,52	48	51,84	985

### stucco / grout line

Si consiglia di utilizzare uno stucco in tono con il materiale ceramico.  
We advise using a grout that matches the colour of the ceramic material.

colori / colors	stucco / grout Kerakoll	stucco / grout Mapei
Clk. White	51 Silver	103 Moon White
Clk. Silver	03 Grigio Perla	110 Manhattan 2000
Clk. Grey	04 Grigio Ferro	113 Grigio Cemento
Clk. Dark	05 Antracite	114 Antracite
Clk. Colors	02 Grigio Luce / 03 Grigio Perla	111 Grigio Argento / 110 Manhattan 2000
Clk. Decors	02 Grigio Luce / 03 Grigio Perla	111 Grigio Argento / 110 Manhattan 2000





### pezzi speciali / special pieces



Battiscopa 20 4,6x20 cm - 1.8"x8"

E673 Clk. White  
E674 Clk. Silver  
E675 Clk. Grey  
E676 Clk. Dark

### variazione cromatica / shade variation: Chalk V2

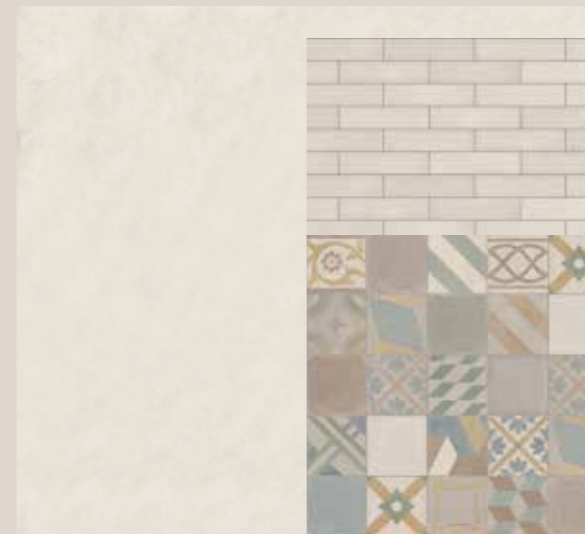
 V1	 V2	 V3	 V4
ASPETTO UNIFORME: le differenze tra piastrelle dello stesso lotto produttivo sono minime.	VARIAZIONE MINIMA: colori simili presentano diverse texture e/o motivi superficiali.	VARIAZIONE MODERATA: Mentre i colori presenti su una singola piastrella sono indicativi dei colori presenti sulle altre piastrelle, il numero dei colori presenti su ogni singolo pezzo può variare significativamente.	VARIAZIONE SOSTANZIALE: Differenze di colore casuali tra le piastrelle, ogni piastrella può avere colori completamente differenti dalle altre. L'effetto finale della posa è unico e irripetibile.
UNIFORM APPEARANCE: Differences among pieces from the same production run are minimal.	SLIGHT VARIATION: Clearly distinguishable texture and/or pattern within similar colors.	MODERATE VARIATION: While the colors present on a single piece of tile will be indicative of the colors to be expected on the other tiles, the amount of colors on each piece may vary significantly.	SUBSTANTIAL VARIATION: Random color differences from tile to tile, so that one tile may have totally different colors from that on other tiles. Thus, the final installation will be unique.

SUGGERIMENTI DI POSA  
INSTALLATION TIPS

---



pag. 11



**Rivestimento/wall:**

E629 Clk. White 7,5x30 cm (3"x12")

**Bancone/Counter:**

E638 Clk. Colors 20x20 (8"x8")  
E637 Clk. Decors 20x20 (8"x8")  
E633 Clk. White 20x20 (8"x8")  
E634 Clk. Silver 20x20 (8"x8")

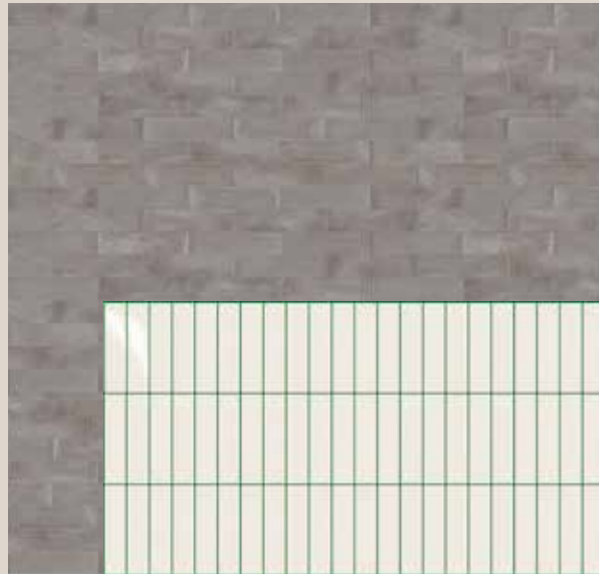


**Pavimento/floor:**

E638 Clk. Colors 20x20 (8"x8")  
E637 Clk. Decors 20x20 (8"x8")  
E633 Clk. White 20x20 (8"x8")  
E634 Clk. Silver 20x20 (8"x8")  
D836 Essences Extra Walnut Nat. Rett. 30x120 (12"x48")



pag. 16-17



**Rivestimento/Wall:**  
E631 Clk. Grey 7,5x30 (3"x12")

**Bancone/Counter:**  
0142 Ton. White 7,5x30 (3"x12")



**Pavimento/Floor:**  
E756 Clk. Grey Rmb 18,7x32,4cm (7<sup>3</sup>/<sub>8</sub>x12<sup>3</sup>/<sub>4</sub>) 50%  
E757 Clk. Dark Rmb 18,7x32,4cm (7<sup>3</sup>/<sub>8</sub>x12<sup>3</sup>/<sub>4</sub>) 50%



pag. 23



**Rivestimento/Wall:**  
E632 Clk. Dark 7,5x30 cm (3"x12")

**Bancone/Counter:**  
E754 Clk. White Rmb 18,7x32,4cm (7<sup>3</sup>/<sub>8</sub>x12<sup>3</sup>/<sub>4</sub>) 33,3%  
E755 Clk. Silver Rmb 18,7x32,4cm (7<sup>3</sup>/<sub>8</sub>x12<sup>3</sup>/<sub>4</sub>) 33,3%  
E756 Clk. Grey Rmb 18,7x32,4cm (7<sup>3</sup>/<sub>8</sub>x12<sup>3</sup>/<sub>4</sub>) 33,3%



**Pavimento/floor:**  
E754 Clk. White Rmb 18,7x32,4cm (7<sup>3</sup>/<sub>8</sub>x12<sup>3</sup>/<sub>4</sub>)



pag. 28-29



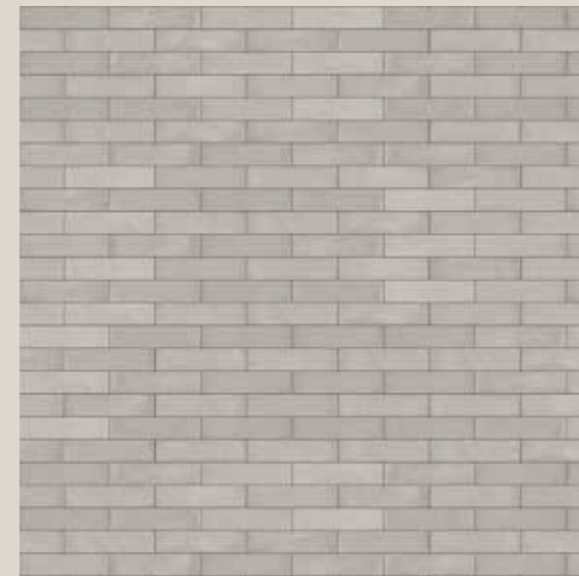
**Rivestimento/wall:**  
 E758 Clk. Colors Rmb. 18,7x32,4cm (7<sup>3</sup>/<sub>8</sub>x12<sup>3</sup>/<sub>4</sub>)  
 E756 Clk. Grey Rmb 18,7x32,4cm (7<sup>3</sup>/<sub>8</sub>x12<sup>3</sup>/<sub>4</sub>)



**Pavimento/Floor:**  
 E635 Clk. Grey 20x20 cm (8"x8")  
 D751 Street Light Nat. Rett. 75x150 (30"x60")



pag. 34-35



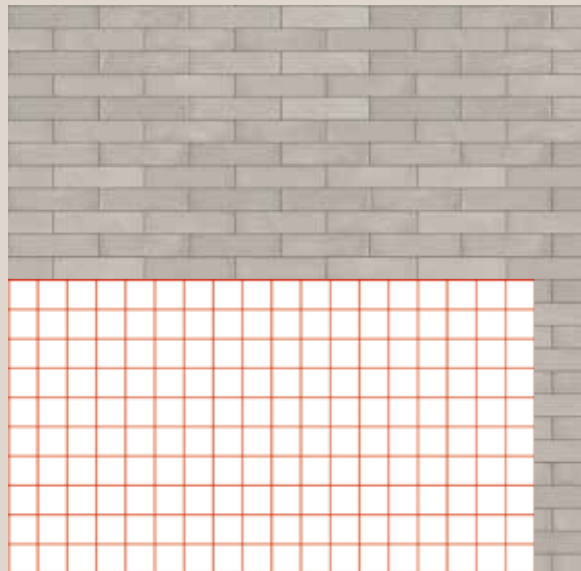
**Rivestimento/wall:**  
 E630 Clk. Silver 7,5x30 (3"x12")



**Pavimento/floor:**  
 E755 Clk. Silver Rmb 18,7x32,4cm (7<sup>3</sup>/<sub>8</sub>x12<sup>3</sup>/<sub>4</sub>) 10%  
 E756 Clk. Grey Rmb 18,7x32,4cm (7<sup>3</sup>/<sub>8</sub>x12<sup>3</sup>/<sub>4</sub>) 45%  
 E757 Clk. Dark Rmb 18,7x32,4cm (7<sup>3</sup>/<sub>8</sub>x12<sup>3</sup>/<sub>4</sub>) 45%



pag. 40-41



**Rivestimento/wall:**  
E630 Clk. Silver 7,5x30 (3"x12")

**Bancone/counter:**  
E620 Mai.Bianco 10x10 (4"x4")



**Pavimento/floor:**  
E754 Clk. White Rmb 18,7x32,4cm (7<sup>3</sup>/<sub>8</sub>x12<sup>3</sup>/<sub>4</sub>) 33,3%  
E756 Clk. Grey Rmb 18,7x32,4cm (7<sup>3</sup>/<sub>8</sub>x12<sup>3</sup>/<sub>4</sub>) 33,3%  
E757 Clk. Dark Rmb 18,7x32,4cm (7<sup>3</sup>/<sub>8</sub>x12<sup>3</sup>/<sub>4</sub>) 33,3%



pag. 47



**Rivestimento/wall:**  
E637 Clk. Decors 20x20 (8"x8")  
E634 Clk. Silver 20x20 (8"x8")



**Pavimento/floor:**  
E637 Clk. Decors 20x20 (8"x8")  
E634 Clk. Silver 20x20 (8"x8")



 **made**initaly  
SINCE 1974



credits

© Copyright 2017  
Ceramiche Marca Corona Spa

First Edition  
Printed in September 2017



CERAMICHE MARCA CORONA S.p.A.

Via Emilia Romagna, 7

41049 Sassuolo (Modena) Italia

Tel. +39 0536 867200

Fax +39 0536 867320-51

[info@marcacorona.it](mailto:info@marcacorona.it)

[www.marcacorona.it](http://www.marcacorona.it)