
Basalt

Porcelain Stone®



POWER PACK

JULY 2014

 CROSSVILLE®

Basalt

Porcelain Stone®

Product Overview

- Five distinct colors with the timeless look of volcanic rock
- Sizes offered 12 x 12 and 12 x 24
- Trim includes 4 x 12 single bullnose and 6 x 12 Cove base with a universal flat top
- Cross-Sheen® finish for easy cleaning
- Plank shapes are also available through Crossville's Get Planked® program, which offers a variety of plank sizes with no minimum order and a short lead time

Positioning Statement

Rock your spaces with the timeless look of volcanic stone. Basalt porcelain tile collection takes its cues from its natural namesake, featuring fine graining, authentic undertones, and the subtle look of crystallized magma for added sophistication. Available in two modular sizes and five earthen colors, the line offers a simple yet dramatic foundation for your rock star style.

The line's five colors – Silica, Caldera, Bedrock, Mafic and Magma are available in 12 x 12 and 12 x 24 sizes with coordinating 6 x 12 Cove Base and 4 x 12 Bullnose trim.

Basalt is made in the U.S.A. through Crossville's EcoCycle Tile Process™, it contains a minimum of 4% third-party certified recycled content and is Green Squared Certified. It's recommended for commercial and residential installations, including interior floors and walls and exterior vertical surfaces. Anywhere you want to add depth, character and rugged elegance to your design...Basalt.

Purchasing Information

Inventory Location and Availability – All Basalt tile is stocked in Crossville, Tennessee, and ready for immediate delivery. In the rare event Crossville® should temporarily run out of an item, we will replenish it as soon as possible. Pricing for Basalt has been posted on Crossville-Connections. Normal distributor discounts apply.

Social Media

Using Social Media will encourage distributor sales reps and their designers to learn more on Facebook. Important information may also be found on our Word Press blog, Elevate Your Space.

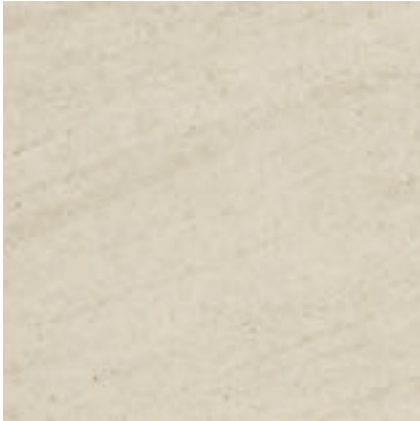


Style and Functionality

- Minimum 4% Pre-Consumer Recycled Content makes it one of Crossville's Beautifully Green Alternatives™
- Made in the U.S.A. • Cross-Sheen® Finish • Lifetime Residential Warranty
- Available with Hydrotect™, Crossville's revolutionary invisible coating



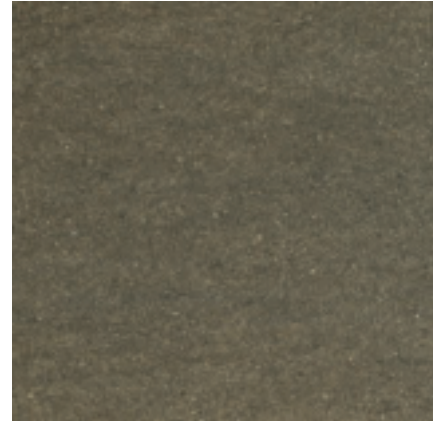
Available Colors



AV291 ▶ Silica



AV292 ▶ Caldera



AV294 ▶ Mafic



AV293 ▶ Bedrock



AV295 ▶ Magma

Sizes and Finishes

Field Tile (Available in all colors)

Nominal (in)	Actual (in)	Thickness (in)	Finish	Grout Joint (in)
12 x 12	11-13/16 x 11-13/16	3/8	UPS	3/16 – 1/4
12 x 24	11-13/16 x 23-13/16	3/8	UPS	3/16 – 1/4

Coordinating Trim (Available in all colors)

Nominal (in)	Actual (in)	Thickness (in)	Finish	Grout Joint (in)
6 x 12 Cove Base	5-7/8 x 11-3/4	3/8	UPS	3/16 – 1/4
4 x 12 Bullnose	3-3/4 x 11-3/4	3/8	UPS	3/16 – 1/4



4 x 12 Single Bullnose



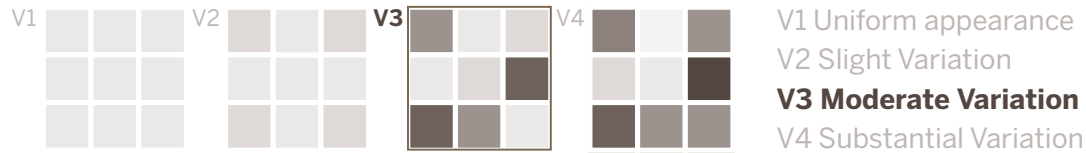
6 x 12 Cove Base (Universal, flat top)

Basalt

Porcelain Stone®

Shade & Texture Index

Basalt has a V3 Shade and Texture Index



V1 = Uniform Appearance	Differences among pieces from the same production run are minimal.
V2 = Slight Variation	Clearly distinguishable texture and/or pattern within similar colors.
V3 = Moderate Variation	While the colors present on a single piece of tile will be indicative of the colors to be expected on the other tiles, the amount of colors on each piece may vary significantly.
V4 = Substantial Variation	Random color differences from tile to tile, so one may have totally different colors from those on other tiles.

Product Performance

Breaking Strength	>500 lbf	ASTM C648
Bond Strength	>200psi	ASTM C482
Chemical Resistance	Unaffected	ASTM C650
Frost Resistance	Resistant	ASTM C1026
Water Absorption	<0.20%	ASTM C373
Scratch Hardness	7	Mohs Scale
Dynamic COF – UPS Wet	0.58 - 0.68	DCOF AcuTest™

Packaging Information

Type	Pc/Ctn	SF/Ctn	#Ctn	Ctn/Pkt	SF/Pkt
12 x 12	12	12	60.6	52	624.0
12 x 24	8	16	80.8	24	384.0
4 x 12 Bullnose	12		20.16	(Packaged individually by order)	
6 x 12 Cove Base	12		30.36	Sold by Cartons only	

Hydrotect™ Coating

Basalt is available with Hydrotect™. Crossville's revolutionary invisible coating harnesses the power of light, water and oxygen to create the best offense and defense against dirt, pollution and bacteria on any porcelain surface – walls or floors – indoors or outdoors. For complete details check our website at CrossvilleInc.com.



Product Information

CODE	COLOR NAME	SIZE
AV291.11212UPS	Silica	12 x 12
AV291.11224UPS	Silica	12 x 24
AV291.10412BNS	Silica	4 x 12 Bullnose
AV291.10612CBS	Silica	6 x 12 Covebase
AV292.11212UPS	Caldera	12 x 12
AV292.11224UPS	Caldera	12 x 24
AV292.10412BNS	Caldera	4 x 12 Bullnose
AV292.10612CBS	Caldera	6 x 12 Covebase
AV293.11212UPS	Bedrock	12 x 12
AV293.11224UPS	Bedrock	12 x 24
AV293.10412BNS	Bedrock	4 x 12 Bullnose
AV293.10612CBS	Bedrock	6 x 12 Covebase
AV294.11212UPS	Mafic	12 x 12
AV294.11224UPS	Mafic	12 x 24
AV294.10412BNS	Mafic	4 x 12 Bullnose
AV294.10612CBS	Mafic	6 x 12 Covebase
AV295.11212UPS	Magma	12 x 12
AV295.11224UPS	Magma	12 x 24
AV295.10412BNS	Magma	4 x 12 Bullnose
AV295.10612CBS	Magma	6 x 12 Covebase

Basalt

Porcelain Stone®

EcoCycle Tile Process™

Basalt contains a minimum of 4 percent pre-consumer recycled content and is manufactured by Crossville® using processes that have been certified by Scientific Certification Systems. SCS has verified that through these recycling processes Crossville recycles nearly 12 million pounds of previously discarded filtrate and fired tile waste. In addition to its own fired waste recycling, Crossville also accepts and recycles reclaimed, previously installed tile through its Tile Take-Back™ Program. For more information, visit CrossvilleInc.com/green.



Green Squared Certified

Crossville® has earned Green Squared™ certification from the Tile Council of North America (TCNA) for its entire U.S.-manufactured porcelain product line-up, as well as its manufacturing processes. The company is among the first ever recipients of this newly minted certification standard for the tile industry. TCNA developed the Green Squared certification under American National Standards Institute (ANSI) process. The multi-attribute program (ANSI A138.1) scores products in five categories of performance: product characteristics, manufacturing, corporate governance, innovation and end-of-life. Crossville's certified products and processes received stringent evaluation from Scientific Certification Systems (SCS), the green building industry's longest standing third-party certifier and the premium certification body for Green Squared.

Installation Procedures

- **Backing Material (Substrate):** The surface to be tiled must be clean, dry, flat and structurally sound (does not flex when weight is applied), secure, and free from any type of contamination that can act as a bond breaker or bond inhibitor. If there is any substance present that could inhibit the bond of the mortars used, it must be completely removed. Suitable substrates include, but are not limited to, exterior grade plywood, cement backer board, concrete, mortar beds, cement plaster, and existing ceramic tile/stone. Refer to industry information for a complete list of approved substrates. When using the double plywood or plywood/cement backer board scheme, check to ensure that the proper types and thickness of plywood are used.
- **Mortar:** Depending on the application and conditions present, the use of a liquid-latex fortified mortar or an epoxy mortar is also recommended for the installation of Porcelain Stone® tile. It can also be installed in mortar bed (i.e., thick bed) applications. Consult the installation materials' manufacturer for additional information and instructions. Ensure that adequate coverage of mortar is present under the tiles to provide proper bedding coverage and problem-free performance.
- **Grouting:** A polymer-modified, liquid-latex fortified or epoxy grout should be used with Porcelain Stone® tiles. While grout-staining problems are extremely rare when using Crossville® products, a small test patch is recommended when using a dark grout over a light-colored tile, or vice versa. The test patch will also verify clean ability of the grout with heavily textured tile surfaces.
- **Offset:** If offset pattern is required for tile 18 inches or longer, Crossville® recommends an offset of not greater than 33%.

Recommended Usage

Basalt is recommended for interior floors, walls, counter tops, and exterior walls in both residential and commercial applications. Basalt is not recommended for exterior horizontal surfaces or exterior paving. If offset pattern is required for tiles 18 inches or longer, Crossville® recommends an offset of not greater than 33%. See CrossvilleInc.com for detailed installation instructions.

Cleaning Procedures

Regular cleaning is the best way to keep Basalt tile looking good for years to come. Use clean, hot water (combined with a household cleaner for more aggressive cleaning). Rinse thoroughly and dry with a soft cloth. No waxes are needed. More information regarding the care and maintenance of Crossville® products is available at CrossvilleInc.com.

Crossville Sample Express

For samples of Basalt tile, simply call Crossville Sample Express. We can quickly deliver samples of Basalt tile directly to your location or to another address you specify. To reach the knowledgeable Sample Express team, call toll-free 800.221.9093.

Cross-Sheen® (UPS) Finish

Cross-Sheen® (UPS) finish imparts a subtle glow that enhances the color of the tile and also allows graffiti, stains and scuff marks to be easily wiped off the surface. This remarkable finish is on every tile Crossville® manufactures. Cross-Sheen is recommended for interior floors and walls and exterior walls, including high-traffic areas and areas where a low level of maintenance is desired.

Residential Lifetime Quality Warranty

For more information about the Crossville® warranty visit our website CrossvilleInc.com/design-resources/technical-material-safety-data-sheets/



Information listed here is subject to change. Please refer to CrossvilleInc.com for the latest and most accurate information