

---

Argent

---

Porcelain Stone®

# AMERICAN

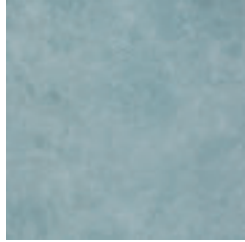
*Distinctly American. Uniquely Crossville.*



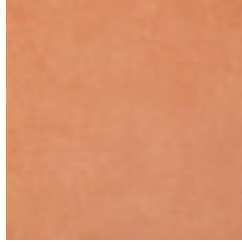
# Color Palette



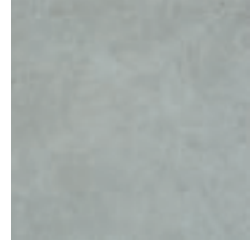
**A1401** ▶ Winter Garden



**A1413** ▶ Under the Sea



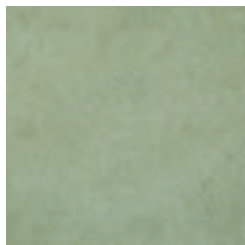
**A1410** ▶ Orange Crush



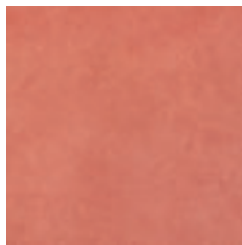
**A1417** ▶ Clean Slate



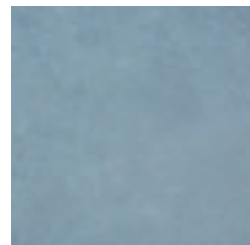
**A1402** ▶ Sacred Sand



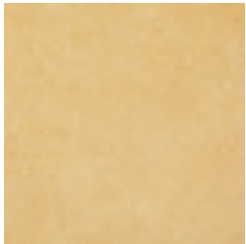
**A1405** ▶ Hollywood and Vine



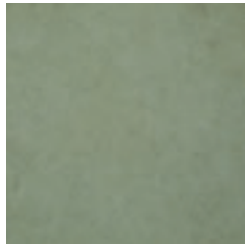
**A1411** ▶ Sunset Boulevard



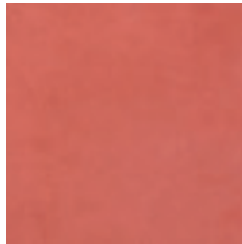
**A1414** ▶ Carnegie Cool



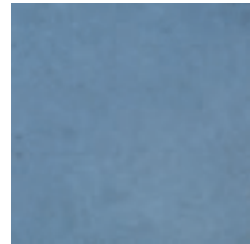
**A1409** ▶ Lemon Drop



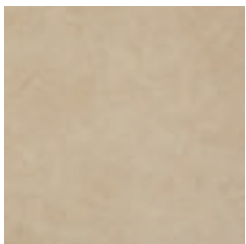
**A1406** ▶ Emerald City



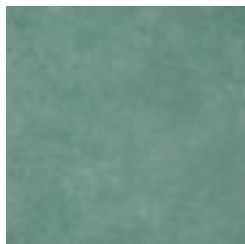
**A1412** ▶ Chicago Fire



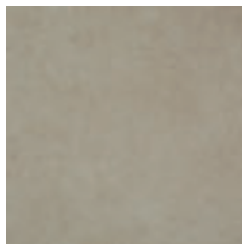
**A1415** ▶ Memphis Blues



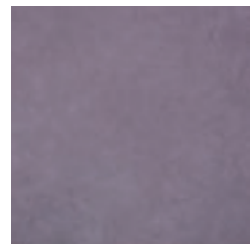
**A1403** ▶ No Reservations



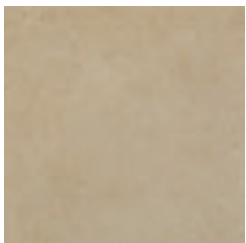
**A1407** ▶ Water Vapors



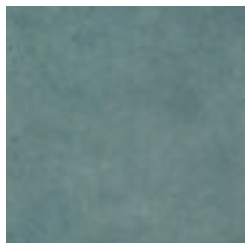
**A1418** ▶ Concrete Jungle



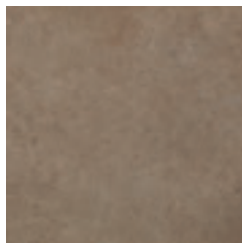
**A1416** ▶ Grapes of Wrath



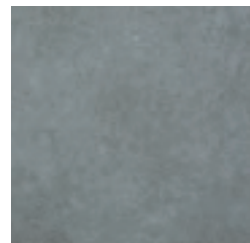
**A1404** ▶ Cowboy Up



**A1408** ▶ Glacier Lake



**A1419** ▶ Muddy Waters

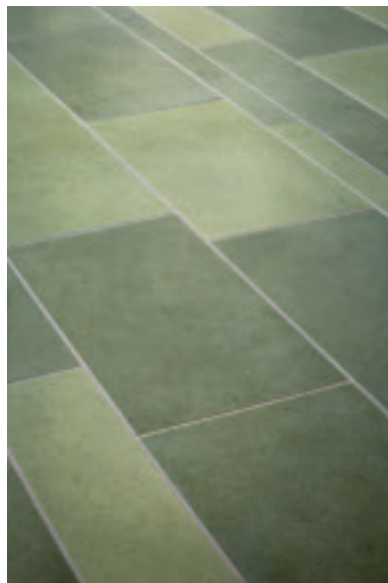
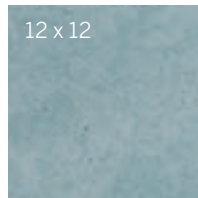


**A1420** ▶ On the Rocks

**A1409** ▶ Lemon Drop 6 x 24 UPS and **A1401** ▶ Winter Garden 12 x 24 UPS shown on cover

# Specifications

## Sizes UPS & HON Finish



**A1405** ▶ Hollywood and Vine 12 x 24, 6 x 24 and 3 x 24 UPS

**A1406** ▶ Emerald City 12 x 24, 6 x 24 and 3 x 24 UPS

## Sizes & Finishes

### Field Tile

Available in all colors

Nominal (in)	Actual (mm)	Thickness (mm)	Finish
6 x 6*	147 x 147	9.5	UPS
6 x 24*	147 x 602.5	9.5	UPS
12 x 24	299 x 602.5	9.5	UPS/HON

\*HON finish available through special order

Nominal (in)	Actual (in)	Thickness (mm)	Finish
12 x 12* †	11-13/16 x 11-13/16	9.5	UPS

\*HON finish available through special order

† Calibrated and measured in inches

Note: All field tile except 12 x 12† are rectified and modular with a 4.5mm grout joint. 12 x 12† is non-rectified, recommended grout joint of 3/16" to 1/4"

## Coordinating Trim

Nominal (in)	Actual (mm)	Thickness (mm)	Finish
6 x 12 Cove Base	147 x 299	9.5	UPS
4 x 12 Single Bullnose	96 x 299	9.5	UPS



6 x 12 Cove Base (Universal, flat top)  
(available only in A1401, A1402, A1403, A1404, A1417, A1418, A1419 and A1420)



4 x 12 Single Bullnose  
(available in all colors)

## Product Performance

Breaking Strength	>500 lbf	ASTM C648
Bond Strength	>200 psi	ASTM C482
Chemical Resistance	Unaffected	ASTM C650
Frost Resistance	Resistant	ASTM C1026
Water Absorption	<0.20%	ASTM C373
Scratch Hardness	7	Mohs Scale

## Wet Dynamic Coefficient of Friction Range

(wet slip potential)

UPS	0.50 - 0.60	AcuTest <sup>sm</sup>
HON	0.42 - 0.52	AcuTest <sup>sm</sup>

## Shade & Texture Index

Argent has a shade variation of V2.

V1



V2



V3



V4



V1 Uniform appearance

**V2 Slight Variation**

V3 Moderate Variation

V4 Substantial Variation

This porcelain tile product is produced with a V2 variation. Differences among pieces from the same production run are minimal. Inspect the product upon delivery and for best results, blend tile from several cartons during installation.

### Environmentally Conscious

Argent contains a minimum of 4 percent pre-consumer recycled content and is manufactured by Crossville® using processes that have been certified by Scientific Certification Systems. SCS has verified that through these recycling processes Crossville recycles nearly 12 million pounds of previously discarded filtrate and fired tile waste. In addition to its own fired waste recycling, Crossville also accepts and recycles reclaimed, previously installed tile through its Tile Take-Back™ Program. For more information, visit [CrossvilleInc.com/green](http://CrossvilleInc.com/green).

### Recommended Use

Argent is recommended for interior floors, walls, countertops, and exterior walls in both residential and commercial applications. Argent is not recommended for exterior horizontal surfaces or exterior paving. **The honed finish is not recommended for wet areas where standing water may occur.** If offset pattern is required for tiles 18 inches or longer, Crossville® recommends an offset of not greater than 33%. See [CrossvilleInc.com](http://CrossvilleInc.com) for detailed installation instructions.

### Care and Maintenance

Regular cleaning is the best way to keep Argent tile looking good for years to come. Use clean, hot water (combined with a household cleaner for more aggressive cleaning). Rinse thoroughly and dry with a soft cloth. No waxes are needed. More information regarding the care and maintenance of Crossville® products is available at [CrossvilleInc.com](http://CrossvilleInc.com).

### Our Warranty

Crossville Inc. guarantees that its products will meet or exceed the performance specifications outlined in ANSI A137.1-2008 and in the performance data section of the Crossville, Inc. general product catalog. For complete details check our website at [CrossvilleInc.com](http://CrossvilleInc.com).

*Information listed here is subject to change. Please refer to [CrossvilleInc.com](http://CrossvilleInc.com) for the latest, most accurate information.*

### Get Planked!

Our Porcelain Stone® products are available in popular plank shapes with no minimum order and quick fulfillment.

See website for more details and sizes.



A1418 ▶ Concrete Jungle 12 x 12 UPS  
A1416 ▶ Grapes of Wrath 12 x 12 UPS

### Trade Organizations



### Environmentally Aware



---

# Argent

---

## Porcelain Stone<sup>®</sup>

Bold. Bright.  
Colorfully Crossville.

Crossville's Argent line takes the rich look of argent stone, and amplifies it. Twelve saturated colors highlight deep visual texture, while eight neutrals provide the perfect contemporary backdrop for design. Reds, Greens, Blues and even Purple pop to make a bold statement with large rectilinear porcelain stone<sup>®</sup> tile. And Crossville's unique honing process provides even more depth and shine to Argent's unique look. Made in America, Argent turns heads with stunning style.

- Broad coordinating color palette provides dramatic design versatility
- Rectangular sizes are enhanced with Get Planked<sup>®</sup> options
- Honed colors available in stock as 12 x 24
- All sizes except 12 x 12<sup>†</sup> are **rectified** and modular with a 4.5 mm grout joint
- 12 x 12<sup>†</sup> is **non-rectified**, recommended grout joint of 3/16" to 1/4"

Argent is made in the U.S.A. through Crossville's EcoCycle Tile Process<sup>™</sup>, it contains a minimum of 4% third-party recycled content and is **Green Squared Certified**—a beautifully responsible selection for your next design project.

<sup>†</sup> Calibrated and measured in inches



**A1420** ▶ On the Rocks 12 x 24 UPS  
**A1417** ▶ Clean Slate 12 x 24 UPS  
**A1413** ▶ Under the Sea 6 x 24 UPS



---

# Argent

---

## Porcelain Stone®

**Crossville, Inc.**

PO Box 1168  
Crossville, TN  
38557

**Phone** 931.484.2110  
**Fax** 931.456.2956  
**E-Mail** [Crossc@CrossvilleInc.com](mailto:Crossc@CrossvilleInc.com)  
**Web** [CrossvilleInc.com](http://CrossvilleInc.com)



A1401 ▶ Winter Garden, 12 x 12 UPS  
A1410 ▶ Orange Crush, 6 x 6 UPS  
A1412 ▶ Chicago Fire, 12 x 12 UPS

 **CROSSVILLE**®